

# Bryoria carlottae

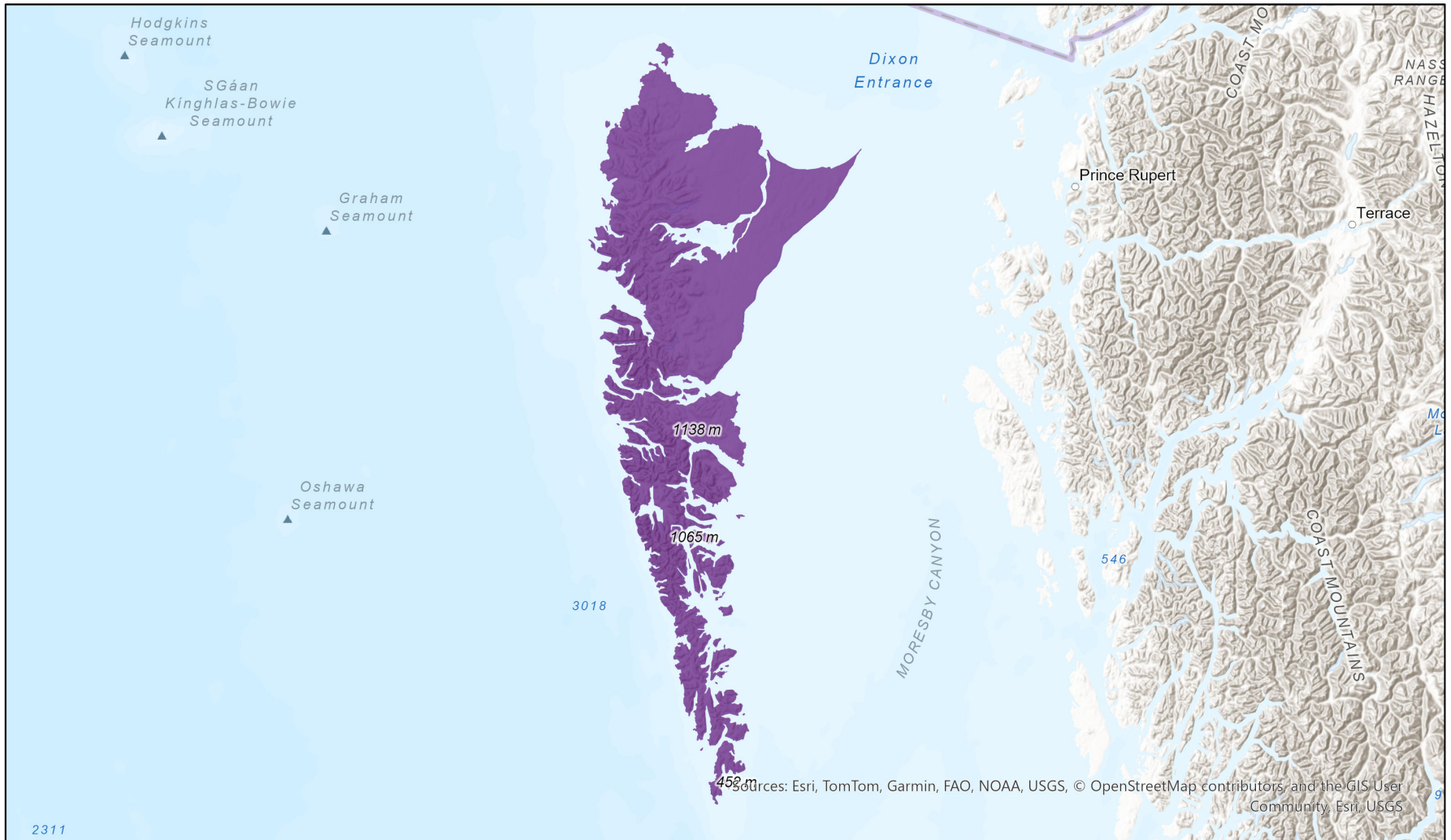


- Present
- Presence Expected
- Historical

## Ecosystem-based Automated Range (EBAR)

Date Generated: January 22, 2026; Version: 1.0; Stage: Expert Reviewed (National); Scope: Canadian

Synonyms Used: None



Input Records - 1 GBIF (1971); Expert Reviews - BC Experts

Map centre: 131.8092°W 53.1421°N  
© NatureServe Canada 2026 under CC BY 4.0

EBAR is relatively coarse scale data and not intended for all applications and analysis. Please see full disclaimer in metadata.

## Ecosystem-based Automated Range (EBAR) Metadata

---

### Species

National Scientific Name:	<i>Bryoria carlottae</i> Brodo & D. Hawksw.
Scientific Name Reference:	Esslinger, T. L. 2018. A cumulative checklist for the lichen-forming, lichenicolous and allied fungi of the continental United States and Canada, Version 22. <i>Opuscula Philolichenum</i> 17:6-268. [ <a href="http://sweetgum.nybg.org/philolichenum/">http://sweetgum.nybg.org/philolichenum/</a> ]
National English Name:	Languid Horsehair Lichen
National French Name:	Bryorie d'Haida Gwaii; Bryorie des îles de la Reine-Charlotte
Element National ID:	822708
Element Global ID:	123181 ( <a href="#">go to NatureServe Explorer</a> )
Element Code:	NLTEST5280
Endemism Type:	N
Canadian COSEWIC Name:	
Canadian COSEWIC ID:	
English COSEWIC Common Name:	
French COSEWIC Common Name:	

## Rank/Status

<b>Global Rank:</b>	G3 (reviewed October 23, 2025)
<b>National Rank (Canada):</b>	N2N3 (reviewed 2023)
<b>Subnational Ranks (Canada):</b>	BC=S2S3
<b>National Rank (United States):</b>	NNR
<b>Subnational Ranks (United States):</b>	None
<b>National Rank (Mexico):</b>	None
<b>Subnational Ranks (Mexico):</b>	None
<b>Canadian SARA Status:</b>	None
<b>Canadian COSEWIC Status:</b>	None
<b>US ESA Status:</b>	None

## Range Map

<b>Date Generated:</b>	January 22, 2026
<b>Version:</b>	1.0
<b>Stage:</b>	Expert Reviewed (National)
<b>Scope:</b>	Canadian
<b>Metadata:</b>	Primary Species - <i>Bryoria carlottae</i> Brodo & D. Hawksw. Input Records - 1 GBIF (1971); Expert Reviews - BC Experts
<b>Comments:</b>	None <a href="#">Please see spatial data for Ecoshape-level reviewer comments.</a>
<b>Disclaimer:</b>	Please review our <a href="#">methods document</a> before using EBAR.  EBAR range data are relatively coarse scale and appropriate for screening and education purposes, but are not intended for all types of applications and analysis.  The absence of data in any geographic areas does not necessarily mean that a species is not present.  An ecoshape with a presence value does not necessarily mean that a species is present throughout the entire geographic area.
<b>Presence Definitions:</b>	(Please see Comments above for any exceptions)  Present - the species is found within the ecoshape based on species observation data, Element Occurrences, Source Features, Canadian Federal Critical Habitat, or expert opinion.  Presence Expected - expert opinion the species may be present, or the ecoshape overlapped with a range estimate or a habitat suitability model.  Historical - all species occurrence data within the ecoshape contains observation data greater than 40 years old or an Element Occurrence (EO) that was ranked as Extirpated or Historical (EO Rank of H, H?, X or X?), or expert opinion that the species is extirpated or historical.
<b>Usage Type Definitions:</b>	(Please see Comments above for any exceptions)  Breeding - the species is thought to breed within the ecoshape based on eBird Breeding and Behaviour Codes or expert opinion.  Possible Breeding - the species is probably or possibly breeding within the ecoshape based on eBird, BBA or jurisdiction Breeding and Behaviour Codes, or on expert opinion.
<b>Map Projection:</b>	North America Albers Equal Area Conic (WKID 4269)

## Credits

<b>Suggested Citation:</b>	NatureServe Canada, 2026. Ecosystem-based Automated Range (EBAR) for Bryoria carlottae, Version 1.0, Expert Reviewed (National) (Canadian Scope). Ottawa, Canada. Retrieved from [insert url] on [insert date]
<b>License:</b>	Ecosystem-based Automated Range (EBAR) Project, Copyright NatureServe Canada 2026 under CC BY 4.0 ( <a href="https://creativecommons.org/licenses/by/4.0/">creativecommons.org/licenses/by/4.0/</a> )
<b>Project Website:</b>	<a href="http://www.natureserve.org/canada/ebar">www.natureserve.org/canada/ebar</a>
<b>Contact:</b>	<a href="mailto:ebar-kba@natureserve.ca">ebar-kba@natureserve.ca</a>
<b>Input References:</b>	GBIF - <a href="#">Global Biodiversity Information Facility</a>
<b>Reviewers by Taxa:</b>	<a href="#">Reviewers by Taxa</a>