

# *Polites sonora*

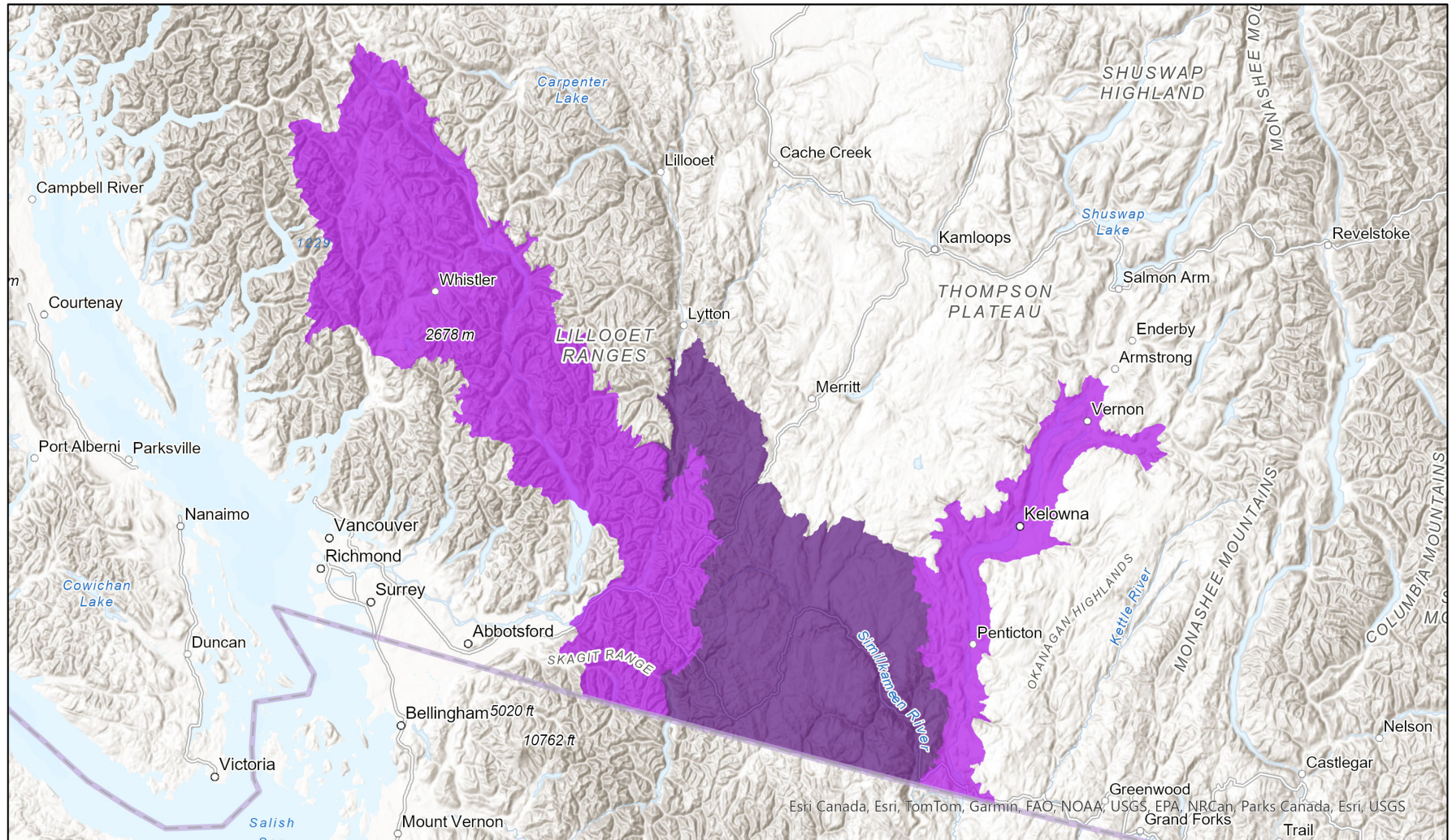


- Present
- Presence Expected
- Historical

## Ecosystem-based Automated Range (EBAR)

Date Generated: January 7, 2022; Version: 1.0; Stage: Expert Reviewed (National); Scope: Canadian

Synonyms Used: None



Input Records - 11 BC Non-sensitive Element Occurrences, 2 BC Survey Observations, 11 BISON, 7 Royal BC Museum; Expert Reviews - 1 Anonymous

Map centre: 121.2021°W 49.9648°N

© NatureServe Canada 2020 under CC BY 4.0

EBAR is relatively coarse scale data and not intended for all applications and analysis. Please see full disclaimer in metadata.

## Ecosystem-based Automated Range (EBAR) Metadata

---

### Species

National Scientific Name:	<i>Polites sonora</i> (Scudder, 1872)
Scientific Name Reference:	Pelham, J.P. 2021. Catalog of the butterflies of the United States and Canada. Revised 28 January 2021. <a href="http://butterfliesofamerica.com/US-Can-Cat.htm">http://butterfliesofamerica.com/US-Can-Cat.htm</a>
National English Name:	Sonoran Skipper
National French Name:	Hespérie du Sonora
Element National ID:	183096
Element Global ID:	118829 ( <a href="#">go to NatureServe Explorer</a> )
Element Code:	IILEP66090
Endemism Type:	N
Canadian COSEWIC Name:	
Canadian COSEWIC ID:	923

## Rank/Status

Global Rank:	G4 (reviewed December 16, 2020)
National Rank (Canada):	N3 (reviewed 2021)
Subnational Ranks (Canada):	BC=S3
National Rank (United States):	N4 (reviewed 1998)
Subnational Ranks (United States):	AZ=SNR, CA=SNR, CO=S4, ID=S4, MT=S4, NV=SNR, OR=SNR, UT=SNR, WA=S4, WY=SNR
National Rank (Mexico):	None
Subnational Ranks (Mexico):	None
Canadian SARA Status:	Special Concern/Préoccupante (December 13, 2007)
Canadian COSEWIC Status:	Not at Risk (November 27, 2016)
US ESA Status:	None

## Range Map

Date Generated:	January 07, 2022
Version:	1.0
Stage:	Expert Reviewed (National)
Scope:	Canadian
Metadata:	Primary Species Name - <i>Polites sonora</i> (Scudder, 1872) Input Records - 11 BC Non-sensitive Element Occurrences, 2 BC Survey Observations, 11 BISON, 7 Royal BC Museum; Expert Reviews - 1 Anonymous
Comments:	None <a href="#">Please see spatial data for Ecoshape-level reviewer comments.</a>
Disclaimer:	Please review our <a href="#">methods document</a> before using EBAR.  EBAR range data are relatively coarse scale and appropriate for screening and education purposes, but are not intended for all types of applications and analysis.  The absence of data in any geographic areas does not necessarily mean that a species is not present.  An ecoshape with a presence value does not necessarily mean that a species is present throughout the entire geographic area.
Presence Definitions:	(Please see Comments above for any exceptions)  Present - the species is found within the ecoshape based on species observation data, Element Occurrences, Source Features, Canadian Federal Critical Habitat, or expert opinion.  Presence Expected - expert opinion the species may be present, or the ecoshape overlapped with a range estimate or a habitat suitability model.  Historical - all species occurrence data within the ecoshape contains observation data greater than 40 years old or an Element Occurrence (EO) that was ranked as Extirpated or Historical (EO Rank of H, H?, X or X?).
Usage Type Definitions:	(Please see Comments above for any exceptions)  Breeding - the species is thought to breed within the ecoshape based on eBird Breeding and Behaviour Codes or expert opinion.  Possible Breeding - the species is probably or possibly breeding within the ecoshape based on eBird, BBA or jurisdiction Breeding and Behaviour Codes, or on expert opinion.
Map Projection:	North America Albers Equal Area Conic (WKID 4269)

## Credits

Suggested Citation:	NatureServe Canada, 2020. Ecosystem-based Automated Range (EBAR) for <i>Polites sonora</i> , Version 1.0, Expert Reviewed (National) (Canadian Scope). Ottawa, Canada. Retrieved from [insert url] on [insert date]
License:	Ecosystem-based Automated Range (EBAR) Project, Copyright NatureServe Canada 2022 under CC BY 4.0 ( <a href="https://creativecommons.org/licenses/by/4.0/">creativecommons.org/licenses/by/4.0/</a> )
Project Website:	<a href="http://www.natureserve.org/canada/ebar">www.natureserve.org/canada/ebar</a>
Contact:	<a href="mailto:ebbar-kba@natureserve.ca">ebbar-kba@natureserve.ca</a>
Input References:	BC Non-sensitive Element Occurrences - British Columbia Conservation Data Centre BC Survey Observations - British Columbia Conservation Data Centre BISON - <a href="https://www.usgs.gov/">United States Geological Survey</a> Royal British Columbia Museum - <a href="https://royalbcmuseum.bc.ca/">RBCM (https://royalbcmuseum.bc.ca/)</a>
Reviewers by Taxa:	<a href="#">Reviewers by Taxa</a>