

Polites sabuleti

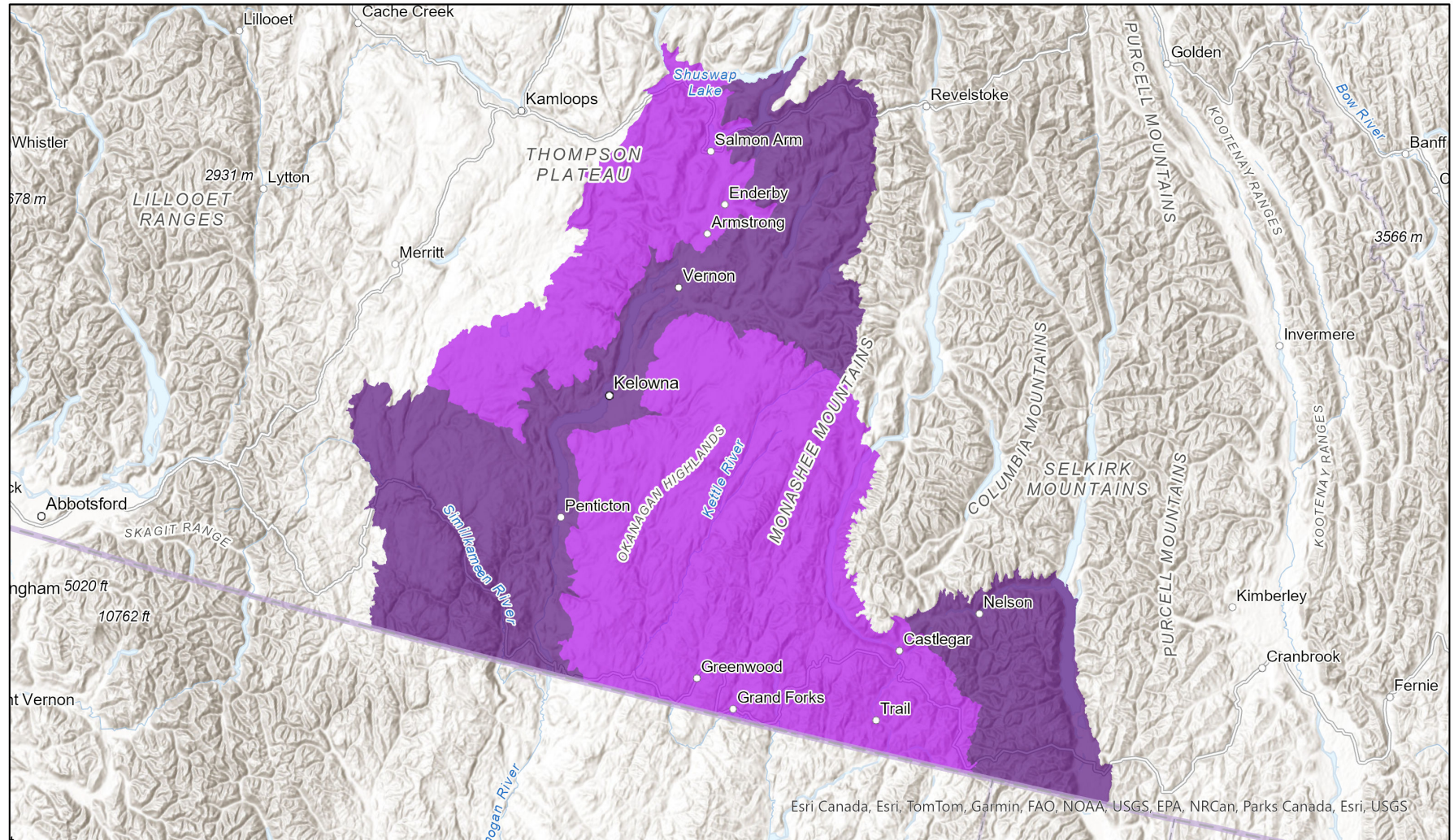


- Present
- Presence Expected
- Historical

Ecosystem-based Automated Range (EBAR)

Date Generated: August 21, 2023; Version: 1.0; Stage: Expert Reviewed (National); Scope: Canadian

Synonyms Used: None



0 40 80 km

Input Records - 1 BC Non-sensitive Element Occurrences, 8 BC Survey Observations, 53 GBIF, 7 iNaturalist.ca, 6 iNaturalist.org; Expert Reviews - BC Experts

Map centre: 118.8315° W 49.8904° N

© NatureServe Canada 2020 under CC BY 4.0

EBAR is relatively coarse scale data and not intended for all applications and analysis. Please see full disclaimer in metadata.

Ecosystem-based Automated Range (EBAR) Metadata

Species

National Scientific Name:	<i>Polites sabuleti</i> (Boisduval, 1852)
Scientific Name Reference:	Pelham, J.P. 2021. Catalog of the butterflies of the United States and Canada. Revised 28 January 2021. http://butterfliesofamerica.com/US-Can-Cat.htm
National English Name:	Sandhill Skipper
National French Name:	Hespérie des dunes
Element National ID:	184491
Element Global ID:	115997 (go to NatureServe Explorer)
Element Code:	IILEP66020
Endemism Type:	N
Canadian COSEWIC Name:	
Canadian COSEWIC ID:	

Rank/Status

Global Rank:	G4 (reviewed October 17, 2023)
National Rank (Canada):	N2 (reviewed 2022)
Subnational Ranks (Canada):	BC=S2
National Rank (United States):	N5 (reviewed 1998)
Subnational Ranks (United States):	AZ=SNR, CA=SNR, CO=S5, ID=S5, MT=SU, NE=SNR, NM=SNR, NV=SNR, OR=SNR, UT=SNR, WA=S3, WY=SNR
National Rank (Mexico):	None
Subnational Ranks (Mexico):	None
Canadian SARA Status:	None
Canadian COSEWIC Status:	None
US ESA Status:	UR

Range Map

Date Generated:	August 21, 2023
Version:	1.0
Stage:	Expert Reviewed (National)
Scope:	Canadian
Metadata:	Primary Species - <i>Polites sabuleti</i> (Boisduval, 1852) Input Records - 1 BC Non-sensitive Element Occurrences, 8 BC Survey Observations, 53 GBIF, 7 iNaturalist.ca, 6 iNaturalist.org; Expert Reviews - BC Experts
Comments:	None Please see spatial data for Ecoshape-level reviewer comments.
Disclaimer:	Please review our methods document before using EBAR. EBAR range data are relatively coarse scale and appropriate for screening and education purposes, but are not intended for all types of applications and analysis. The absence of data in any geographic areas does not necessarily mean that a species is not present. An ecoshape with a presence value does not necessarily mean that a species is present throughout the entire geographic area.
Presence Definitions:	(Please see Comments above for any exceptions) Present - the species is found within the ecoshape based on species observation data, Element Occurrences, Source Features, Canadian Federal Critical Habitat, or expert opinion. Presence Expected - expert opinion the species may be present, or the ecoshape overlapped with a range estimate or a habitat suitability model. Historical - all species occurrence data within the ecoshape contains observation data greater than 40 years old or an Element Occurrence (EO) that was ranked as Extirpated or Historical (EO Rank of H, H?, X or X?).
Usage Type Definitions:	(Please see Comments above for any exceptions) Breeding - the species is thought to breed within the ecoshape based on eBird Breeding and Behaviour Codes or expert opinion. Possible Breeding - the species is probably or possibly breeding within the ecoshape based on eBird, BBA or jurisdiction Breeding and Behaviour Codes, or on expert opinion.
Map Projection:	North America Albers Equal Area Conic (WKID 4269)

Credits

Suggested Citation:	NatureServe Canada, 2020. Ecosystem-based Automated Range (EBAR) for <i>Polites sabuleti</i> , Version 1.0, Expert Reviewed (National) (Canadian Scope). Ottawa, Canada. Retrieved from [insert url] on [insert date]
License:	Ecosystem-based Automated Range (EBAR) Project, Copyright NatureServe Canada 2022 under CC BY 4.0 (creativecommons.org/licenses/by/4.0/)
Project Website:	www.natureserve.org/canada/ebars
Contact:	ebars-kba@natureserve.ca
Input References:	BC Non-sensitive Element Occurrences - British Columbia Conservation Data Centre BC Survey Observations - British Columbia Conservation Data Centre GBIF - Global Biodiversity Information Facility iNaturalist.ca - California Academy of Sciences and the National Geographic Society iNaturalist.org - California Academy of Sciences and the National Geographic Society
Reviewers by Taxa:	Reviewers by Taxa