

## *Zaccoleus idahoensis*

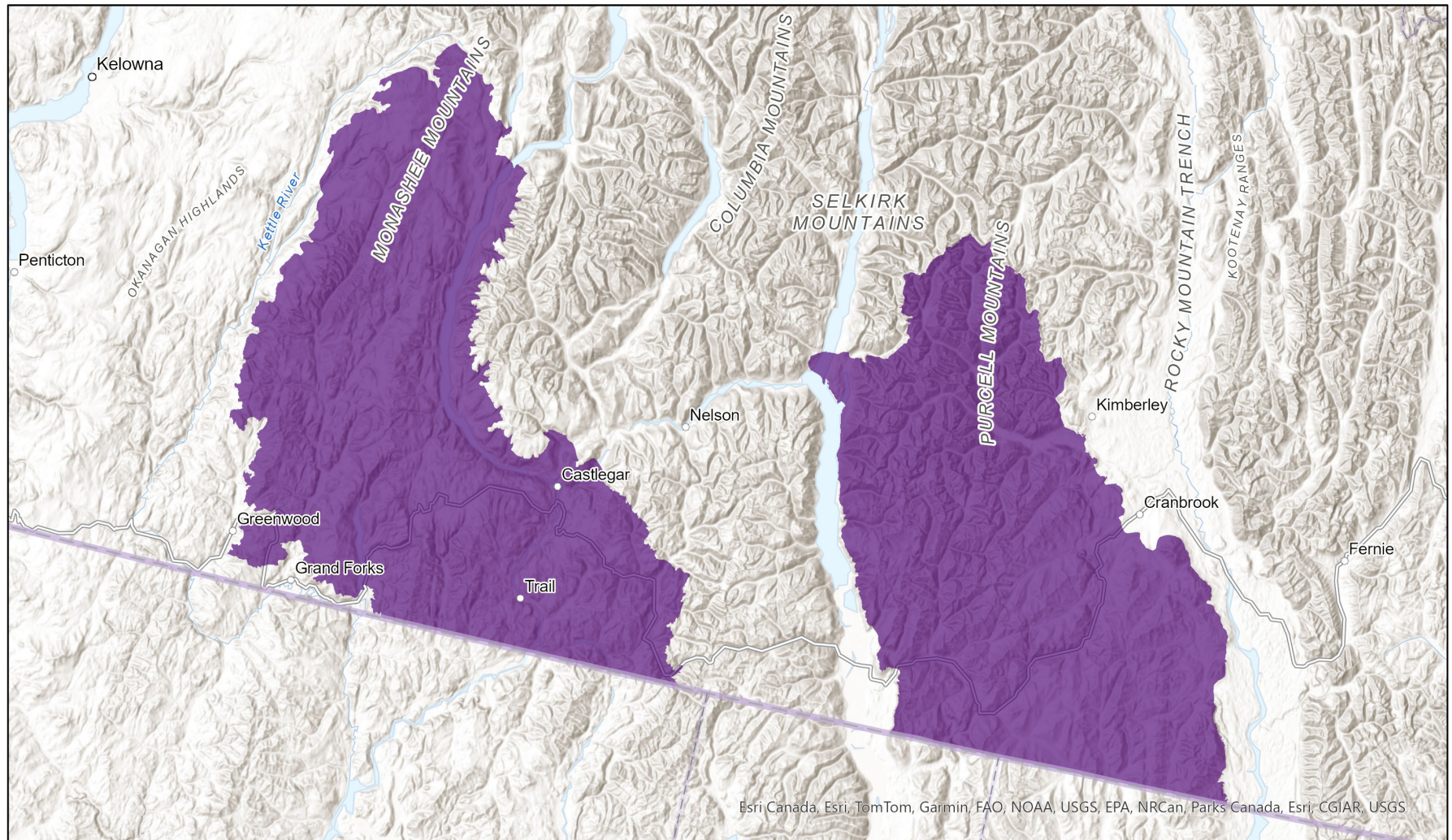
- Present
- Presence Expected
- Historical



### Ecosystem-based Automated Range (EBAR)

Date Generated: February 24, 2022; Version: 1.0; Stage: Expert Reviewed (National); Scope: Canadian

Synonyms Used: None



0 25 50 km

Input Records - 8 BC Non-sensitive Element Occurrences, 2 BC Survey Observations, 2 BISON, 2 GBIF; Expert Reviews - Annegret Nicolai

Map centre: 117.1619° W 49.5167° N

© NatureServe Canada 2020 under CC BY 4.0

EBAR is relatively coarse scale data and not intended for all applications and analysis. Please see full disclaimer in metadata.

## Ecosystem-based Automated Range (EBAR) Metadata

---

### Species

National Scientific Name:	<i>Zacoleus idahoensis</i> Pilsbry, 1903
Scientific Name Reference:	Turgeon, D. D., J. F. Quinn, Jr., A. E. Bogan, E. V. Coan, F. G. Hochberg, W. G. Lyons, P. M. Mikkelsen, R. J. Neves, C. F. E. Roper, G. Rosenberg, B. Roth, A. Scheltema, F. G. Thompson, M. Vecchione, and J. D. Williams. 1998. Common and scientific names of aquatic invertebrates from the United States and Canada: Mollusks. 2nd Edition. American Fisheries Society Special Publication 26, Bethesda, Maryland. 526 pp.
National English Name:	Sheathed Slug
National French Name:	Limace gainée
Element National ID:	836229
Element Global ID:	114211 ( <a href="#">go to NatureServe Explorer</a> )
Element Code:	IMGAS65010
Endemism Type:	N
Canadian COSEWIC Name:	
Canadian COSEWIC ID:	1313

## Rank/Status

Global Rank:	G3G4 (reviewed February 03, 2006)
National Rank (Canada):	N3? (reviewed 2022)
Subnational Ranks (Canada):	BC=S3?
National Rank (United States):	N3N4 (reviewed 2002)
Subnational Ranks (United States):	ID=S5, MT=S2S3, WA=SNR
National Rank (Mexico):	None
Subnational Ranks (Mexico):	None
Canadian SARA Status:	Special Concern/Préoccupante (February 25, 2019)
Canadian COSEWIC Status:	Special Concern (April 29, 2016)
US ESA Status:	None

## Range Map

Date Generated:	February 24, 2022
Version:	1.0
Stage:	Expert Reviewed (National)
Scope:	Canadian
Metadata:	Primary Species Name - <i>Zacoleus idahoensis</i> Pilsbry, 1903 Input Records - 8 BC Non-sensitive Element Occurrences, 2 BC Survey Observations, 2 BISON, 2 GBIF; Expert Reviews - Annegret Nicolai
Comments:	None <a href="#">Please see spatial data for Ecoshape-level reviewer comments.</a>
Disclaimer:	Please review our <a href="#">methods document</a> before using EBAR.  EBAR range data are relatively coarse scale and appropriate for screening and education purposes, but are not intended for all types of applications and analysis.  The absence of data in any geographic areas does not necessarily mean that a species is not present.  An ecoshape with a presence value does not necessarily mean that a species is present throughout the entire geographic area.
Presence Definitions:	(Please see Comments above for any exceptions)  Present - the species is found within the ecoshape based on species observation data, Element Occurrences, Source Features, Canadian Federal Critical Habitat, or expert opinion.  Presence Expected - expert opinion the species may be present, or the ecoshape overlapped with a range estimate or a habitat suitability model.  Historical - all species occurrence data within the ecoshape contains observation data greater than 40 years old or an Element Occurrence (EO) that was ranked as Extirpated or Historical (EO Rank of H, H?, X or X?).
Usage Type Definitions:	(Please see Comments above for any exceptions)  Breeding - the species is thought to breed within the ecoshape based on eBird Breeding and Behaviour Codes or expert opinion.  Possible Breeding - the species is probably or possibly breeding within the ecoshape based on eBird, BBA or jurisdiction Breeding and Behaviour Codes, or on expert opinion.
Map Projection:	North America Albers Equal Area Conic (WKID 4269)



## Credits

Suggested Citation:	NatureServe Canada, 2020. Ecosystem-based Automated Range (EBAR) for <i>Zacoleus idahoensis</i> , Version 1.0, Expert Reviewed (National) (Canadian Scope). Ottawa, Canada. Retrieved from [insert url] on [insert date]
License:	Ecosystem-based Automated Range (EBAR) Project, Copyright NatureServe Canada 2022 under CC BY 4.0 ( <a href="https://creativecommons.org/licenses/by/4.0/">creativecommons.org/licenses/by/4.0/</a> )
Project Website:	<a href="http://www.natureserve.org/canada/ebar">www.natureserve.org/canada/ebar</a>
Contact:	<a href="mailto:ebbar-kba@natureserve.ca">ebbar-kba@natureserve.ca</a>
Input References:	BC Non-sensitive Element Occurrences - British Columbia Conservation Data Centre BC Survey Observations - British Columbia Conservation Data Centre BISON - <a href="#">United States Geological Survey</a> GBIF - <a href="#">Global Biodiversity Information Facility</a>
Reviewers by Taxa:	<a href="#">Reviewers by Taxa</a>