

# *Litaneutria minor*

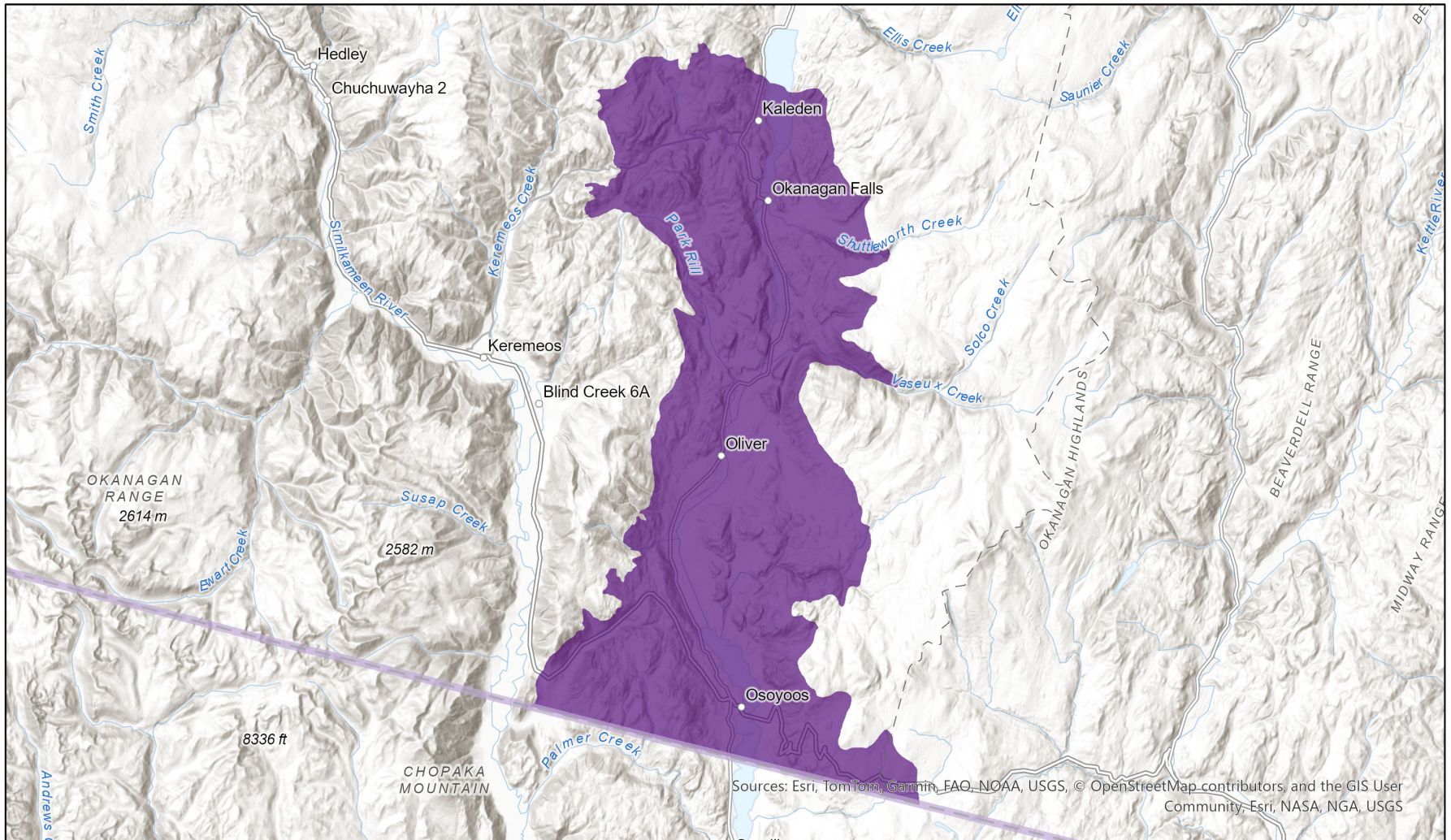


- Present
- Presence Expected
- Historical

## Ecosystem-based Automated Range (EBAR)

Date Generated: February 9, 2026; Version: 1.0; Stage: Expert Reviewed (National); Scope: Canadian

Synonyms Used: None



Input Records - 1 GBIF (1974); Expert Reviews - Joel Gibson

Map centre: 119.5548° W 49.2024° N  
© NatureServe Canada 2026 under CC BY 4.0

EBAR is relatively coarse scale data and not intended for all applications and analysis. Please see full disclaimer in metadata.

## Ecosystem-based Automated Range (EBAR) Metadata

---

### Species

National Scientific Name:	<i>Litaneutria minor</i> (Scudder, 1872)
Scientific Name Reference:	Anderson, K. 2018. Praying Mantises of the United States and Canada. Independently published. 291 pp.
National English Name:	Agile Ground Mantis
National French Name:	Mante agile
Element National ID:	1100021
Element Global ID:	1100020 ( <a href="#">go to NatureServe Explorer</a> )
Element Code:	IIMAN03010
Endemism Type:	N
Canadian COSEWIC Name:	
Canadian COSEWIC ID:	
English COSEWIC Common Name:	
French COSEWIC Common Name:	

## Rank/Status

Global Rank:	GNR
National Rank (Canada):	N1N2 (reviewed 2022)
Subnational Ranks (Canada):	BC=S1S2
National Rank (United States):	NNR
Subnational Ranks (United States):	MT=SNR, WY=SNR
National Rank (Mexico):	None
Subnational Ranks (Mexico):	None
Canadian SARA Status:	None
Canadian COSEWIC Status:	None
US ESA Status:	None

## Range Map

<b>Date Generated:</b>	February 09, 2026
<b>Version:</b>	1.0
<b>Stage:</b>	Expert Reviewed (National)
<b>Scope:</b>	Canadian
<b>Metadata:</b>	Primary Species - <i>Litaneutria minor</i> (Scudder, 1872) Input Records - 1 GBIF (1974); Expert Reviews - Joel Gibson
<b>Comments:</b>	None <a href="#">Please see spatial data for Ecoshape-level reviewer comments.</a>
<b>Disclaimer:</b>	Please review our <a href="#">methods document</a> before using EBAR.  EBAR range data are relatively coarse scale and appropriate for screening and education purposes, but are not intended for all types of applications and analysis.  The absence of data in any geographic areas does not necessarily mean that a species is not present.  An ecoshape with a presence value does not necessarily mean that a species is present throughout the entire geographic area.
<b>Presence Definitions:</b>	(Please see Comments above for any exceptions)  Present - the species is found within the ecoshape based on species observation data, Element Occurrences, Source Features, Canadian Federal Critical Habitat, or expert opinion.  Presence Expected - expert opinion the species may be present, or the ecoshape overlapped with a range estimate or a habitat suitability model.  Historical - all species occurrence data within the ecoshape contains observation data greater than 40 years old or an Element Occurrence (EO) that was ranked as Extirpated or Historical (EO Rank of H, H?, X or X?), or expert opinion that the species is extirpated or historical.
<b>Usage Type Definitions:</b>	(Please see Comments above for any exceptions)  Breeding - the species is thought to breed within the ecoshape based on eBird Breeding and Behaviour Codes or expert opinion.  Possible Breeding - the species is probably or possibly breeding within the ecoshape based on eBird, BBA or jurisdiction Breeding and Behaviour Codes, or on expert opinion.
<b>Map Projection:</b>	North America Albers Equal Area Conic (WKID 4269)

## Credits

<b>Suggested Citation:</b>	NatureServe Canada, 2026. Ecosystem-based Automated Range (EBAR) for <i>Litaneutria minor</i> , Version 1.0, Expert Reviewed (National) (Canadian Scope). Ottawa, Canada. Retrieved from [insert url] on [insert date]
<b>License:</b>	Ecosystem-based Automated Range (EBAR) Project, Copyright NatureServe Canada 2026 under CC BY 4.0 ( <a href="https://creativecommons.org/licenses/by/4.0/">creativecommons.org/licenses/by/4.0/</a> )
<b>Project Website:</b>	<a href="http://www.natureserve.org/canada/ebar">www.natureserve.org/canada/ebar</a>
<b>Contact:</b>	<a href="mailto:ebar-kba@natureserve.ca">ebar-kba@natureserve.ca</a>
<b>Input References:</b>	GBIF - <a href="#">Global Biodiversity Information Facility</a>
<b>Reviewers by Taxa:</b>	<a href="#">Reviewers by Taxa</a>