

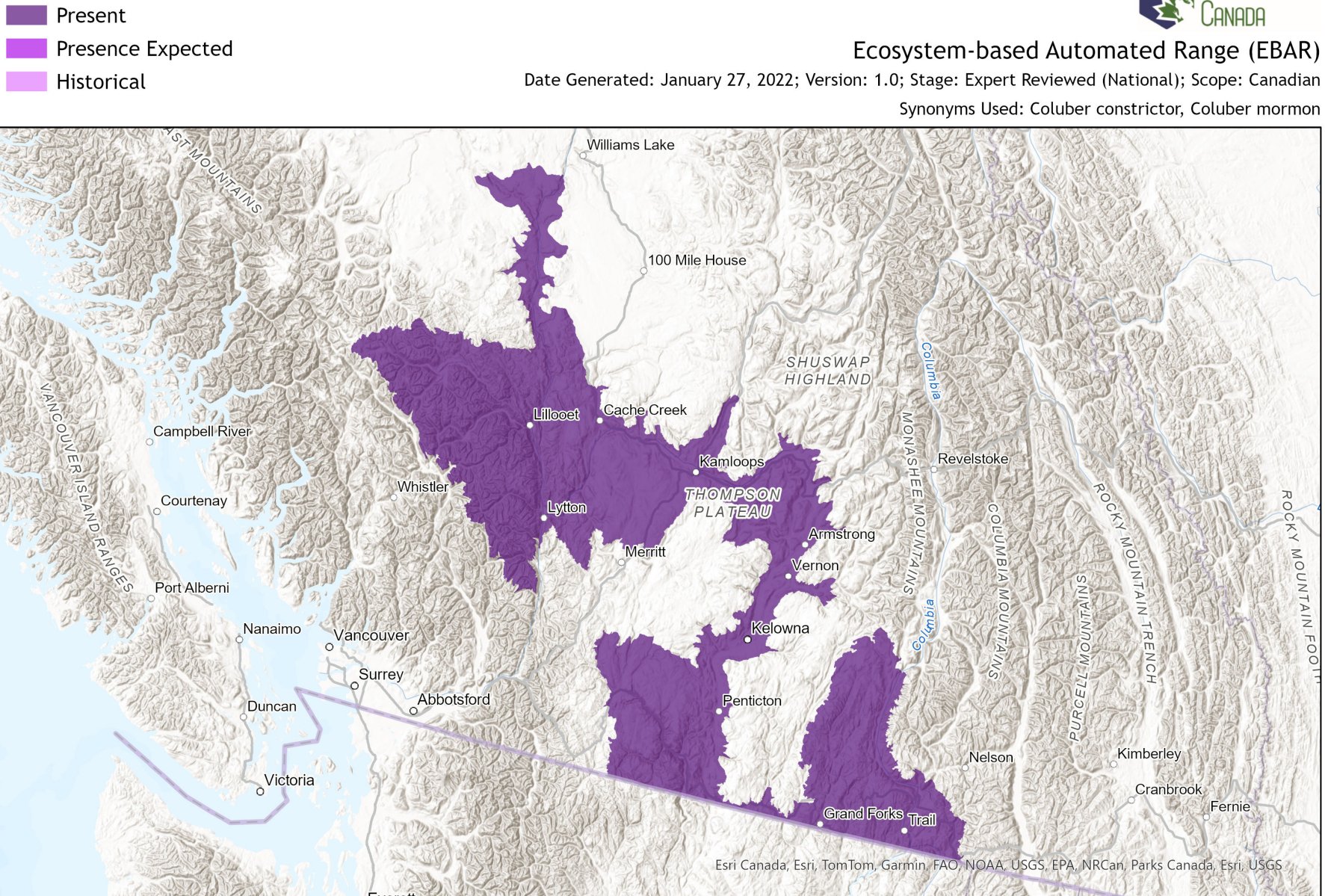
# Coluber constrictor mormon



## Ecosystem-based Automated Range (EBAR)

Date Generated: January 27, 2022; Version: 1.0; Stage: Expert Reviewed (National); Scope: Canadian

Synonyms Used: Coluber constrictor, Coluber mormon



0 70 140 km  
 Map centre: 120.5739° W 50.417° N  
 © NatureServe Canada 2020 under CC BY 4.0  
 EBAR is relatively coarse scale data and not intended for all applications and analysis. Please see full disclaimer in metadata.

Input Records - 906 BC Incidental Observations, 46 BC Non-sensitive Element Occurrences, 910 BC Secured Incidental Observations, 891 BC Secured Survey Observations, 159 BC Secured Telemetry Observations, 42 BC Sensitive Element Occurrences, 142 BC Survey Observations, 47 BISON, 97 GBIF, 95 iNaturalist.ca, 13 VertNet; Expert Reviews - 1 Anonymous

## Ecosystem-based Automated Range (EBAR) Metadata

---

### Species

National Scientific Name:	<i>Coluber constrictor mormon</i> (Baird and Girard, 1852)
Scientific Name Reference:	Crother, B. I. (editor). 2017. Scientific and standard English names of amphibians and reptiles of North America north of Mexico, with comments regarding confidence in our understanding. 8th edition. SSAR Herpetological Circular 43:1-104. [Updates in SSAR North American Species Names Database at: <a href="https://ssarherps.org/cndb">https://ssarherps.org/cndb</a> ]
National English Name:	Western Yellow-bellied Racer
National French Name:	Couleuvre agile de l'Ouest; Couleuvre agile à ventre jaune de l'Ouest
Element National ID:	162247
Element Global ID:	105783 ( <a href="#">go to NatureServe Explorer</a> )
Element Code:	ARADB0701C
Endemism Type:	N
Canadian COSEWIC Name:	
Canadian COSEWIC ID:	383

## Rank/Status

Global Rank:	G5T5 (reviewed February 02, 2016)
National Rank (Canada):	N2N3 (reviewed 2023)
Subnational Ranks (Canada):	BC=S2S3
National Rank (United States):	N5 (reviewed 1996)
Subnational Ranks (United States):	AZ=S1, CO=S3, NV=S5, TX=S1
National Rank (Mexico):	None
Subnational Ranks (Mexico):	None
Canadian SARA Status:	Threatened/Menacée (August 15, 2006)
Canadian COSEWIC Status:	Threatened (November 26, 2015)
US ESA Status:	None



## Range Map

Date Generated:	January 27, 2022
Version:	1.0
Stage:	Expert Reviewed (National)
Scope:	Canadian
Metadata:	<p>Primary Species Name - <i>Coluber constrictor mormon</i> (Baird and Girard, 1852); Synonyms - <i>Coluber constrictor</i> Linnaeus, 1758, <i>Coluber mormon</i></p> <p>Input Records - 906 BC Incidental Observations, 46 BC Non-sensitive Element Occurrences, 910 BC Secured Incidental Observations, 891 BC Secured Survey Observations, 159 BC Secured Telemetry Observations, 42 BC Sensitive Element Occurrences, 142 BC Survey Observations, 47 BISON, 97 GBIF, 95 iNaturalist.ca, 13 VertNet; Expert Reviews - 1 Anonymous</p>
Comments:	<p>None</p> <p><a href="#">Please see spatial data for Ecoshape-level reviewer comments.</a></p>
Disclaimer:	<p>Please review our <a href="#">methods document</a> before using EBAR.</p> <p>EBAR range data are relatively coarse scale and appropriate for screening and education purposes, but are not intended for all types of applications and analysis.</p> <p>The absence of data in any geographic areas does not necessarily mean that a species is not present.</p> <p>An ecoshape with a presence value does not necessarily mean that a species is present throughout the entire geographic area.</p>
Presence Definitions:	<p>(Please see Comments above for any exceptions)</p> <p>Present - the species is found within the ecoshape based on species observation data, Element Occurrences, Source Features, Canadian Federal Critical Habitat, or expert opinion.</p> <p>Presence Expected - expert opinion the species may be present, or the ecoshape overlapped with a range estimate or a habitat suitability model.</p> <p>Historical - all species occurrence data within the ecoshape contains observation data greater than 40 years old or an Element Occurrence (EO) that was ranked as Extirpated or Historical (EO Rank of H, H?, X or X?).</p>
Usage Type Definitions:	<p>(Please see Comments above for any exceptions)</p> <p>Breeding - the species is thought to breed within the ecoshape based on eBird Breeding and Behaviour Codes or expert opinion.</p> <p>Possible Breeding - the species is probably or possibly breeding within the ecoshape based on eBird, BBA or jurisdiction Breeding and Behaviour Codes, or on expert opinion.</p>
Map Projection:	North America Albers Equal Area Conic (WKID 4269)

## Credits

**Suggested Citation:**

NatureServe Canada, 2020. Ecosystem-based Automated Range (EBAR) for Coluber constrictor mormon, Version 1.0, Expert Reviewed (National) (Canadian Scope). Ottawa, Canada. Retrieved from [insert url] on [insert date]

**License:**

Ecosystem-based Automated Range (EBAR) Project, Copyright NatureServe Canada 2022 under CC BY 4.0 ([creativecommons.org/licenses/by/4.0/](https://creativecommons.org/licenses/by/4.0/))

**Project Website:**

[www.natureserve.org/canada/ebars](http://www.natureserve.org/canada/ebars)

**Contact:**

[ebars-kba@natureserve.ca](mailto:ebars-kba@natureserve.ca)

**Input References:**

BC Non-sensitive Element Occurrences - British Columbia Conservation Data Centre

BC Secured Survey Observations - British Columbia Conservation Data Centre

BC Secured Telemetry Observations - British Columbia Conservation Data Centre

BC Sensitive Element Occurrences - British Columbia Conservation Data Centre

BC Survey Observations - British Columbia Conservation Data Centre

BC UNVETTED Incidental Observations - British Columbia Conservation Data Centre

BC UNVETTED Secured Incidental Observations - British Columbia Conservation Data Centre

BISON - [United States Geological Survey](#)

GBIF - [Global Biodiversity Information Facility](#)

iNaturalist.ca (original coordinates for obscured records) - [California Academy of Sciences and the National Geographic Society](#)

VertNet - [National Science Foundation](#)

**Reviewers by Taxa:**

[Reviewers by Taxa](#)