

# *Elgaria coerulea*

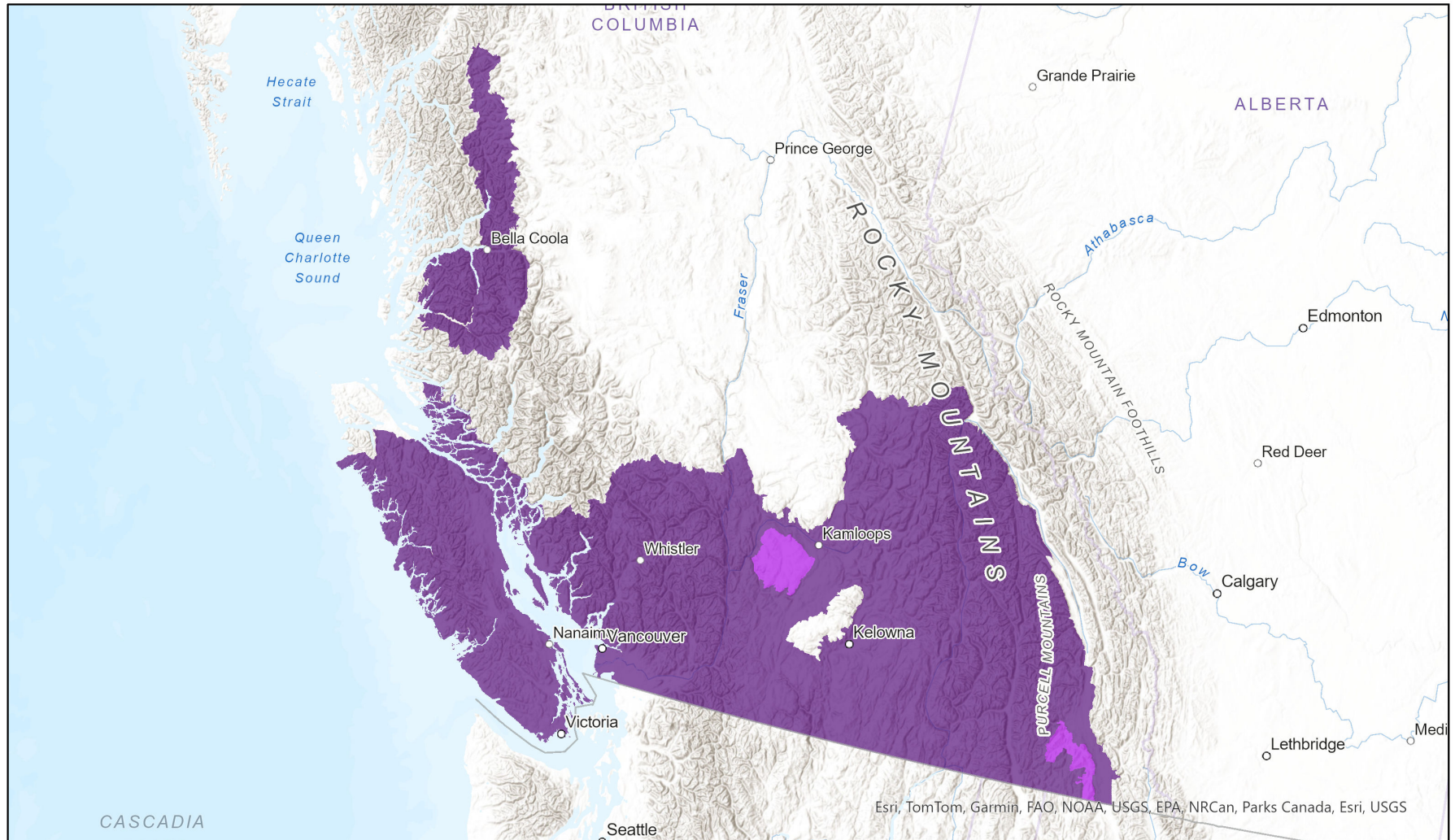


- Present
- Presence Expected
- Historical

## Ecosystem-based Automated Range (EBAR)

Date Generated: June 4, 2024; Version: 1.0; Stage: Expert Reviewed (National); Scope: Canadian

Synonyms Used: None



0 130 260 km

Input Records - 1672 BC Survey Observations, 1945 GBIF, 1487 iNaturalist.ca, 266 iNaturalist.ca (original coordinates for obscured records), 1294 iNaturalist.org; Expert Reviews - BC Experts

Map centre: 122.2224° W 51.5139° N  
© NatureServe Canada 2020 under CC BY 4.0

EBAR is relatively coarse scale data and not intended for all applications and analysis. Please see full disclaimer in metadata.

## Ecosystem-based Automated Range (EBAR) Metadata

---

### Species

National Scientific Name:	<i>Elgaria coerulea</i> (Wiegmann, 1828)
Scientific Name Reference:	Crother, B. I. (editor). 2017. Scientific and standard English names of amphibians and reptiles of North America north of Mexico, with comments regarding confidence in our understanding. 8th edition. SSAR Herpetological Circular 43:1-104. [Updates in SSAR North American Species Names Database at: <a href="https://ssarherps.org/cndb">https://ssarherps.org/cndb</a> ]
National English Name:	Northern Alligator Lizard
National French Name:	Lézard alligator boréal; Lézard alligator du Nord
Element National ID:	161943
Element Global ID:	105055 ( <a href="#">go to NatureServe Explorer</a> )
Element Code:	ARACB01010
Endemism Type:	N
Canadian COSEWIC Name:	
Canadian COSEWIC ID:	711

## Rank/Status

<b>Global Rank:</b>	G5 (reviewed February 02, 2016)
<b>National Rank (Canada):</b>	N4 (reviewed 2016)
<b>Subnational Ranks (Canada):</b>	BC=S4
<b>National Rank (United States):</b>	N5 (reviewed 1996)
<b>Subnational Ranks (United States):</b>	CA=SNR, ID=S4, MT=S3, NV=S2S3, OR=S5, UT=SNR, WA=S5
<b>National Rank (Mexico):</b>	None
<b>Subnational Ranks (Mexico):</b>	None
<b>Canadian SARA Status:</b>	None
<b>Canadian COSEWIC Status:</b>	Not at Risk (May 01, 2002)
<b>US ESA Status:</b>	None

## Range Map

<b>Date Generated:</b>	June 04, 2024
<b>Version:</b>	1.0
<b>Stage:</b>	Expert Reviewed (National)
<b>Scope:</b>	Canadian
<b>Metadata:</b>	Primary Species - <i>Elgaria coerulea</i> (Wiegmann, 1828); Secondary Species - <i>Elgaria coerulea principis</i> Baird and Girard, 1852 Input Records - 1672 BC Survey Observations, 1945 GBIF, 1487 iNaturalist.ca, 266 iNaturalist.ca (original coordinates for obscured records), 1294 iNaturalist.org; Expert Reviews - BC Experts
<b>Comments:</b>	None <a href="#">Please see spatial data for Ecoshape-level reviewer comments.</a>
<b>Disclaimer:</b>	Please review our <a href="#">methods document</a> before using EBAR.  EBAR range data are relatively coarse scale and appropriate for screening and education purposes, but are not intended for all types of applications and analysis.  The absence of data in any geographic areas does not necessarily mean that a species is not present.  An ecoshape with a presence value does not necessarily mean that a species is present throughout the entire geographic area.
<b>Presence Definitions:</b>	(Please see Comments above for any exceptions)  Present - the species is found within the ecoshape based on species observation data, Element Occurrences, Source Features, Canadian Federal Critical Habitat, or expert opinion.  Presence Expected - expert opinion the species may be present, or the ecoshape overlapped with a range estimate or a habitat suitability model.  Historical - all species occurrence data within the ecoshape contains observation data greater than 40 years old or an Element Occurrence (EO) that was ranked as Extirpated or Historical (EO Rank of H, H?, X or X?), or expert opinion that the species is extirpated or historical.
<b>Usage Type Definitions:</b>	(Please see Comments above for any exceptions)  Breeding - the species is thought to breed within the ecoshape based on eBird Breeding and Behaviour Codes or expert opinion.  Possible Breeding - the species is probably or possibly breeding within the ecoshape based on eBird, BBA or jurisdiction Breeding and Behaviour Codes, or on expert opinion.
<b>Map Projection:</b>	North America Albers Equal Area Conic (WKID 4269)

## Credits

<b>Suggested Citation:</b>	NatureServe Canada, 2020. Ecosystem-based Automated Range (EBAR) for <i>Elgaria coerulea</i> , Version 1.0, Expert Reviewed (National) (Canadian Scope). Ottawa, Canada. Retrieved from [insert url] on [insert date]
<b>License:</b>	Ecosystem-based Automated Range (EBAR) Project, Copyright NatureServe Canada 2022 under CC BY 4.0 ( <a href="https://creativecommons.org/licenses/by/4.0/">creativecommons.org/licenses/by/4.0/</a> )
<b>Project Website:</b>	<a href="http://www.natureserve.org/canada/ebar">www.natureserve.org/canada/ebar</a>
<b>Contact:</b>	<a href="mailto:ebar-kba@natureserve.ca">ebar-kba@natureserve.ca</a>
<b>Input References:</b>	BC Survey Observations - British Columbia Conservation Data Centre GBIF - <a href="#">Global Biodiversity Information Facility</a> iNaturalist.ca - <a href="#">California Academy of Sciences and the National Geographic Society</a> iNaturalist.ca (original coordinates for obscured records) - <a href="#">California Academy of Sciences and the National Geographic Society</a> iNaturalist.org - <a href="#">California Academy of Sciences and the National Geographic Society</a>
<b>Reviewers by Taxa:</b>	<a href="#">Reviewers by Taxa</a>