

# *Euderma maculatum*

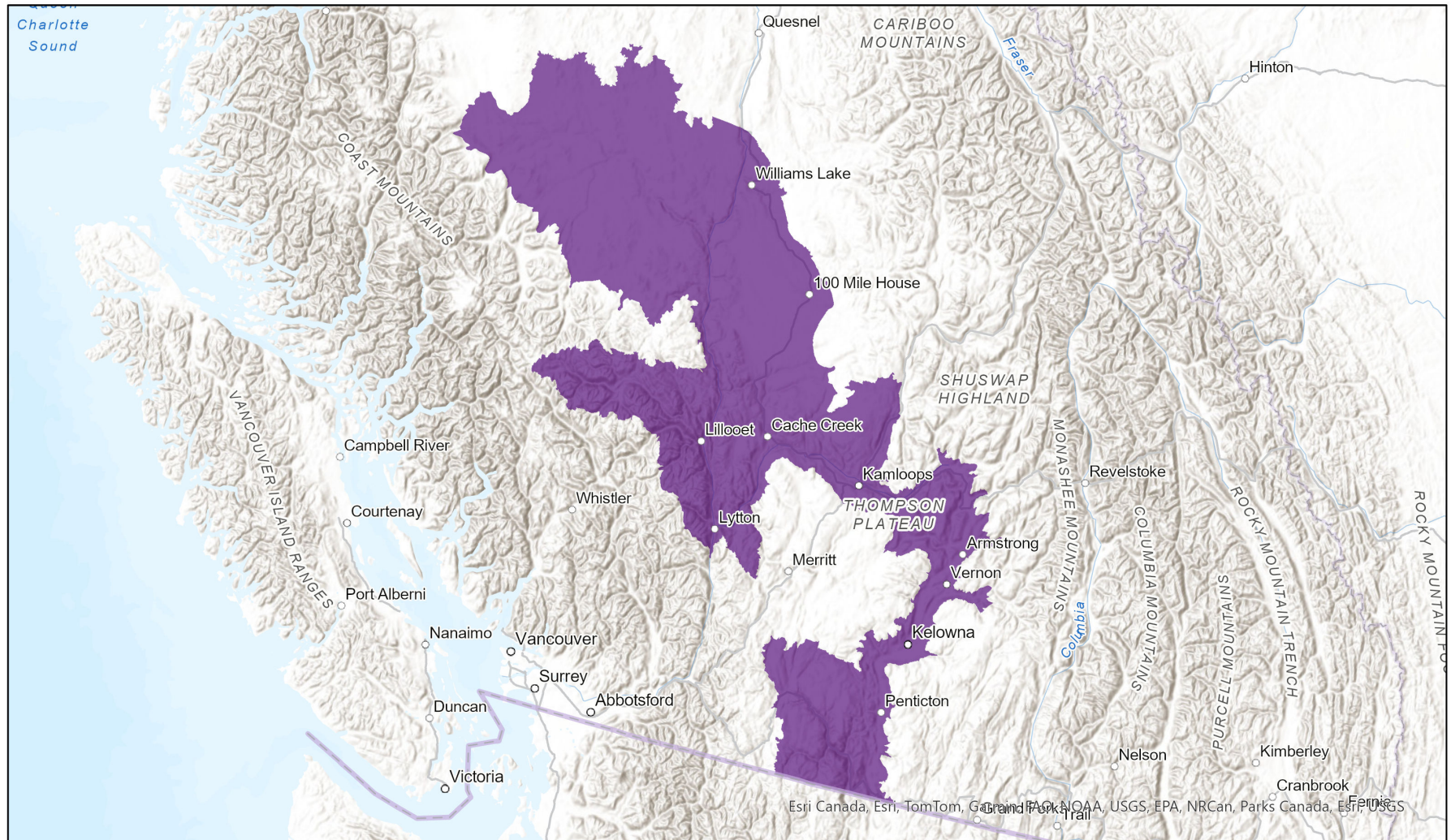


## Ecosystem-based Automated Range (EBAR)

Date Generated: March 16, 2022; Version: 1.0; Stage: Expert Reviewed (National); Scope: Canadian

Synonyms Used: None

- Present
- Presence Expected
- Historical



0 80 160 km

Input Records - 99 BC Incidental Observations, 45 BC Non-sensitive Element Occurrences, 155 BC Survey Observations, 116 BC Telemetry Observations, 3

Map centre: 121.7385° W 50.8166° N  
© NatureServe Canada 2020 under CC BY 4.0

EBAR is relatively coarse scale data and not intended for all applications and analysis. Please see full disclaimer in metadata.

iNaturalist.ca; Expert Reviews - 1 Anonymous

## Ecosystem-based Automated Range (EBAR) Metadata

---

### Species

National Scientific Name:	<i>Euderma maculatum</i> (J.A. Allen, 1891)
Scientific Name Reference:	American Society of Mammalogists (ASM). 2022. Mammal Diversity Database (MDD) (Version 1.10). <a href="https://doi.org/10.5281/zenodo.7394529">https://doi.org/10.5281/zenodo.7394529</a>
National English Name:	Spotted Bat
National French Name:	Oreillard maculé
Element National ID:	163493
Element Global ID:	104813 ( <a href="#">go to NatureServe Explorer</a> )
Element Code:	AMACC07010
Endemism Type:	N
Canadian COSEWIC Name:	
Canadian COSEWIC ID:	170

## Rank/Status

Global Rank:	G4 (reviewed April 04, 2016)
National Rank (Canada):	N3N4 (reviewed 2024)
Subnational Ranks (Canada):	BC=S3S4
National Rank (United States):	N3N4 (reviewed 1996)
Subnational Ranks (United States):	AZ=S2S3, CA=S3, CO=S2, ID=S3, MT=S3, NM=S3, NN=S4, NV=S2, OR=S2, TX=S3, UT=S4, WA=S3, WY=S1S2B
National Rank (Mexico):	None
Subnational Ranks (Mexico):	None
Canadian SARA Status:	Special Concern/Préoccupante (July 14, 2005)
Canadian COSEWIC Status:	Special Concern (November 28, 2014)
US ESA Status:	None

## Range Map

Date Generated:	March 16, 2022
Version:	1.0
Stage:	Expert Reviewed (National)
Scope:	Canadian
Metadata:	Primary Species Name - <i>Euderma maculatum</i> (J.A. Allen, 1891) Input Records - 99 BC Incidental Observations, 45 BC Non-sensitive Element Occurrences, 155 BC Survey Observations, 116 BC Telemetry Observations, 3 iNaturalist.ca; Expert Reviews - 1 Anonymous
Comments:	None <a href="#">Please see spatial data for Ecoshape-level reviewer comments.</a>
Disclaimer:	Please review our <a href="#">methods document</a> before using EBAR.  EBAR range data are relatively coarse scale and appropriate for screening and education purposes, but are not intended for all types of applications and analysis.  The absence of data in any geographic areas does not necessarily mean that a species is not present.  An ecoshape with a presence value does not necessarily mean that a species is present throughout the entire geographic area.
Presence Definitions:	(Please see Comments above for any exceptions)  Present - the species is found within the ecoshape based on species observation data, Element Occurrences, Source Features, Canadian Federal Critical Habitat, or expert opinion.  Presence Expected - expert opinion the species may be present, or the ecoshape overlapped with a range estimate or a habitat suitability model.  Historical - all species occurrence data within the ecoshape contains observation data greater than 40 years old or an Element Occurrence (EO) that was ranked as Extirpated or Historical (EO Rank of H, H?, X or X?).
Usage Type Definitions:	(Please see Comments above for any exceptions)  Breeding - the species is thought to breed within the ecoshape based on eBird Breeding and Behaviour Codes or expert opinion.  Possible Breeding - the species is probably or possibly breeding within the ecoshape based on eBird, BBA or jurisdiction Breeding and Behaviour Codes, or on expert opinion.
Map Projection:	North America Albers Equal Area Conic (WKID 4269)

## Credits

**Suggested Citation:**

NatureServe Canada, 2020. Ecosystem-based Automated Range (EBAR) for *Euderma maculatum*, Version 1.0, Expert Reviewed (National) (Canadian Scope). Ottawa, Canada. Retrieved from [insert url] on [insert date]

**License:**

Ecosystem-based Automated Range (EBAR) Project, Copyright NatureServe Canada 2022 under CC BY 4.0 ([creativecommons.org/licenses/by/4.0/](https://creativecommons.org/licenses/by/4.0/))

**Project Website:**

[www.natureserve.org/canada/ebars](http://www.natureserve.org/canada/ebars)

**Contact:**

[ebars-kba@natureserve.ca](mailto:ebars-kba@natureserve.ca)

**Input References:**

BC Non-sensitive Element Occurrences - British Columbia Conservation Data Centre  
BC Survey Observations - British Columbia Conservation Data Centre  
BC Telemetry Observations - British Columbia Conservation Data Centre  
BC UNVETTED Incidental Observations - British Columbia Conservation Data Centre  
iNaturalist.ca - [California Academy of Sciences and the National Geographic Society](#)

**Reviewers by Taxa:**

[Reviewers by Taxa](#)