

Ascapus montanus

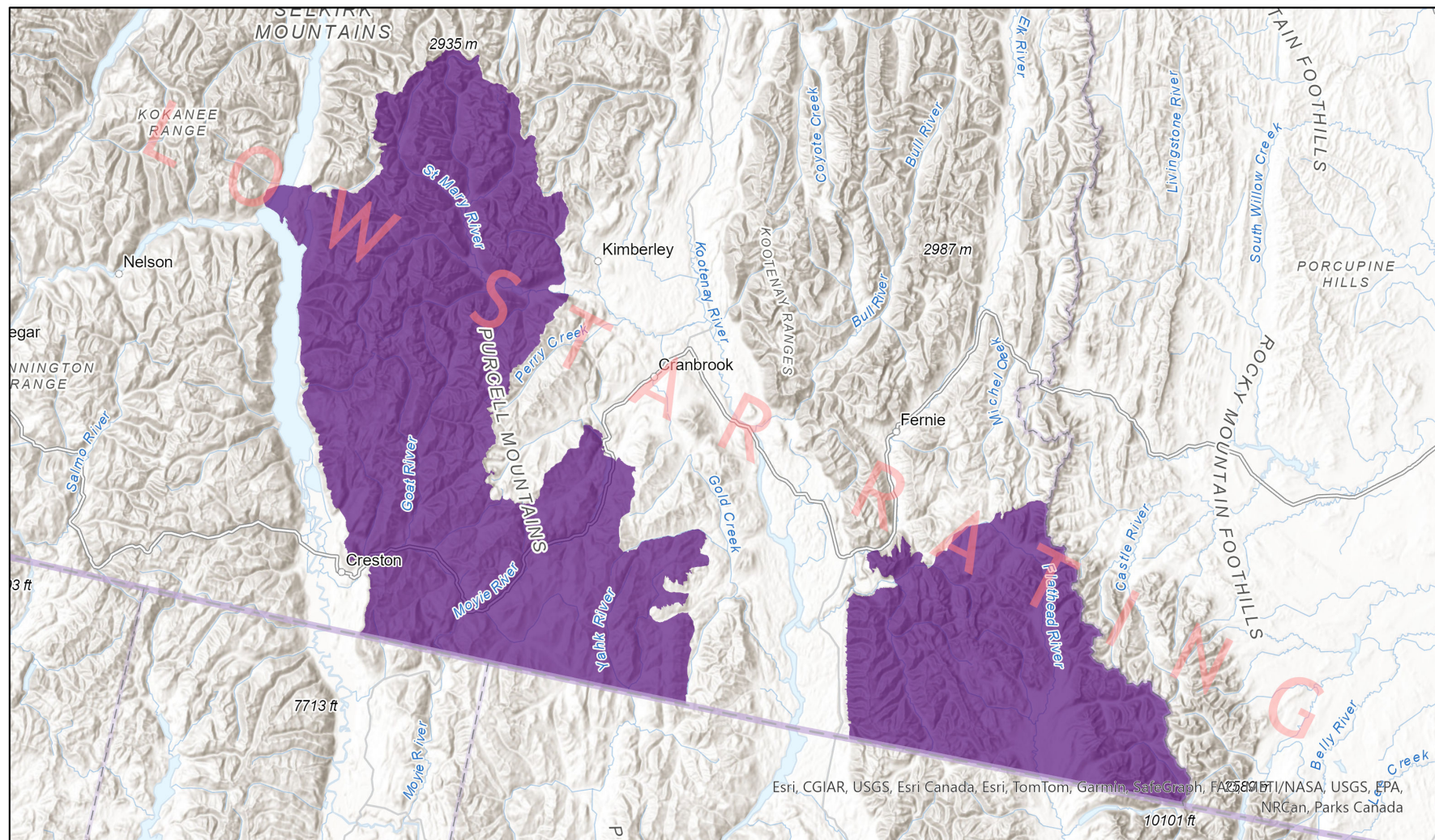


- Present
- Presence Expected
- Historical

Ecosystem-based Automated Range (EBAR)

Date Generated: March 25, 2022; Version: 1.0; Stage: Expert Reviewed (Low Star Rating); Scope: Canadian

Synonyms Used: None



0 20 40 km

Input Records - 8 BC Incidental Observations, 14 BC Non-sensitive Element Occurrences, 111 BC Survey Observations, 12 ECCC Critical Habitat, 13 GBIF, 6

iNaturalist.ca, 5 iNaturalist.org; Expert Reviews - Ian Adams, 1 Anonymous

Map centre: 115.5311°W 49.4635°N

© NatureServe Canada 2020 under CC BY 4.0

EBAR is relatively coarse scale data and not intended for all applications and analysis. Please see full disclaimer in metadata.

Ecosystem-based Automated Range (EBAR) Metadata

Species

National Scientific Name:	<i>Ascaphus montanus</i> Mittleman and Myers, 1949
Scientific Name Reference:	Frost, D.R. 2020. Amphibian Species of the World: an Online Reference. Version 6.0. American Museum of Natural History, New York, USA. Online: http://research.amnh.org/herpetology/amphibia/index.html
National English Name:	Rocky Mountain Tailed Frog
National French Name:	Grenouille-à-queue des Rocheuses
Element National ID:	163121
Element Global ID:	104648 (go to NatureServe Explorer)
Element Code:	AAABA01020
Endemism Type:	N
Canadian COSEWIC Name:	
Canadian COSEWIC ID:	632

Rank/Status

Global Rank:	G4 (reviewed August 01, 2016)
National Rank (Canada):	N2N3 (reviewed 2022)
Subnational Ranks (Canada):	BC=S2S3
National Rank (United States):	N4 (reviewed 2001)
Subnational Ranks (United States):	ID=S3, MT=S4, OR=S2, WA=S2?
National Rank (Mexico):	None
Subnational Ranks (Mexico):	None
Canadian SARA Status:	Threatened/Menacée (June 05, 2003)
Canadian COSEWIC Status:	Threatened (November 01, 2013)
US ESA Status:	None

Range Map

Date Generated:	March 25, 2022
Version:	1.0
Stage:	Expert Reviewed (Low Star Rating)
Scope:	Canadian
Metadata:	Primary Species Name - <i>Ascaphus montanus</i> Mittleman and Myers, 1949 Input Records - 8 BC Incidental Observations, 14 BC Non-sensitive Element Occurrences, 111 BC Survey Observations, 12 ECCC Critical Habitat, 13 GBIF, 6 iNaturalist.ca, 5 iNaturalist.org; Expert Reviews - Ian Adams, 1 Anonymous
Comments:	This range has a low star rating.
Disclaimer:	<p>Please review our methods document before using EBAR.</p> <p>EBAR range data are relatively coarse scale and appropriate for screening and education purposes, but are not intended for all types of applications and analysis.</p> <p>The absence of data in any geographic areas does not necessarily mean that a species is not present.</p> <p>An ecoshape with a presence value does not necessarily mean that a species is present throughout the entire geographic area.</p>
Presence Definitions:	<p>(Please see Comments above for any exceptions)</p> <p>Present - the species is found within the ecoshape based on species observation data, Element Occurrences, Source Features, Canadian Federal Critical Habitat, or expert opinion.</p> <p>Presence Expected - expert opinion the species may be present, or the ecoshape overlapped with a range estimate or a habitat suitability model.</p> <p>Historical - all species occurrence data within the ecoshape contains observation data greater than 40 years old or an Element Occurrence (EO) that was ranked as Extirpated or Historical (EO Rank of H, H?, X or X?).</p>
Usage Type Definitions:	<p>(Please see Comments above for any exceptions)</p> <p>Breeding - the species is thought to breed within the ecoshape based on eBird Breeding and Behaviour Codes or expert opinion.</p> <p>Possible Breeding - the species is probably or possibly breeding within the ecoshape based on eBird, BBA or jurisdiction Breeding and Behaviour Codes, or on expert opinion.</p>
Map Projection:	North America Albers Equal Area Conic (WKID 4269)

Credits

Suggested Citation:

NatureServe Canada, 2020. Ecosystem-based Automated Range (EBAR) for *Ascaphus montanus*, Version 1.0, Expert Reviewed (Low Star Rating) (Canadian Scope). Ottawa, Canada. Retrieved from [insert url] on [insert date]

License:

Ecosystem-based Automated Range (EBAR) Project, Copyright NatureServe Canada 2022 under CC BY 4.0 (creativecommons.org/licenses/by/4.0/)

Project Website:

www.natureserve.org/canada/ebar

Contact:

ebbar-kba@natureserve.ca

Input References:

BC Non-sensitive Element Occurrences - British Columbia Conservation Data Centre

BC Survey Observations - British Columbia Conservation Data Centre

BC UNVETTED Incidental Observations - British Columbia Conservation Data Centre

ECCC Critical Habitat - [Environment and Climate Change Canada](#)

GBIF - [Global Biodiversity Information Facility](#)

iNaturalist.ca - [California Academy of Sciences and the National Geographic Society](#)

iNaturalist.ca (original coordinates for obscured records) - [California Academy of Sciences and the National Geographic Society](#)

iNaturalist.org - [California Academy of Sciences and the National Geographic Society](#)

Reviewers by Taxa:

[Reviewers by Taxa](#)