

# *Anthus spragueii*

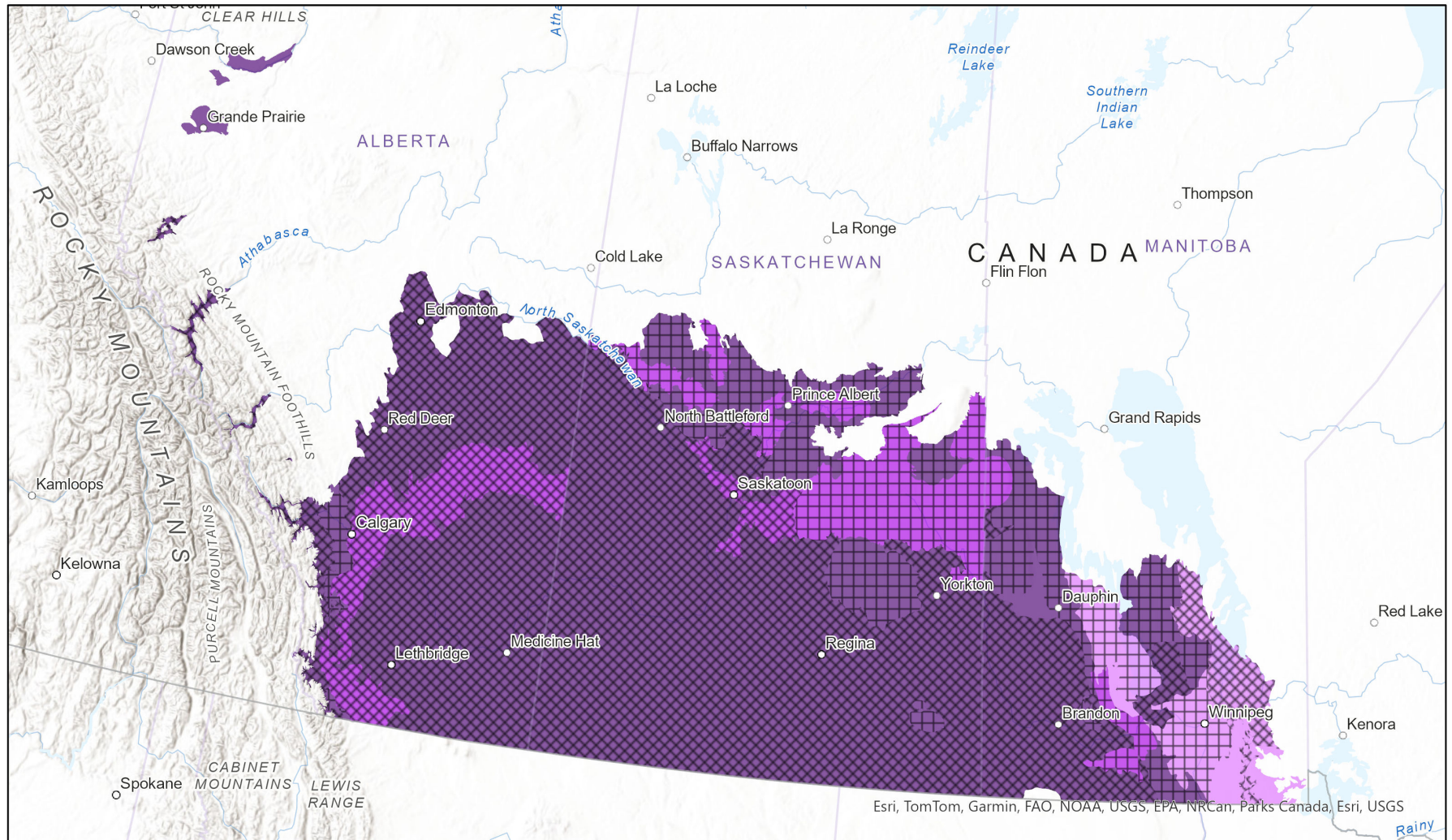


- Present
- Breeding
- Presence Expected
- Possible Breeding
- Historical

## Ecosystem-based Automated Range (EBAR)

Date Generated: March 25, 2024; Version: 1.0; Stage: Expert Reviewed (National); Scope: Canadian

Synonyms Used: None



0 160 320 km

Map centre: 106.9666° W 52.9163° N  
 © NatureServe Canada 2020 under CC BY 4.0

EBAR is relatively coarse scale data and not intended for all applications and analysis. Please see full disclaimer in metadata.

Input Records - 518 AB Breeding Bird Atlas, 8025 eBird, 23329 FWMS, 42 iNaturalist.ca, 12 iNaturalist.ca (original coordinates for obscured records), 228 MB Breeding Bird Atlas, 101 MB Element Occurrences, 72 MB Source Feature Points, 2022 MB Source Feature Polygons, 1 ON Breeding Bird Atlas, 809 SK Breeding Bird Atlas, 426 SK Element Occurrences, 17 SK Observation Points, 236 SK Source Feature Points, 3004 SK Source Feature Polygons, 5 US Element Occurrences; Expert Reviews - Sean Jenniskens, Stephen Davis, Colin Murray

## Ecosystem-based Automated Range (EBAR) Metadata

---

### Species

National Scientific Name:	<i>Anthus spragueii</i> (Audubon, 1844)
Scientific Name Reference:	American Ornithologists' Union (AOU). 1998. Check-list of North American birds. Seventh edition. American Ornithologists' Union, Washington, D.C. [as modified by subsequent supplements and corrections published in <i>The Auk</i> ]. Also available online: <a href="http://www.aou.org/">http://www.aou.org/</a> .
National English Name:	Sprague's Pipit
National French Name:	Pipit de Sprague
Element National ID:	163115
Element Global ID:	104315 ( <a href="#">go to NatureServe Explorer</a> )
Element Code:	ABPBM02060
Endemism Type:	N
Canadian COSEWIC Name:	
Canadian COSEWIC ID:	573

## Rank/Status

Global Rank:	G3G4 (reviewed December 18, 2017)
National Rank (Canada):	N3N4B (reviewed 2023)
Subnational Ranks (Canada):	AB=S3S4B, MB=S2B, SK=S3B
National Rank (United States):	N4B,N4N (reviewed 1997)
Subnational Ranks (United States):	AL=SNRN, AR=S1N, AZ=S2N, CO=SNA, GA=S3, IA=SNRM, KS=SNA, LA=S2N, MN=S1B,SNRM, MO=SNA, MS=SNA, MT=S3B, ND=S3, NE=SNRN, NM=S2N, OK=S3S4, SD=S2B, TX=S3N, WY=SNA
National Rank (Mexico):	None
Subnational Ranks (Mexico):	None
Canadian SARA Status:	Threatened/Menacée (June 05, 2003)
Canadian COSEWIC Status:	Threatened (April 25, 2010)
US ESA Status:	None

## Range Map

Date Generated:	March 25, 2024
Version:	1.0
Stage:	Expert Reviewed (National)
Scope:	Canadian
Metadata:	Primary Species - <i>Anthus spragueii</i> (Audubon, 1844) Input Records - 518 AB Breeding Bird Atlas, 8025 eBird, 23329 FWMIS, 42 iNaturalist.ca, 12 iNaturalist.ca (original coordinates for obscured records), 228 MB Breeding Bird Atlas, 101 MB Element Occurrences, 72 MB Source Feature Points, 2022 MB Source Feature Polygons, 1 ON Breeding Bird Atlas, 809 SK Breeding Bird Atlas, 426 SK Element Occurrences, 17 SK Observation Points, 236 SK Source Feature Points, 3004 SK Source Feature Polygons, 5 US Element Occurrences; Expert Reviews - Sean Jenniskens, Stephen Davis, Colin Murray
Comments:	None <a href="#">Please see spatial data for Ecoshape-level reviewer comments.</a>
Disclaimer:	Please review our <a href="#">methods document</a> before using EBAR. EBAR range data are relatively coarse scale and appropriate for screening and education purposes, but are not intended for all types of applications and analysis. The absence of data in any geographic areas does not necessarily mean that a species is not present.

An ecoshape with a presence value does not necessarily mean that a species is present throughout the entire geographic area.

**Presence Definitions:**

(Please see Comments above for any exceptions)

Present - the species is found within the ecoshape based on species observation data, Element Occurrences, Source Features, Canadian Federal Critical Habitat, or expert opinion.

Presence Expected - expert opinion the species may be present, or the ecoshape overlapped with a range estimate or a habitat suitability model.

Historical - all species occurrence data within the ecoshape contains observation data greater than 40 years old or an Element Occurrence (EO) that was ranked as Extirpated or Historical (EO Rank of H, H?, X or X?).

**Usage Type Definitions:**

(Please see Comments above for any exceptions)

Breeding - the species is thought to breed within the ecoshape based on eBird Breeding and Behaviour Codes or expert opinion.

Possible Breeding - the species is probably or possibly breeding within the ecoshape based on eBird, BBA or jurisdiction Breeding and Behaviour Codes, or on expert opinion.

**Map Projection:**

North America Albers Equal Area Conic (WKID 4269)

## Credits

**Suggested Citation:**

NatureServe Canada, 2020. Ecosystem-based Automated Range (EBAR) for *Anthus spragueii*, Version 1.0, Expert Reviewed (National) (Canadian Scope). Ottawa, Canada. Retrieved from [insert url] on [insert date]

**License:**

Ecosystem-based Automated Range (EBAR) Project, Copyright NatureServe Canada 2022 under CC BY 4.0 ([creativecommons.org/licenses/by/4.0/](https://creativecommons.org/licenses/by/4.0/))

**Project Website:**

[www.natureserve.org/canada/ebars](http://www.natureserve.org/canada/ebars)

**Contact:**

[ebars-kba@natureserve.ca](mailto:ebars-kba@natureserve.ca)

## Input References:

AB Breeding Bird Atlas - Alberta Breeding Bird Atlas. 2005. Data accessed from NatureCounts, a node of the Avian Knowledge Network, Birds Canada. Available: <https://www.naturecounts.ca/>

eBird - [eBird Basic Dataset. Version: EBD\\_relMar-2022. Cornell Lab of Ornithology, Ithaca, New York. Mar 2022. eBird: An online database of bird distribution and abundance \[web application\]. eBird, Cornell Lab of Ornithology, Ithaca, New York. Available: <http://www.ebird.org>](#)

FWMIS - Fish and Wildlife Management Information System (FWMIS), Alberta Environment and Parks.

iNaturalist.ca - [California Academy of Sciences and the National Geographic Society](#)

iNaturalist.ca (original coordinates for obscured records) - [California Academy of Sciences and the National Geographic Society](#)

MB Breeding Bird Atlas - Manitoba Breeding Bird Atlas. 2014. Data accessed from NatureCounts, a node of the Avian Knowledge Network, Birds Canada. Available: <https://www.naturecounts.ca/>

MB Element Occurrences - Manitoba Conservation Data Centre

MB Source Feature Points - Manitoba Conservation Data Centre

MB Source Feature Polygons - Manitoba Conservation Data Centre

ON Breeding Bird Atlas - Birds Canada, Environment Canada's Canadian Wildlife Service, Ontario Nature, Ontario Field Ornithologists and Ontario Ministry of Natural Resources. 2008. Ontario Breeding Bird Atlas Database. Data accessed from NatureCounts, a node of the Avian Knowledge Network, Birds Canada.

SK Breeding Bird Atlas - Saskatchewan Breeding Bird Atlas. 2017. Data accessed from NatureCounts, a node of the Avian Knowledge Network, Birds Canada. Available: <https://www.naturecounts.ca/>

SK Element Occurrences - Saskatchewan Conservation Data Centre

SK Observation Points - Saskatchewan Conservation Data Centre

SK Source Feature Points - Saskatchewan Conservation Data Centre

SK Source Feature Polygons - Saskatchewan Conservation Data Centre

US Element Occurrences - NatureServe and its Natural Heritage Programs

## Reviewers by Taxa:

[Reviewers by Taxa](#)