

# Crotalus oreganus

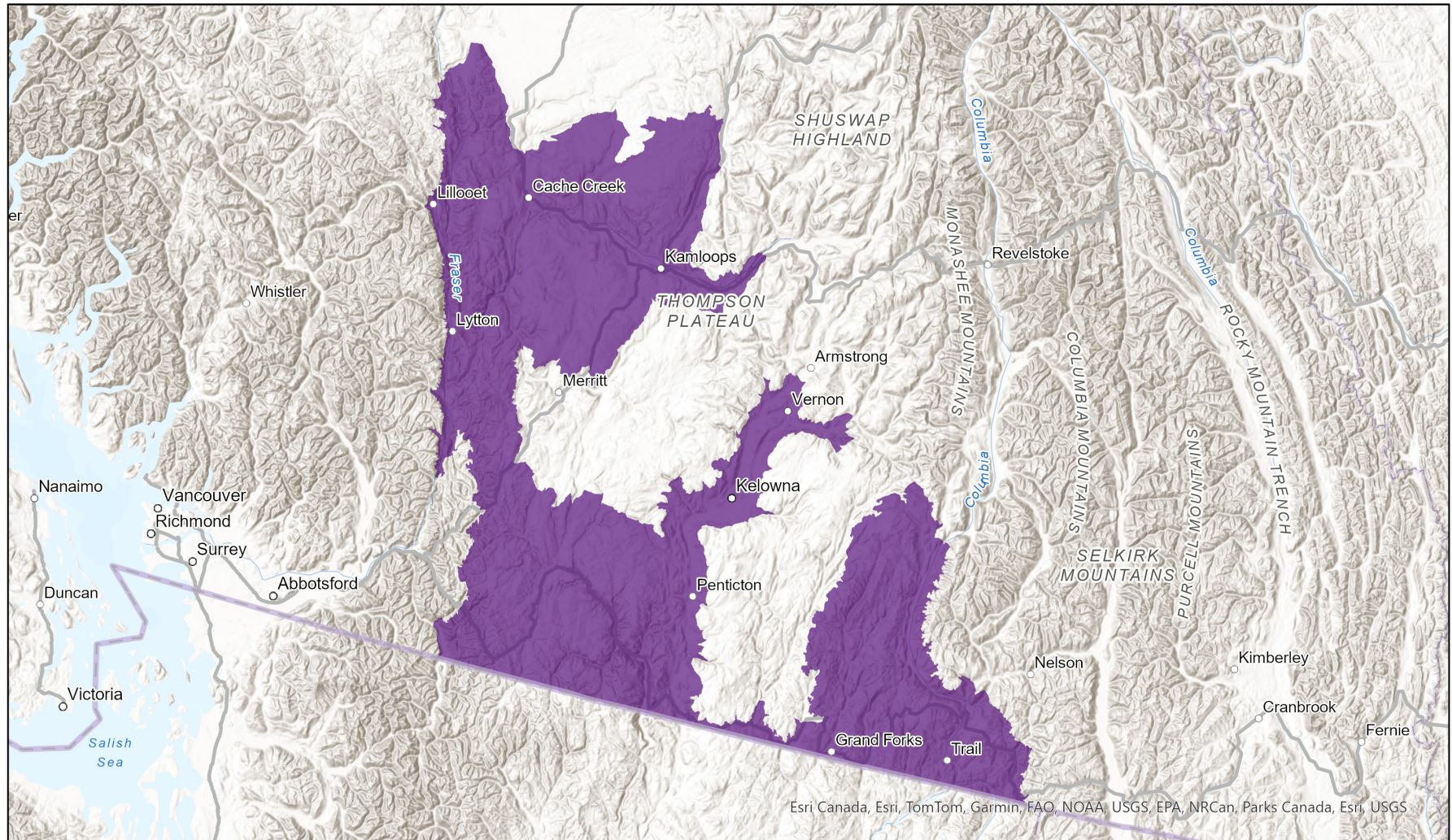


- Present
- Presence Expected
- Historical

## Ecosystem-based Automated Range (EBAR)

Date Generated: January 28, 2022; Version: 1.0; Stage: Expert Reviewed (National); Scope: Canadian

Synonyms Used: None



0 50 100 km

Input Records - 1017 BC Incidental Observations, 5 BC Non-sensitive Element Occurrences, 1011 BC Secured Incidental Observations, 397 BC Secured Survey Observations, 80 BC Sensitive Element Occurrences, 4 BC Survey Observations, 37 BISON, 136 GBIF, 36 iDigBio, 5 iNaturalist.ca, 36 VertNet; Expert Reviews - 1 Anonymous

Map centre: 119.6371°W 50.1599°N  
© NatureServe Canada 2020 under CC BY 4.0

EBAR is relatively coarse scale data and not intended for all applications and analysis. Please see full disclaimer in metadata.

## Ecosystem-based Automated Range (EBAR) Metadata

---

### Species

National Scientific Name:	<i>Crotalus oreganus</i> Holbrook, 1840
Scientific Name Reference:	Crother, B. I. (editor). 2017. Scientific and standard English names of amphibians and reptiles of North America north of Mexico, with comments regarding confidence in our understanding. 8th edition. SSAR Herpetological Circular 43:1-104. [Updates in SSAR North American Species Names Database at: <a href="https://ssarherps.org/cndb">https://ssarherps.org/cndb</a> ]
National English Name:	Western Rattlesnake
National French Name:	Crotale de l'Ouest
Element National ID:	738811
Element Global ID:	104250 ( <a href="#">go to NatureServe Explorer</a> )
Element Code:	ARADE02140
Endemism Type:	N
Canadian COSEWIC Name:	
Canadian COSEWIC ID:	808

## Rank/Status

Global Rank:	G5 (reviewed February 02, 2016)
National Rank (Canada):	N2N3 (reviewed 2021)
Subnational Ranks (Canada):	BC=S2S3
National Rank (United States):	N5 (reviewed 2005)
Subnational Ranks (United States):	AZ=S5, CA=SNR, CO=SNR, ID=S4, NN=SNR, NV=S5, OR=S5, UT=SNR, WA=S5, WY=S1
National Rank (Mexico):	None
Subnational Ranks (Mexico):	None
Canadian SARA Status:	Threatened/Menacée (July 14, 2005)
Canadian COSEWIC Status:	Threatened (May 01, 2015)
US ESA Status:	None



## Range Map

Date Generated:	January 28, 2022
Version:	1.0
Stage:	Expert Reviewed (National)
Scope:	Canadian
Metadata:	<p>Primary Species Name - <i>Crotalus oreganus</i> Holbrook, 1840</p> <p>Input Records - 1017 BC Incidental Observations, 5 BC Non-sensitive Element Occurrences, 1011 BC Secured Incidental Observations, 397 BC Secured Survey Observations, 80 BC Sensitive Element Occurrences, 4 BC Survey Observations, 37 BISON, 136 GBIF, 36 iDigBio, 5 iNaturalist.ca, 36 VertNet; Expert Reviews - 1 Anonymous</p>
Comments:	<p>None</p> <p><a href="#">Please see spatial data for Ecoshape-level reviewer comments.</a></p>
Disclaimer:	<p>Please review our <a href="#">methods document</a> before using EBAR.</p> <p>EBAR range data are relatively coarse scale and appropriate for screening and education purposes, but are not intended for all types of applications and analysis.</p> <p>The absence of data in any geographic areas does not necessarily mean that a species is not present.</p> <p>An ecoshape with a presence value does not necessarily mean that a species is present throughout the entire geographic area.</p>
Presence Definitions:	<p>(Please see Comments above for any exceptions)</p> <p>Present - the species is found within the ecoshape based on species observation data, Element Occurrences, Source Features, Canadian Federal Critical Habitat, or expert opinion.</p> <p>Presence Expected - expert opinion the species may be present, or the ecoshape overlapped with a range estimate or a habitat suitability model.</p> <p>Historical - all species occurrence data within the ecoshape contains observation data greater than 40 years old or an Element Occurrence (EO) that was ranked as Extirpated or Historical (EO Rank of H, H?, X or X?).</p>
Usage Type Definitions:	<p>(Please see Comments above for any exceptions)</p> <p>Breeding - the species is thought to breed within the ecoshape based on eBird Breeding and Behaviour Codes or expert opinion.</p> <p>Possible Breeding - the species is probably or possibly breeding within the ecoshape based on eBird, BBA or jurisdiction Breeding and Behaviour Codes, or on expert opinion.</p>
Map Projection:	North America Albers Equal Area Conic (WKID 4269)

## Credits

Suggested Citation:	NatureServe Canada, 2020. Ecosystem-based Automated Range (EBAR) for <i>Crotalus oreganus</i> , Version 1.0, Expert Reviewed (National) (Canadian Scope). Ottawa, Canada. Retrieved from [insert url] on [insert date]
License:	Ecosystem-based Automated Range (EBAR) Project, Copyright NatureServe Canada 2022 under CC BY 4.0 ( <a href="https://creativecommons.org/licenses/by/4.0/">creativecommons.org/licenses/by/4.0/</a> )
Project Website:	<a href="http://www.natureserve.org/canada/ebars">www.natureserve.org/canada/ebars</a>
Contact:	<a href="mailto:ebars-kba@natureserve.ca">ebars-kba@natureserve.ca</a>
Input References:	BC Non-sensitive Element Occurrences - British Columbia Conservation Data Centre BC Secured Survey Observations - British Columbia Conservation Data Centre BC Sensitive Element Occurrences - British Columbia Conservation Data Centre BC Survey Observations - British Columbia Conservation Data Centre BC UNVETTED Incidental Observations - British Columbia Conservation Data Centre BC UNVETTED Secured Incidental Observations - British Columbia Conservation Data Centre BISON - <a href="#">United States Geological Survey</a> GBIF - <a href="#">Global Biodiversity Information Facility</a> iDigBio - <a href="#">Integrated Digital Biocollection</a> iNaturalist.ca (original coordinates for obscured records) - <a href="#">California Academy of Sciences and the National Geographic Society</a> VertNet - <a href="#">National Science Foundation</a>
Reviewers by Taxa:	<a href="#">Reviewers by Taxa</a>