

# Myotis californicus

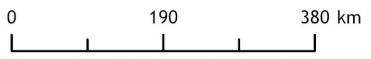
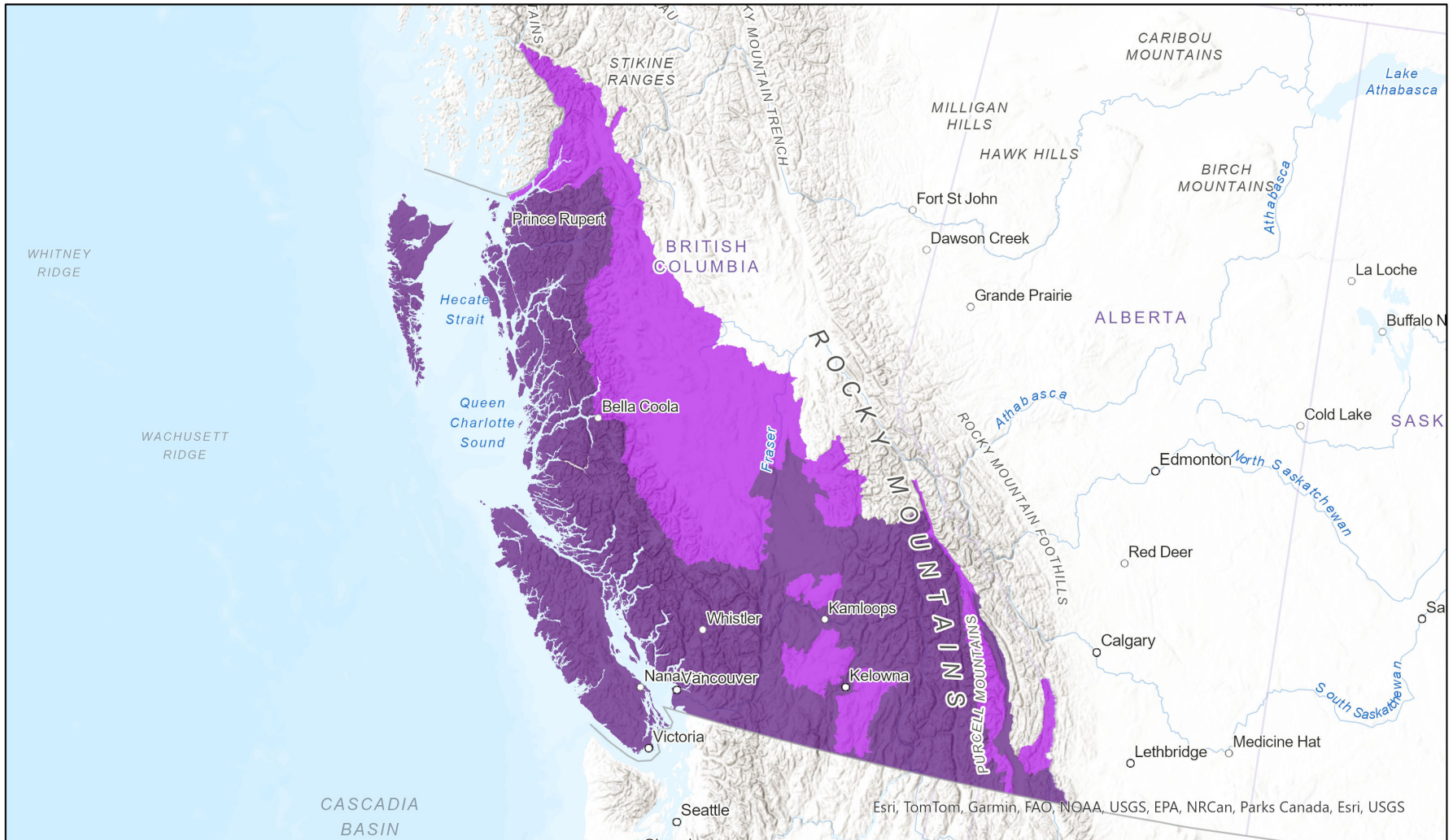


## Ecosystem-based Automated Range (EBAR)

Date Generated: March 18, 2024; Version: 1.0; Stage: Expert Reviewed (National); Scope: Canadian

Synonyms Used: None

- Present
- Presence Expected
- Historical



Input Records - 995 BC Secured Survey Observations, 611 BC Survey Observations, 91 GBIF, 12 iNaturalist.ca (original coordinates for obscured records); Expert Reviews - BC Experts, 1 Anonymous

Map centre: 123.8046° W 52.8068° N  
 © NatureServe Canada 2020 under CC BY 4.0

EBAR is relatively coarse scale data and not intended for all applications and analysis. Please see full disclaimer in metadata.

## Ecosystem-based Automated Range (EBAR) Metadata

---

### Species

National Scientific Name:	<i>Myotis californicus</i> (Audubon and Bachman, 1842)
Scientific Name Reference:	American Society of Mammalogists (ASM). 2022. Mammal Diversity Database (MDD) (Version 1.10). <a href="https://doi.org/10.5281/zenodo.7394529">https://doi.org/10.5281/zenodo.7394529</a>
National English Name:	California Myotis
National French Name:	Chauve-souris de Californie
Element National ID:	163183
Element Global ID:	104207 ( <a href="#">go to NatureServe Explorer</a> )
Element Code:	AMACC01120
Endemism Type:	N
Canadian COSEWIC Name:	
Canadian COSEWIC ID:	

## Rank/Status

<b>Global Rank:</b>	G5 (reviewed April 04, 2016)
<b>National Rank (Canada):</b>	N4N5 (reviewed 2024)
<b>Subnational Ranks (Canada):</b>	AB=SU, BC=S4S5
<b>National Rank (United States):</b>	N5 (reviewed 1996)
<b>Subnational Ranks (United States):</b>	AK=S4, AZ=S4, CA=SNR, CO=S3, ID=S3, MT=S4, NM=S4S5, NN=S5, NV=S3S4, OR=S3, TX=S3, UT=S4, WA=S4, WY=SNA
<b>National Rank (Mexico):</b>	None
<b>Subnational Ranks (Mexico):</b>	None
<b>Canadian SARA Status:</b>	None
<b>Canadian COSEWIC Status:</b>	None
<b>US ESA Status:</b>	None

## Range Map

<b>Date Generated:</b>	March 18, 2024
<b>Version:</b>	1.0
<b>Stage:</b>	Expert Reviewed (National)
<b>Scope:</b>	Canadian
<b>Metadata:</b>	Primary Species - <i>Myotis californicus</i> (Audubon and Bachman, 1842) Input Records - 995 BC Secured Survey Observations, 611 BC Survey Observations, 91 GBIF, 12 iNaturalist.ca (original coordinates for obscured records); Expert Reviews - BC Experts, 1 Anonymous
<b>Comments:</b>	None <a href="#">Please see spatial data for Ecoshape-level reviewer comments.</a>
<b>Disclaimer:</b>	Please review our <a href="#">methods document</a> before using EBAR.  EBAR range data are relatively coarse scale and appropriate for screening and education purposes, but are not intended for all types of applications and analysis.  The absence of data in any geographic areas does not necessarily mean that a species is not present.  An ecoshape with a presence value does not necessarily mean that a species is present throughout the entire geographic area.
<b>Presence Definitions:</b>	(Please see Comments above for any exceptions)  Present - the species is found within the ecoshape based on species observation data, Element Occurrences, Source Features, Canadian Federal Critical Habitat, or expert opinion.  Presence Expected - expert opinion the species may be present, or the ecoshape overlapped with a range estimate or a habitat suitability model.  Historical - all species occurrence data within the ecoshape contains observation data greater than 40 years old or an Element Occurrence (EO) that was ranked as Extirpated or Historical (EO Rank of H, H?, X or X?).
<b>Usage Type Definitions:</b>	(Please see Comments above for any exceptions)  Breeding - the species is thought to breed within the ecoshape based on eBird Breeding and Behaviour Codes or expert opinion.  Possible Breeding - the species is probably or possibly breeding within the ecoshape based on eBird, BBA or jurisdiction Breeding and Behaviour Codes, or on expert opinion.
<b>Map Projection:</b>	North America Albers Equal Area Conic (WKID 4269)

## Credits

<b>Suggested Citation:</b>	NatureServe Canada, 2020. Ecosystem-based Automated Range (EBAR) for <i>Myotis californicus</i> , Version 1.0, Expert Reviewed (National) (Canadian Scope). Ottawa, Canada. Retrieved from [insert url] on [insert date]
<b>License:</b>	Ecosystem-based Automated Range (EBAR) Project, Copyright NatureServe Canada 2022 under CC BY 4.0 ( <a href="https://creativecommons.org/licenses/by/4.0/">creativecommons.org/licenses/by/4.0/</a> )
<b>Project Website:</b>	<a href="http://www.natureserve.org/canada/ebar">www.natureserve.org/canada/ebar</a>
<b>Contact:</b>	<a href="mailto:ebar-kba@natureserve.ca">ebar-kba@natureserve.ca</a>
<b>Input References:</b>	BC Secured Survey Observations - British Columbia Conservation Data Centre BC Survey Observations - British Columbia Conservation Data Centre GBIF - <a href="#">Global Biodiversity Information Facility</a> iNaturalist.ca (original coordinates for obscured records) - <a href="#">California Academy of Sciences and the National Geographic Society</a>
<b>Reviewers by Taxa:</b>	<a href="#">Reviewers by Taxa</a>