

Sylvilagus nuttallii nuttallii

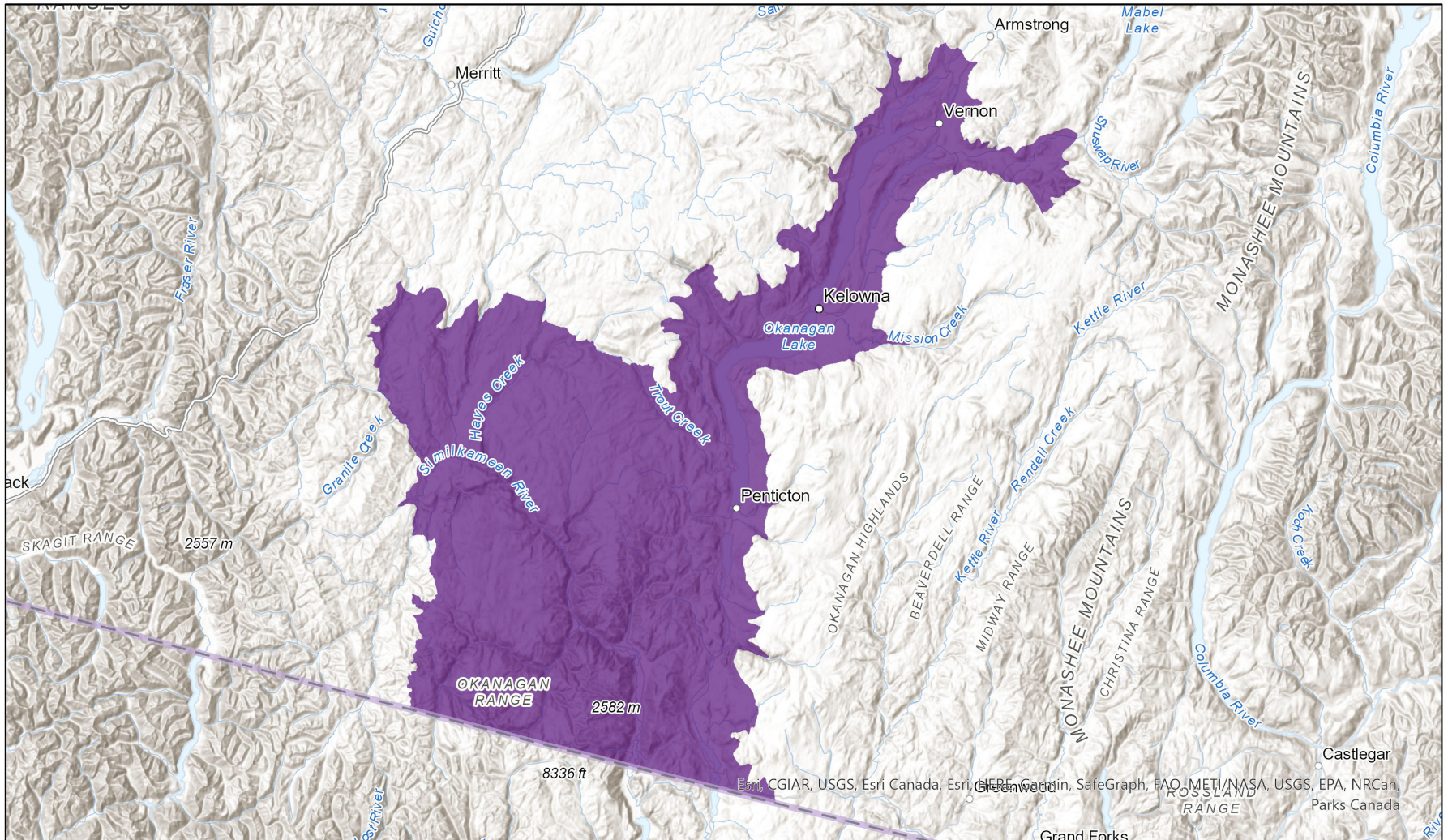


Ecosystem-based Automated Range (EBAR)

Date Generated: August 14, 2023; Version: 1.0; Stage: Expert Reviewed; Scope: Global

Synonyms Used: None

- Present
- Presence Expected
- Historical



Map centre: 119.6975° W 49.6443° N
 © NatureServe Canada 2020 under CC BY 4.0

EBAR is relatively coarse scale data and not intended for all applications and analysis. Please see full disclaimer in metadata.

Ecosystem-based Automated Range (EBAR) Metadata

Species

National Scientific Name:	<i>Sylvilagus nuttallii nuttallii</i> (Bachman, 1837)
Scientific Name Reference:	Hall, E. R. 1981a. The Mammals of North America, second edition. Vols. I & II. John Wiley & Sons, New York, New York. 1181 pp.
National English Name:	Nuttall's Cottontail
National French Name:	Lapin de Nuttall
Element National ID:	164124
Element Global ID:	104182 (go to NatureServe Explorer)
Element Code:	AMAEB01064
Endemism Type:	N
Canadian COSEWIC Name:	
Canadian COSEWIC ID:	163

Rank/Status

Global Rank:	G5T5 (reviewed April 05, 2016)
National Rank (Canada):	N3 (reviewed 2017)
Subnational Ranks (Canada):	BC=SNR
National Rank (United States):	N5 (reviewed 1996)
Subnational Ranks (United States):	None
National Rank (Mexico):	None
Subnational Ranks (Mexico):	None
Canadian SARA Status:	Special Concern/Préoccupante (December 13, 2007)
Canadian COSEWIC Status:	Special Concern (November 27, 2016)
US ESA Status:	None

Range Map

Date Generated:	August 14, 2023
Version:	1.0
Stage:	Expert Reviewed
Scope:	Global
Metadata:	Primary Species - <i>Sylvilagus nuttallii nuttallii</i> (Bachman, 1837); Secondary Species - <i>Sylvilagus nuttallii</i> (Bachman, 1837) Input Records - 8 BC Non-sensitive Element Occurrences, 129 BC Survey Observations, 5 BISON, 33 GBIF, 8 iDigBio, 31 iNaturalist.ca, 4 iNaturalist.org, 7 VertNet; Expert Reviews - BC Experts
Comments:	None Please see spatial data for Ecoshape-level reviewer comments.
Disclaimer:	Please review our methods document before using EBAR. EBAR range data are relatively coarse scale and appropriate for screening and education purposes, but are not intended for all types of applications and analysis. The absence of data in any geographic areas does not necessarily mean that a species is not present. An ecoshape with a presence value does not necessarily mean that a species is present throughout the entire geographic area.
Presence Definitions:	(Please see Comments above for any exceptions) Present - the species is found within the ecoshape based on species observation data, Element Occurrences, Source Features, Canadian Federal Critical Habitat, or expert opinion. Presence Expected - expert opinion the species may be present, or the ecoshape overlapped with a range estimate or a habitat suitability model. Historical - all species occurrence data within the ecoshape contains observation data greater than 40 years old or an Element Occurrence (EO) that was ranked as Extirpated or Historical (EO Rank of H, H?, X or X?).
Usage Type Definitions:	(Please see Comments above for any exceptions) Breeding - the species is thought to breed within the ecoshape based on eBird Breeding and Behaviour Codes or expert opinion. Possible Breeding - the species is probably or possibly breeding within the ecoshape based on eBird, BBA or jurisdiction Breeding and Behaviour Codes, or on expert opinion.
Map Projection:	North America Albers Equal Area Conic (WKID 4269)

Credits

Suggested Citation:

NatureServe Canada, 2020. Ecosystem-based Automated Range (EBAR) for *Sylvilagus nuttallii nuttallii*, Version 1.0, Expert Reviewed (Global Scope). Ottawa, Canada. Retrieved from [insert url] on [insert date]

License:

Ecosystem-based Automated Range (EBAR) Project, Copyright NatureServe Canada 2022 under CC BY 4.0 (creativecommons.org/licenses/by/4.0/)

Project Website:

www.natureserve.org/canada/ebar

Contact:

ebar-kba@natureserve.ca

Input References:

BC Non-sensitive Element Occurrences - British Columbia Conservation Data Centre

BC Survey Observations - British Columbia Conservation Data Centre

BISON - United States Geological Survey (<https://bison.usgs.gov/>)

GBIF - Global Biodiversity Information Facility (<https://www.gbif.org/>)

iDigBio - Integrated Digital Biocollection (<https://www.idigbio.org/>)

iNaturalist.ca - California Academy of Sciences and the National Geographic Society (<https://www.inaturalist.ca/>)

iNaturalist.org - California Academy of Sciences and the National Geographic Society (<https://www.inaturalist.org/>)

VertNet - National Science Foundation (<http://vertnet.org/>)

Reviewers by Taxa:

[Reviewers by Taxa](#)