

Vulpes velox

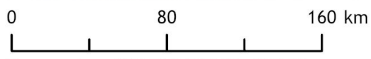
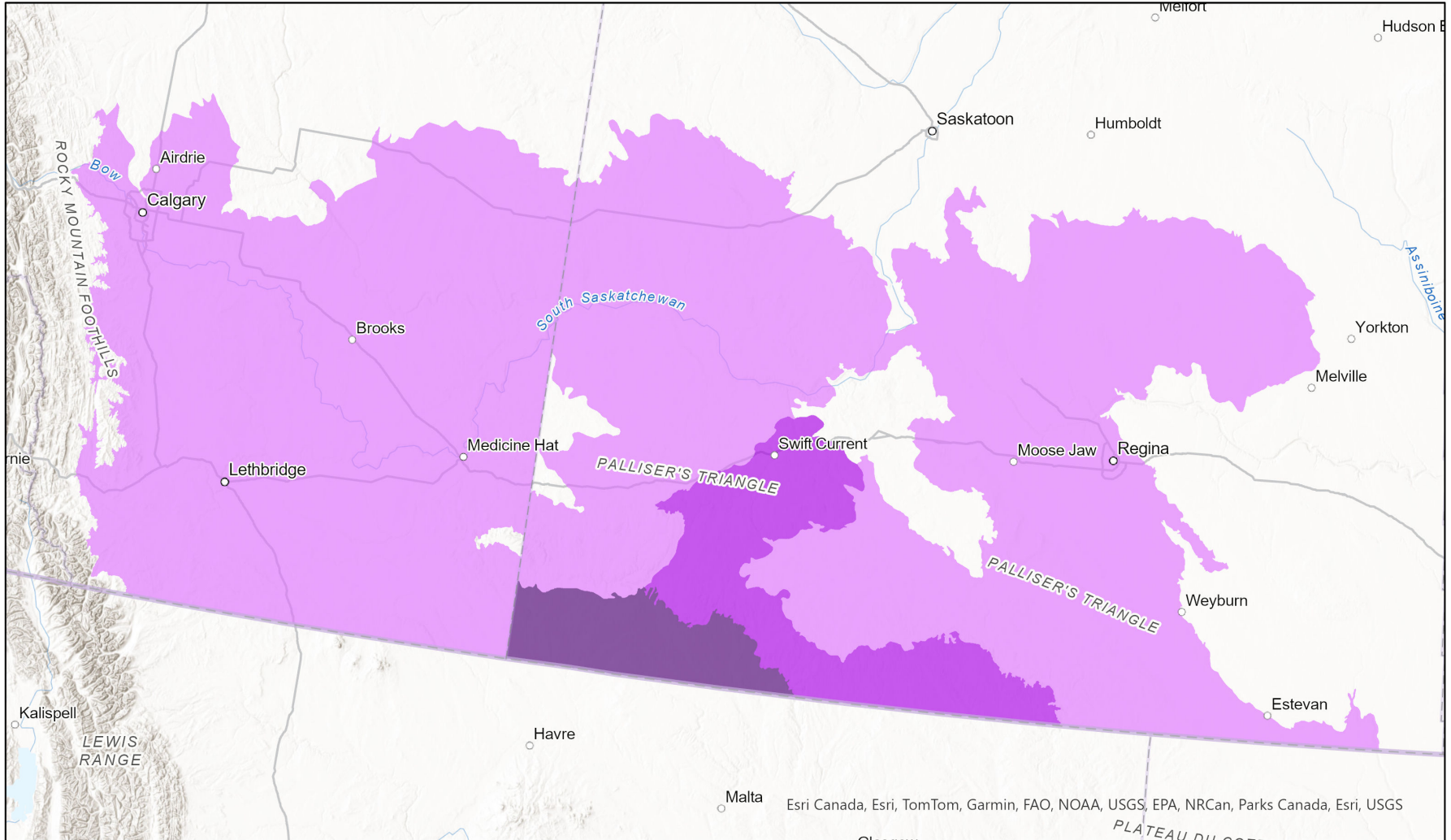


- Present
- Presence Expected
- Historical

Ecosystem-based Automated Range (EBAR)

Date Generated: March 7, 2024; Version: 1.0; Stage: Expert Reviewed (National); Scope: Canadian

Synonyms Used: None



Input Records - 2 BISON, 756 FWMS, 53 GBIF, 2 iDigBio, 6 iNaturalist.ca, 30 iNaturalist.ca (original coordinates for obscured records), 5 iNaturalist.org, 78 MT Animal Occurrences, 4 MT Ranges, 25 SK Element Occurrences, 158 SK Source Feature Points, 264 SK Source Feature Polygons, 5 US Element Occurrences, 1 VertNet; Expert Reviews - Colleen Matzke, 2 Anonymous

Map centre: 108.2924° W 50.4292° N
© NatureServe Canada 2020 under CC BY 4.0

EBAR is relatively coarse scale data and not intended for all applications and analysis. Please see full disclaimer in metadata.

Ecosystem-based Automated Range (EBAR) Metadata

Species

National Scientific Name:	<i>Vulpes velox</i> (Say, 1823)
Scientific Name Reference:	Bradley, R.D., L.K. Ammerman, R.J. Baker, L.C. Bradley, J.A. Cook, R.C. Dowler, C. Jones, D.J. Schmidly, F.B. Stangl Jr., R.A. Van den Bussche and B. Würsig. 2014. Revised checklist of North American mammals north of Mexico, 2014. Museum of Texas Tech University Occasional Papers 327:1-28. Available at: http://www.nsrl.ttu.edu/publications/opapers/ops/OP327.pdf
National English Name:	Swift Fox
National French Name:	Renard véloce
Element National ID:	161947
Element Global ID:	104178 (go to NatureServe Explorer)
Element Code:	AMAJA03030
Endemism Type:	N
Canadian COSEWIC Name:	
Canadian COSEWIC ID:	140

Rank/Status

Global Rank:	G3 (reviewed April 05, 2016)
National Rank (Canada):	N3 (reviewed 2022)
Subnational Ranks (Canada):	AB=S1S2, MB= SX, SK=S3
National Rank (United States):	N3 (reviewed 1996)
Subnational Ranks (United States):	CO=S3, IA=SNR, KS=S3, MN= SX, MT=S3, ND=S1, NE=S2, NM=S2, OK=S1S2, SD=S3, TX=S1?, WY=S2
National Rank (Mexico):	None
Subnational Ranks (Mexico):	None
Canadian SARA Status:	Threatened/Menacée (June 05, 2003)
Canadian COSEWIC Status:	Threatened (May 01, 2021)
US ESA Status:	PS:LE

Range Map

Date Generated:	March 07, 2024
Version:	1.0
Stage:	Expert Reviewed (National)
Scope:	Canadian
Metadata:	Primary Species - <i>Vulpes velox</i> (Say, 1823) Input Records - 2 BISON, 756 FWMIS, 53 GBIF, 2 iDigBio, 6 iNaturalist.ca, 30 iNaturalist.ca (original coordinates for obscured records), 5 iNaturalist.org, 78 MT Animal Occurrences, 4 MT Ranges, 25 SK Element Occurrences, 158 SK Source Feature Points, 264 SK Source Feature Polygons, 5 US Element Occurrences, 1 VertNet; Expert Reviews - Colleen Matzke, 2 Anonymous
Comments:	None Please see spatial data for Ecoshape-level reviewer comments.
Disclaimer:	Please review our methods document before using EBAR. EBAR range data are relatively coarse scale and appropriate for screening and education purposes, but are not intended for all types of applications and analysis. The absence of data in any geographic areas does not necessarily mean that a species is not present. An ecoshape with a presence value does not necessarily mean that a species is present throughout the entire geographic area.
Presence Definitions:	(Please see Comments above for any exceptions) Present - the species is found within the ecoshape based on species observation data, Element Occurrences, Source Features, Canadian Federal Critical Habitat, or expert opinion. Presence Expected - expert opinion the species may be present, or the ecoshape overlapped with a range estimate or a habitat suitability model. Historical - all species occurrence data within the ecoshape contains observation data greater than 40 years old or an Element Occurrence (EO) that was ranked as Extirpated or Historical (EO Rank of H, H?, X or X?).
Usage Type Definitions:	(Please see Comments above for any exceptions) Breeding - the species is thought to breed within the ecoshape based on eBird Breeding and Behaviour Codes or expert opinion. Possible Breeding - the species is probably or possibly breeding within the ecoshape based on eBird, BBA or jurisdiction Breeding and Behaviour Codes, or on expert opinion.
Map Projection:	North America Albers Equal Area Conic (WKID 4269)

Credits

Suggested Citation:	NatureServe Canada, 2020. Ecosystem-based Automated Range (EBAR) for <i>Vulpes velox</i> , Version 1.0, Expert Reviewed (National) (Canadian Scope). Ottawa, Canada. Retrieved from [insert url] on [insert date]
License:	Ecosystem-based Automated Range (EBAR) Project, Copyright NatureServe Canada 2022 under CC BY 4.0 (creativecommons.org/licenses/by/4.0/)
Project Website:	www.natureserve.org/canada/ebar
Contact:	ebar-kba@natureserve.ca
Input References:	BISON - United States Geological Survey FWMIS - Fish and Wildlife Management Information System (FWMIS), Alberta Environment and Parks. GBIF - Global Biodiversity Information Facility iDigBio - Integrated Digital Biocollection iNaturalist.ca - California Academy of Sciences and the National Geographic Society iNaturalist.ca (original coordinates for obscured records) - California Academy of Sciences and the National Geographic Society iNaturalist.org - California Academy of Sciences and the National Geographic Society MT Animal Occurrences - Montana Natural Heritage Program MT Ranges - Montana Natural Heritage Program SK Element Occurrences - Saskatchewan Conservation Data Centre SK Source Feature Points - Saskatchewan Conservation Data Centre SK Source Feature Polygons - Saskatchewan Conservation Data Centre US Element Occurrences - NatureServe and its Natural Heritage Programs VertNet - National Science Foundation
Reviewers by Taxa:	Reviewers by Taxa