

Chrysemys picta marginata

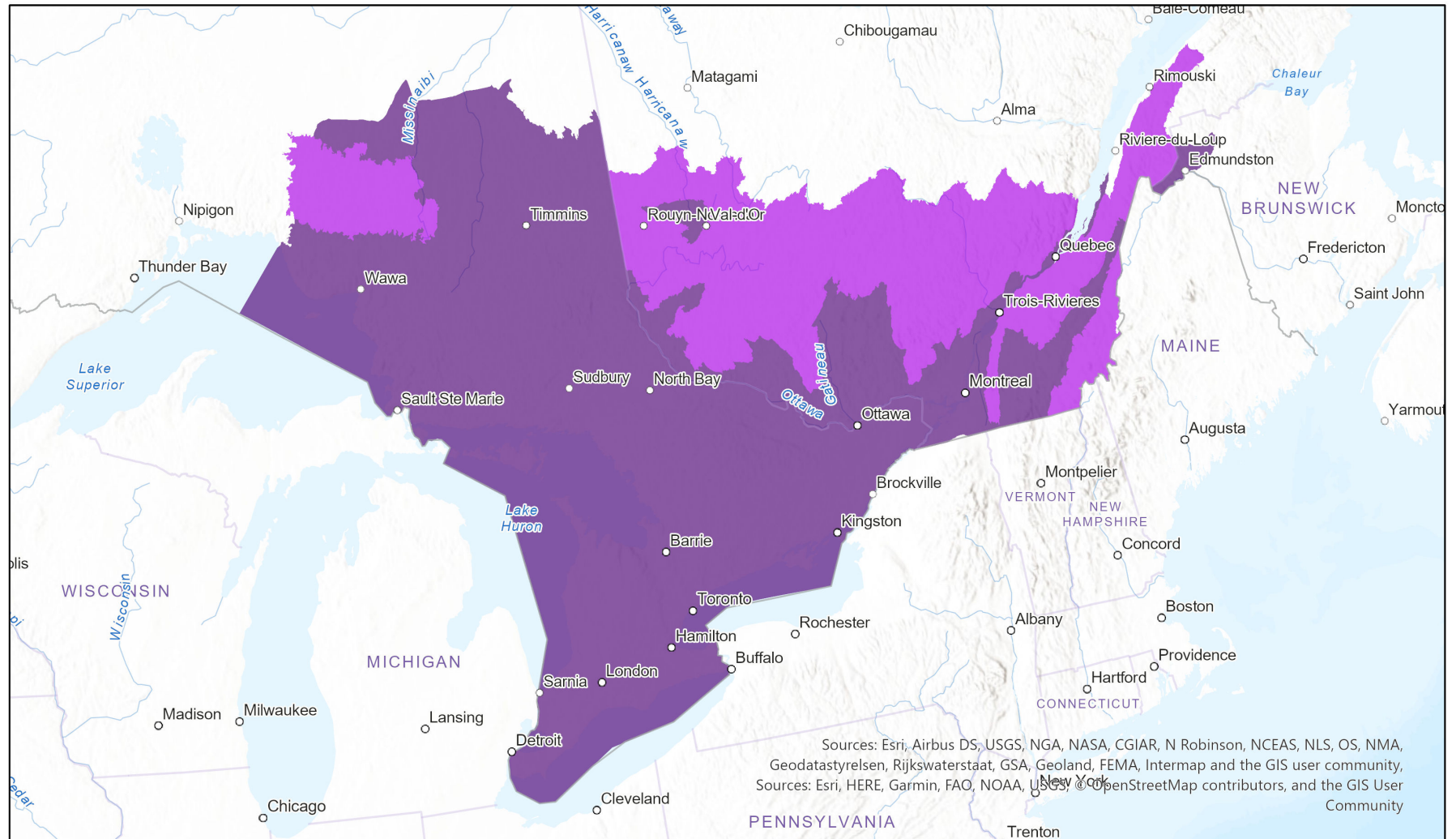


- Present
- Presence Expected
- Historical

Ecosystem-based Automated Range (EBAR)

Date Generated: March 14, 2023; Version: 1.0; Stage: Expert Reviewed (National); Scope: Canadian

Synonyms Used: None



Sources: Esri, Airbus DS, USGS, NGA, NASA, CGIAR, N Robinson, NCEAS, NLS, OS, NMA, Geodatastyrelsen, Rijkswaterstaat, GSA, Geoland, FEMA, Intermap and the GIS user community, Sources: Esri, HERE, Garmin, FAO, NOAA, USGS, © OpenStreetMap contributors, and the GIS User Community

0 175 350 km

Input Records - 40 8Trees, 1172 BISON, 343 iDigBio, 16689 iNaturalist.ca, 31 iNaturalist.org, 23128 ON Observations and Source Features, 25164 ON Observations not

in Biotics, 130 VertNet; Expert Reviews - Christopher Edge, Patrick Moldovan

Map centre: 78.1144°W 45.7543°N

© NatureServe Canada 2020 under CC BY 4.0

EBAR is relatively coarse scale data and not intended for all applications and analysis. Please see full disclaimer in metadata.

Ecosystem-based Automated Range (EBAR) Metadata

Species

National Scientific Name:	<i>Chrysemys picta marginata</i> Agassiz, 1857
Scientific Name Reference:	Turtle Taxonomy Working Group (TTWG) [Rhodin, A. G. J., J. B. Iverson, R. Bour, U. Fritz, A. Georges, H. B. Shaffer, and P. P. van Dijk]. 2021. Turtles of the World: Annotated Checklist and Atlas of Taxonomy, Synonymy, Distribution, and Conservation Status (9th Ed.). In: Rhodin, A. G. J., J. B. Iverson, P. P. van Dijk, C. B. Stanford, E. V. Goode, K. A. Buhlmann, and R. A. Mittermeier (Eds.). Conservation Biology of Freshwater Turtles and Tortoises: A Compilation Project of the IUCN/SSC Tortoise and Freshwater Turtle Specialist Group. Chelonian Research Monographs 8:1-472. doi: 10.3854/crm.8.checklist.atlas.v9.2021.
National English Name:	Midland Painted Turtle
National French Name:	Tortue peinte du centre
Element National ID:	164326
Element Global ID:	103460 (go to NatureServe Explorer)
Element Code:	ARAAD01013
Endemism Type:	N
Canadian COSEWIC Name:	
Canadian COSEWIC ID:	1403

Rank/Status

Global Rank:	G5T5 (reviewed February 02, 2016)
National Rank (Canada):	N4 (reviewed 2016)
Subnational Ranks (Canada):	ON=S4, QC=SNR
National Rank (United States):	N5 (reviewed 1996)
Subnational Ranks (United States):	IL=S5, IN=S4, KY=S5, NJ=SU, PA=S5, WV=S5
National Rank (Mexico):	None
Subnational Ranks (Mexico):	None
Canadian SARA Status:	Special Concern/Préoccupante (April 23, 2021)
Canadian COSEWIC Status:	Special Concern (April 01, 2018)
US ESA Status:	None

Range Map

Date Generated:	March 14, 2023
Version:	1.0
Stage:	Expert Reviewed (National)
Scope:	Canadian
Metadata:	Primary Species - <i>Chrysemys picta marginata</i> Agassiz, 1857 Input Records - 40 8Trees, 1172 BISON, 343 iDigBio, 16689 iNaturalist.ca, 31 iNaturalist.org, 23128 ON Observations and Source Features, 25164 ON Observations not in Biotics, 130 VertNet; Expert Reviews - Christopher Edge, Patrick Moldowan
Comments:	None Please see spatial data for Ecoshape-level reviewer comments.
Disclaimer:	Please review our methods document before using EBAR. EBAR range data are relatively coarse scale and appropriate for screening and education purposes, but are not intended for all types of applications and analysis. The absence of data in any geographic areas does not necessarily mean that a species is not present. An ecoshape with a presence value does not necessarily mean that a species is present throughout the entire geographic area.
Presence Definitions:	(Please see Comments above for any exceptions) Present - the species is found within the ecoshape based on species observation data, Element Occurrences, Source Features, Canadian Federal Critical Habitat, or expert opinion. Presence Expected - expert opinion the species may be present, or the ecoshape overlapped with a range estimate or a habitat suitability model. Historical - all species occurrence data within the ecoshape contains observation data greater than 40 years old or an Element Occurrence (EO) that was ranked as Extirpated or Historical (EO Rank of H, H?, X or X?).
Usage Type Definitions:	(Please see Comments above for any exceptions) Breeding - the species is thought to breed within the ecoshape based on eBird Breeding and Behaviour Codes or expert opinion. Possible Breeding - the species is probably or possibly breeding within the ecoshape based on eBird, BBA or jurisdiction Breeding and Behaviour Codes, or on expert opinion.
Map Projection:	North America Albers Equal Area Conic (WKID 4269)

Credits

Suggested Citation:

NatureServe Canada, 2020. Ecosystem-based Automated Range (EBAR) for *Chrysemys picta marginata*, Version 1.0, Expert Reviewed (National) (Canadian Scope). Ottawa, Canada. Retrieved from [insert url] on [insert date]

License:

Ecosystem-based Automated Range (EBAR) Project, Copyright NatureServe Canada 2022 under CC BY 4.0 (creativecommons.org/licenses/by/4.0/)

Project Website:

www.natureserve.org/canada/ebar

Contact:

ebbar-kba@natureserve.ca

Input References:

8Trees - 8Trees Inc. 2021

BISON - United States Geological Survey (<https://bison.usgs.gov/>)

iDigBio - Integrated Digital Biocollection (<https://www.idigbio.org/>)

iNaturalist.ca - California Academy of Sciences and the National Geographic Society (<https://www.inaturalist.ca/>)

iNaturalist.org - California Academy of Sciences and the National Geographic Society (<https://www.inaturalist.org/>)

ON Observations and Source Features - Natural Heritage Information Centre, Ontario Ministry of Natural Resources and Forestry

ON Observations not in Biotics - Natural Heritage Information Centre, Ontario Ministry of Natural Resources and Forestry

VertNet - National Science Foundation (<http://vertnet.org/>)

Reviewers by Taxa:

[Reviewers by Taxa](#)