

Lithobates palustris

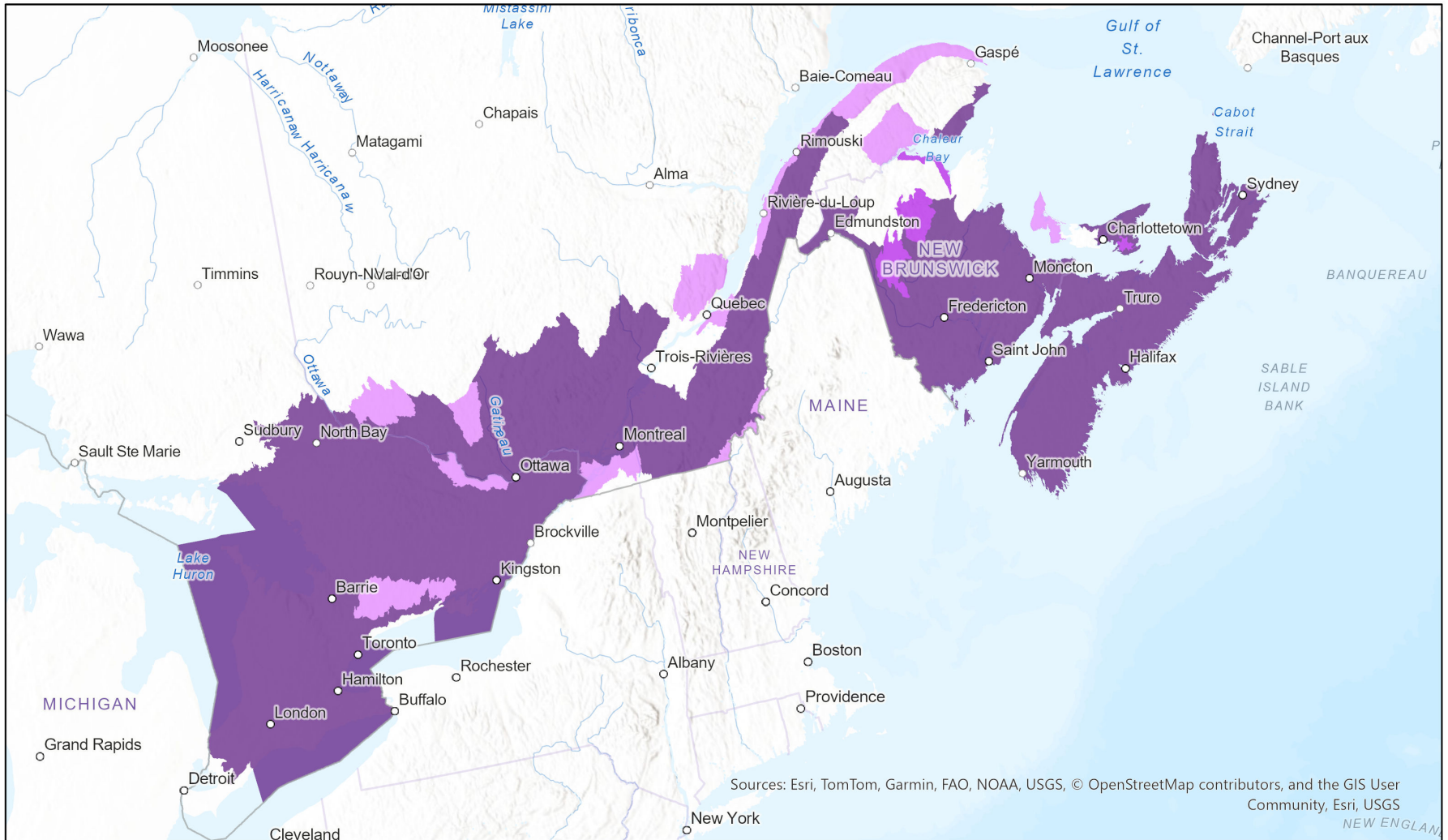


Ecosystem-based Automated Range (EBAR)

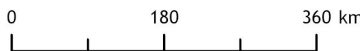
Date Generated: January 27, 2026; Version: 1.0; Stage: Expert Reviewed (National); Scope: Canadian

Synonyms Used: None

- Present
- Presence Expected
- Historical



Sources: Esri, TomTom, Garmin, FAO, NOAA, USGS, © OpenStreetMap contributors, and the GIS User Community, Esri, USGS



Input Records - 2663 ACCDC Observations (1899-2024), 1100 GBIF (1885-2024), 2600 iNaturalist.ca (1978-2025), 144 iNaturalist.ca (original coordinates for obscured records) (2005-2025), 2 iNaturalist.org (2024), 160 QC Element Occurrences (1899-2013); Expert Reviews - John Klymko, Jim Bogart, Jonathan Choquette

Map centre: 71.44° W 45.4743° N
© NatureServe Canada 2026 under CC BY 4.0

EBAR is relatively coarse scale data and not intended for all applications and analysis. Please see full disclaimer in metadata.

Ecosystem-based Automated Range (EBAR) Metadata

Species

National Scientific Name:	<i>Lithobates palustris</i> (LeConte, 1825)
Scientific Name Reference:	Frost, D.R. 2020. Amphibian Species of the World: an Online Reference. Version 6.0. American Museum of Natural History, New York, USA. Online: http://research.amnh.org/herpetology/amphibia/index.html
National English Name:	Pickerel Frog
National French Name:	Grenouille des marais
Element National ID:	168076
Element Global ID:	101857 (go to NatureServe Explorer)
Element Code:	AAABH01160
Endemism Type:	N
Canadian COSEWIC Name:	Rana palustris
Canadian COSEWIC ID:	562
English COSEWIC Common Name:	Pickerel Frog
French COSEWIC Common Name:	Grenouille des marais

Rank/Status

Global Rank:	G5 (reviewed October 05, 2025)
National Rank (Canada):	N5 (reviewed 2022)
Subnational Ranks (Canada):	NB=S5, NS=S5, ON=S4, PE=S2, QC=S4
National Rank (United States):	N5 (reviewed 1996)
Subnational Ranks (United States):	AL=S5, AR=S4, CT=S5, DC=S5, DE=S5, GA=S4, IA=S4, IL=S3S4, IN=S4, KS=SX, KY=S5, LA=S4, MA=S5, MD=S5, ME=S5, MI=S3S4, MN=S4, MO=S5, MS=S4, NC=S5, NH=S5, NJ=S5, NY=S5, OH=SNR, OK=S2S3, PA=S5, RI=S5, SC=S3, TN=S5, TX=S5, VA=S5, VT=S5, WI=S3?, WV=S5
National Rank (Mexico):	None
Subnational Ranks (Mexico):	None
Canadian SARA Status:	None
Canadian COSEWIC Status:	Not at Risk
US ESA Status:	None

Range Map

Date Generated:	January 27, 2026
Version:	1.0
Stage:	Expert Reviewed (National)
Scope:	Canadian
Metadata:	Primary Species - <i>Lithobates palustris</i> (LeConte, 1825) Input Records - 2663 ACCDC Observations (1899-2024), 1100 GBIF (1885-2024), 2600 iNaturalist.ca (1978-2025), 144 iNaturalist.ca (original coordinates for obscured records) (2005-2025), 2 iNaturalist.org (2024), 160 QC Element Occurrences (1899-2013); Expert Reviews - John Klymko, Jim Bogart, Jonathan Choquette
Comments:	None Please see spatial data for Ecoshape-level reviewer comments.
Disclaimer:	Please review our methods document before using EBAR. EBAR range data are relatively coarse scale and appropriate for screening and education purposes, but are not intended for all types of applications and analysis. The absence of data in any geographic areas does not necessarily mean that a species is not present. An ecoshape with a presence value does not necessarily mean that a species is present throughout the entire geographic area.
Presence Definitions:	(Please see Comments above for any exceptions) Present - the species is found within the ecoshape based on species observation data, Element Occurrences, Source Features, Canadian Federal Critical Habitat, or expert opinion. Presence Expected - expert opinion the species may be present, or the ecoshape overlapped with a range estimate or a habitat suitability model. Historical - all species occurrence data within the ecoshape contains observation data greater than 40 years old or an Element Occurrence (EO) that was ranked as Extirpated or Historical (EO Rank of H, H?, X or X?), or expert opinion that the species is extirpated or historical.
Usage Type Definitions:	(Please see Comments above for any exceptions) Breeding - the species is thought to breed within the ecoshape based on eBird Breeding and Behaviour Codes or expert opinion. Possible Breeding - the species is probably or possibly breeding within the ecoshape based on eBird, BBA or jurisdiction Breeding and Behaviour Codes, or on expert opinion.
Map Projection:	North America Albers Equal Area Conic (WKID 4269)

Credits

Suggested Citation:	NatureServe Canada, 2026. Ecosystem-based Automated Range (EBAR) for <i>Lithobates palustris</i> , Version 1.0, Expert Reviewed (National) (Canadian Scope). Ottawa, Canada. Retrieved from [insert url] on [insert date]
License:	Ecosystem-based Automated Range (EBAR) Project, Copyright NatureServe Canada 2026 under CC BY 4.0 (creativecommons.org/licenses/by/4.0/)
Project Website:	www.natureserve.org/canada/ebar
Contact:	ebar-kba@natureserve.ca
Input References:	ACCDC Observations - Atlantic Canada Conservation Data Centre GBIF - Global Biodiversity Information Facility iNaturalist.ca - California Academy of Sciences and the National Geographic Society iNaturalist.ca (original coordinates for obscured records) - California Academy of Sciences and the National Geographic Society iNaturalist.org - California Academy of Sciences and the National Geographic Society QC Element Occurrences - Centre de Données sur le Patrimoine Naturel du Québec
Reviewers by Taxa:	Reviewers by Taxa