

Phalaenoptilus nuttallii

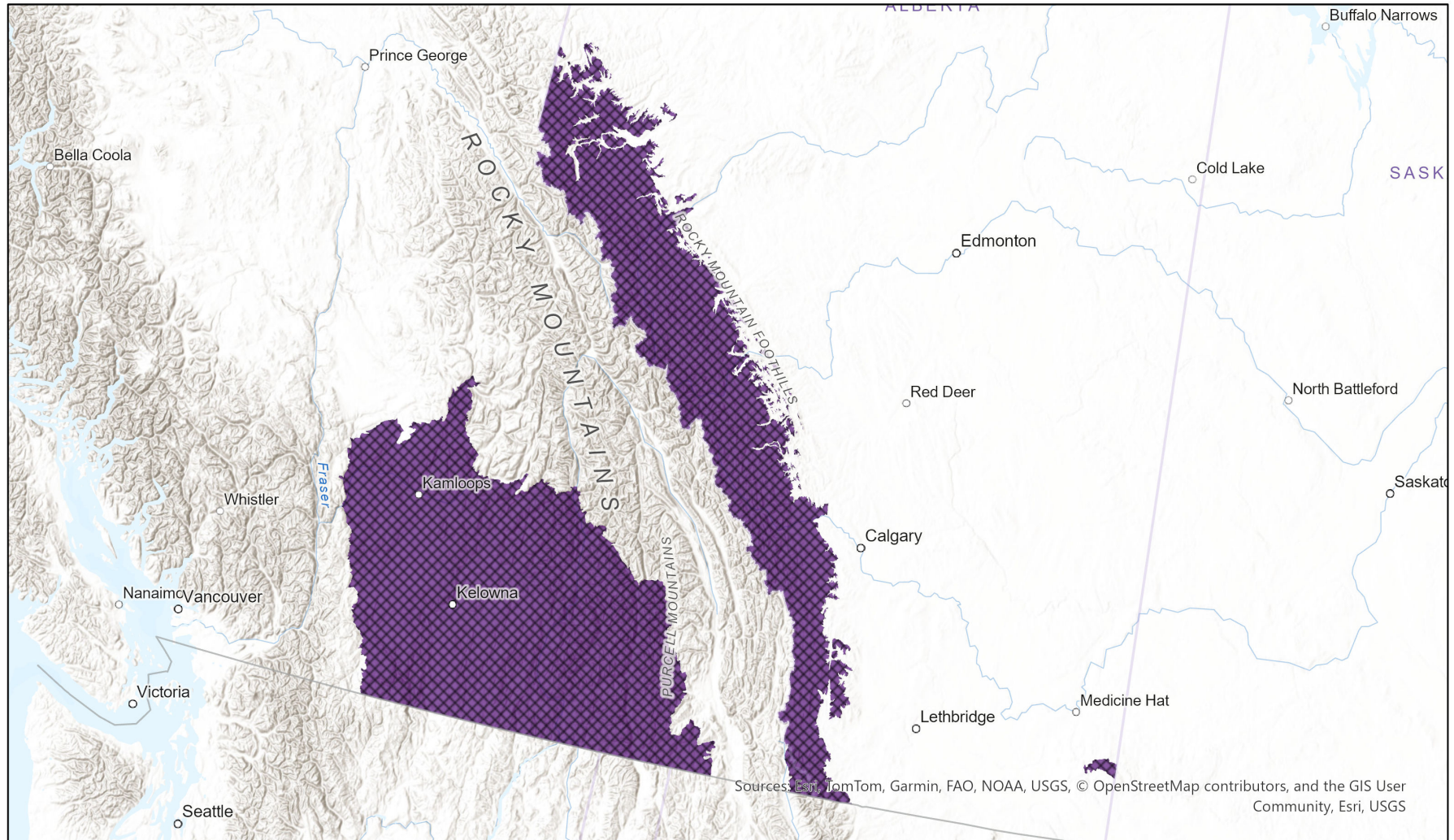


- Present
- Breeding
- Presence Expected
- Possible Breeding
- Historical

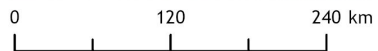
Ecosystem-based Automated Range (EBAR)

Date Generated: November 21, 2025; Version: 1.0; Stage: Expert Reviewed (National); Scope: Canadian

Synonyms Used: None



Sources: Esri, TomTom, Garmin, FAO, NOAA, USGS, © OpenStreetMap contributors, and the GIS User Community, Esri, USGS



Map centre: 116.2832°W 51.8192°N
 © NatureServe Canada 2026 under CC BY 4.0

Input Records - 15 AB Breeding Bird Atlas (2004-2005), 102 BC Breeding Bird Atlas (2008), 1 BC Survey Observations (1997), 413 Birds Canada Nature Counts (1898-2024), 1857 eBird (1963-2022), 12 FWMIS (1945-2023), 2 GBIF (1982), 111 iNaturalist.ca (1999-2025), 1 iNaturalist.ca (original coordinates for obscured records) (2024), 12 SK Breeding Bird Atlas (2017), 22 SK Element Occurrences (1905-2023), 7 SK Observation Points (1961-1991), 3 SK Source Feature Points (2016-2023), 31 SK Source Feature Polygons (1905-2019); Expert Reviews - Nathan Hentze, eBird Abundance Maps

EBAR is relatively coarse scale data and not intended for all applications and analysis. Please see full disclaimer in metadata.

Ecosystem-based Automated Range (EBAR) Metadata

Species

National Scientific Name:	<i>Phalaenoptilus nuttallii</i> (Audubon, 1844)
Scientific Name Reference:	American Ornithologists' Union (AOU). 1998. Check-list of North American birds. Seventh edition. American Ornithologists' Union, Washington, D.C. [as modified by subsequent supplements and corrections published in <i>The Auk</i>]. Also available online: http://www.aou.org/ .
National English Name:	Common Poorwill
National French Name:	Engoulevent de Nuttall
Element National ID:	167953
Element Global ID:	101533 (go to NatureServe Explorer)
Element Code:	ABNTA04010
Endemism Type:	N
Canadian COSEWIC Name:	
Canadian COSEWIC ID:	496
English COSEWIC Common Name:	Common Poorwill
French COSEWIC Common Name:	Engoulevent de Nuttall

Rank/Status

Global Rank:	G5 (reviewed April 09, 2016)
National Rank (Canada):	N4?B,NUM (reviewed 2023)
Subnational Ranks (Canada):	AB=SUB, BC=S4?B, SK=S3B
National Rank (United States):	N5B,NNRN (reviewed 1997)
Subnational Ranks (United States):	AZ=S5, CA=SNR, CO=S5, ID=S4B, KS=S3B, MT=S4B, ND=S4, NE=S4, NM=S5B,S5N, NN=S5B, NV=S4B, OK=S2B, OR=S5B, SD=S1B, TX=S4B, UT=S2, WA=S3S4B, WY=S5B,S5N
National Rank (Mexico):	None
Subnational Ranks (Mexico):	None
Canadian SARA Status:	None
Canadian COSEWIC Status:	Data Deficient
US ESA Status:	None

Range Map

Date Generated:	November 21, 2025
Version:	1.0
Stage:	Expert Reviewed (National)
Scope:	Canadian
Metadata:	Primary Species - <i>Phalaenoptilus nuttallii</i> (Audubon, 1844) Input Records - 15 AB Breeding Bird Atlas (2004-2005), 102 BC Breeding Bird Atlas (2008), 1 BC Survey Observations (1997), 413 Birds Canada Nature Counts (1898-2024), 1857 eBird (1963-2022), 12 FWMIS (1945-2023), 2 GBIF (1982), 111 iNaturalist.ca (1999-2025), 1 iNaturalist.ca (original coordinates for obscured records) (2024), 12 SK Breeding Bird Atlas (2017), 22 SK Element Occurrences (1905-2023), 7 SK Observation Points (1961-1991), 3 SK Source Feature Points (2016-2023), 31 SK Source Feature Polygons (1905-2019); Expert Reviews - Nathan Hentze, eBird Abundance Maps
Comments:	None Please see spatial data for Ecoshape-level reviewer comments.
Disclaimer:	Please review our methods document before using EBAR. EBAR range data are relatively coarse scale and appropriate for screening and education purposes, but are not intended for all types of applications and analysis. The absence of data in any geographic areas does not necessarily mean that a species is not present.

An ecoshape with a presence value does not necessarily mean that a species is present throughout the entire geographic area.

Presence Definitions:

(Please see Comments above for any exceptions)

Present - the species is found within the ecoshape based on species observation data, Element Occurrences, Source Features, Canadian Federal Critical Habitat, or expert opinion.

Presence Expected - expert opinion the species may be present, or the ecoshape overlapped with a range estimate or a habitat suitability model.

Historical - all species occurrence data within the ecoshape contains observation data greater than 40 years old or an Element Occurrence (EO) that was ranked as Extirpated or Historical (EO Rank of H, H?, X or X?), or expert opinion that the species is extirpated or historical.

Usage Type Definitions:

(Please see Comments above for any exceptions)

Breeding - the species is thought to breed within the ecoshape based on eBird Breeding and Behaviour Codes or expert opinion.

Possible Breeding - the species is probably or possibly breeding within the ecoshape based on eBird, BBA or jurisdiction Breeding and Behaviour Codes, or on expert opinion.

Map Projection:

North America Albers Equal Area Conic (WKID 4269)

Credits

Suggested Citation:

NatureServe Canada, 2026. Ecosystem-based Automated Range (EBAR) for *Phalaenoptilus nuttallii*, Version 1.0, Expert Reviewed (National) (Canadian Scope). Ottawa, Canada. Retrieved from [insert url] on [insert date]

License:

Ecosystem-based Automated Range (EBAR) Project, Copyright NatureServe Canada 2026 under CC BY 4.0 (creativecommons.org/licenses/by/4.0/)

Project Website:

www.natureserve.org/canada/ebars

Contact:

ebars-kba@natureserve.ca

Input References:

AB Breeding Bird Atlas - [Alberta Breeding Bird Atlas. 2005. Data accessed from NatureCounts, a node of the Avian Knowledge Network, Birds Canada. Available: https://www.naturecounts.ca/](#)

BC Breeding Bird Atlas - Birds Canada, Canadian Wildlife Service, British Columbia Ministry of Environment, BC Nature, BC Field Ornithologists, Biodiversity Centre for Wildlife Studies, Louisiana Pacific, Pacific Wildlife Foundation, The, and Canadian Wildlife Service. 2026. "British Columbia Breeding Bird Atlas (2008-2012): highest breeding evidence per square". Data accessed from NatureCounts, Birds Canada. 10.71842/h3by-9r85

BC Survey Observations - [British Columbia Conservation Data Centre](#)

Birds Canada Nature Counts - [Birds Canada. 2024. NatureCounts data. https://naturecounts.ca. Accessed on 8 Feb. 2024. And Accessed on 24 Dec. 2024.](#)

eBird - [eBird Basic Dataset. Version: EBD_relMar-2022. Cornell Lab of Ornithology, Ithaca, New York. Mar 2022. eBird: An online database of bird distribution and abundance \[web application\]. eBird, Cornell Lab of Ornithology, Ithaca, New York. Available: http://www.ebird.org](#)

FWMIS - Fish and Wildlife Management Information System (FWMIS), Alberta Environment and Parks.

GBIF - [Global Biodiversity Information Facility](#)

iNaturalist.ca - [California Academy of Sciences and the National Geographic Society](#)

iNaturalist.ca (original coordinates for obscured records) - [California Academy of Sciences and the National Geographic Society](#)

SK Breeding Bird Atlas - Saskatchewan Breeding Bird Atlas. 2017. Data accessed from NatureCounts, a node of the Avian Knowledge Network, Birds Canada. Available: <https://www.naturecounts.ca/>

SK Element Occurrences - Saskatchewan Conservation Data Centre

SK Observation Points - Saskatchewan Conservation Data Centre

SK Source Feature Points - Saskatchewan Conservation Data Centre

SK Source Feature Polygons - Saskatchewan Conservation Data Centre

Reviewers by Taxa:

[Reviewers by Taxa](#)