

Zonotrichia querula

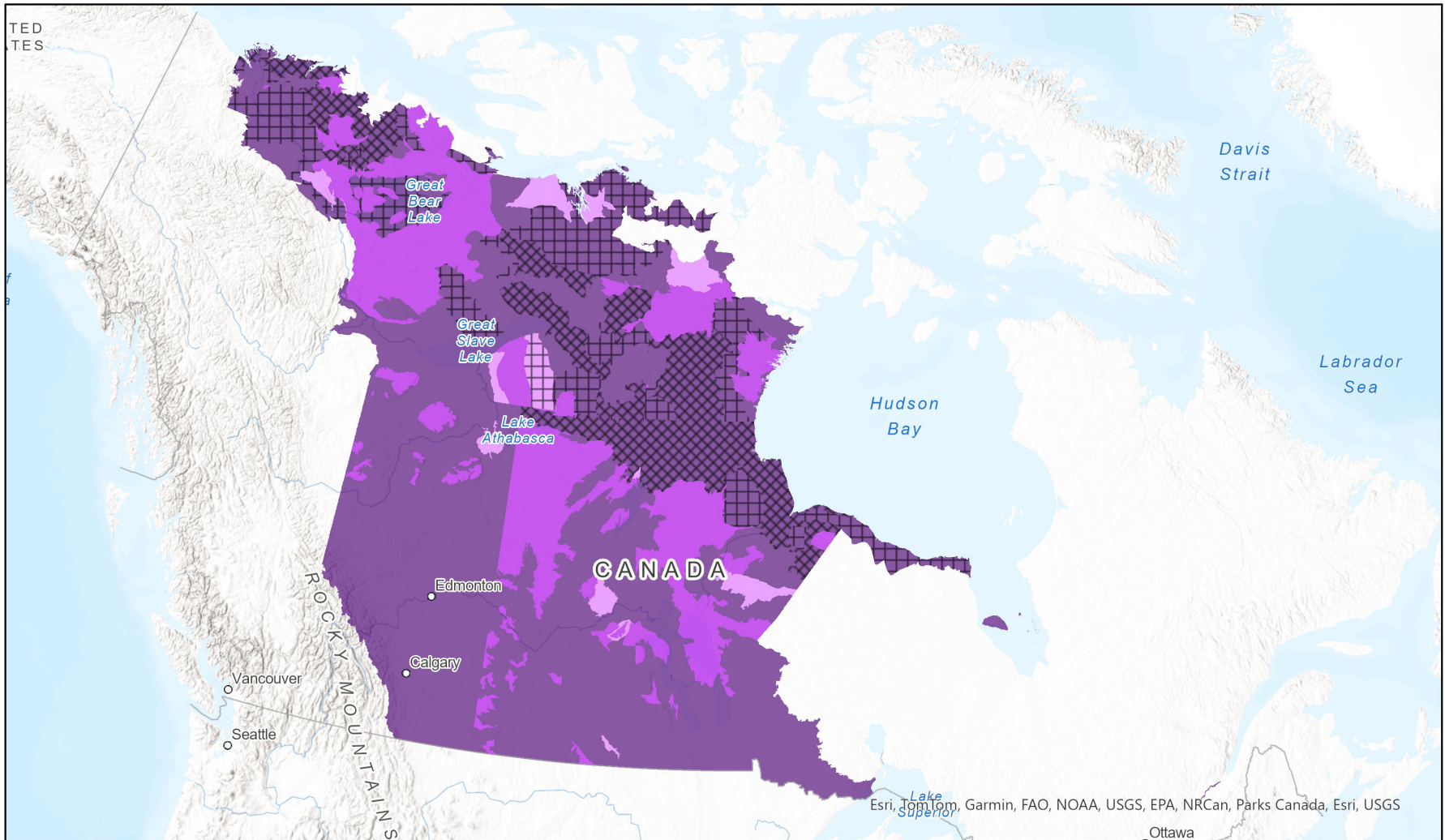


Ecosystem-based Automated Range (EBAR)

Date Generated: October 15, 2024; Version: 1.0; Stage: Expert Reviewed (National); Scope: Canadian

Synonyms Used: None

- Present
- Breeding
- Presence Expected
- Possible Breeding
- Historical



0 460 920 km

Input Records - 136 AB Breeding Bird Atlas, 7 ACCDC Observations, 2 BC Survey Observations, 1 BISON, 25429 eBird, 38 FWMIS, 127 iDigBio, 889 iNaturalist.ca, 91 iNaturalist.ca (original coordinates for obscured records), 302 MB Breeding Bird Atlas, 92 MB Element Occurrences, 1119 MB Source Feature Polygons, 4 NCC Endemics Records, 12088 NCC GBIF Download, 6 ON Breeding Bird Atlas, 111 ON Observations and Source Features, 33 SK Breeding Bird Atlas, 8 SK Element Occurrences, 50 SK Observation Points, 92 SK Source Feature Points, 188 SK Source Feature Polygons; Expert ... (see metadata for additional input details)

Map centre: 96.8001° W 59.9625° N
 © NatureServe Canada 2020 under CC BY 4.0
 EBAR is relatively coarse scale data and not intended for all applications and analysis. Please see full disclaimer in metadata.

Ecosystem-based Automated Range (EBAR) Metadata

Species

National Scientific Name:	<i>Zonotrichia querula</i> (Nuttall, 1840)
Scientific Name Reference:	American Ornithologists' Union (AOU). 1998. Check-list of North American birds. Seventh edition. American Ornithologists' Union, Washington, D.C. [as modified by subsequent supplements and corrections published in <i>The Auk</i>]. Also available online: http://www.aou.org/ .
National English Name:	Harris's Sparrow
National French Name:	Bruant à face noire
Element National ID:	161875
Element Global ID:	101459 (go to NatureServe Explorer)
Element Code:	ABPBXA4050
Endemism Type:	B
Canadian COSEWIC Name:	
Canadian COSEWIC ID:	1348

Rank/Status

Global Rank:	G5 (reviewed April 10, 2016)
National Rank (Canada):	N4B,NUN,N5M (reviewed 2023)
Subnational Ranks (Canada):	AB=SUM, BC=SUM, MB=S3B, NT=S3, NU=S4B, ON=S2B, SK=SUB,S5M
National Rank (United States):	N5N (reviewed 1997)
Subnational Ranks (United States):	AK=SNA, AL=SNRN, AR=S3N, AZ=S1N, CA=SNA, CO=S4N, IA=S4N, ID=SNA, IL=SNA, IN=S1N, KS=S4N, LA=S2N, MI=SNRN, MN=SNRN, MO=SNRN, MT=SNA, ND=SNA, NE=SNRN, NM=S4N, NN=S2S3N, OK=SNRN, OR=SNA, SD=SNA, TX=S4, UT=S3N, WA=SNA, WI=SNA, WY=S5M
National Rank (Mexico):	None
Subnational Ranks (Mexico):	None
Canadian SARA Status:	Special Concern/Préoccupante (February 03, 2023)
Canadian COSEWIC Status:	Special Concern (April 28, 2017)
US ESA Status:	None

Range Map

Date Generated:	October 15, 2024
Version:	1.0
Stage:	Expert Reviewed (National)
Scope:	Canadian
Metadata:	Primary Species - <i>Zonotrichia querula</i> (Nuttall, 1840) Input Records - 136 AB Breeding Bird Atlas, 7 ACCDC Observations, 2 BC Survey Observations, 1 BISON, 25429 eBird, 38 FWMIS, 127 iDigBio, 889 iNaturalist.ca, 91 iNaturalist.ca (original coordinates for obscured records), 302 MB Breeding Bird Atlas, 92 MB Element Occurrences, 1119 MB Source Feature Polygons, 4 NCC Endemics Records, 12088 NCC GBIF Download, 6 ON Breeding Bird Atlas, 111 ON Observations and Source Features, 33 SK Breeding Bird Atlas, 8 SK Element Occurrences, 50 SK Observation Points, 92 SK Source Feature Points, 188 SK Source Feature Polygons; Expert Reviews - Nathan Hentze, Pamela Sinclair, Pamela Sinclair
Comments:	None Please see spatial data for Ecoshape-level reviewer comments.
Disclaimer:	Please review our methods document before using EBAR. EBAR range data are relatively coarse scale and appropriate for screening and education purposes, but are not intended for all types of applications and analysis.

The absence of data in any geographic areas does not necessarily mean that a species is not present.

An ecoshape with a presence value does not necessarily mean that a species is present throughout the entire geographic area.

Presence Definitions:

(Please see Comments above for any exceptions)

Present - the species is found within the ecoshape based on species observation data, Element Occurrences, Source Features, Canadian Federal Critical Habitat, or expert opinion.

Presence Expected - expert opinion the species may be present, or the ecoshape overlapped with a range estimate or a habitat suitability model.

Historical - all species occurrence data within the ecoshape contains observation data greater than 40 years old or an Element Occurrence (EO) that was ranked as Extirpated or Historical (EO Rank of H, H?, X or X?), or expert opinion that the species is extirpated or historical.

Usage Type Definitions:

(Please see Comments above for any exceptions)

Breeding - the species is thought to breed within the ecoshape based on eBird Breeding and Behaviour Codes or expert opinion.

Possible Breeding - the species is probably or possibly breeding within the ecoshape based on eBird, BBA or jurisdiction Breeding and Behaviour Codes, or on expert opinion.

Map Projection:

North America Albers Equal Area Conic (WKID 4269)

Credits

Suggested Citation:

NatureServe Canada, 2020. Ecosystem-based Automated Range (EBAR) for *Zonotrichia querula*, Version 1.0, Expert Reviewed (National) (Canadian Scope). Ottawa, Canada. Retrieved from [insert url] on [insert date]

License:

Ecosystem-based Automated Range (EBAR) Project, Copyright NatureServe Canada 2022 under CC BY 4.0 (creativecommons.org/licenses/by/4.0/)

Project Website:

www.natureserve.org/canada/ebar

Contact:

ebbar-kba@natureserve.ca

Input References:

AB Breeding Bird Atlas - Alberta Breeding Bird Atlas. 2005. Data accessed from NatureCounts, a node of the Avian Knowledge Network, Birds Canada. Available: <https://www.naturecounts.ca/>

ACCDC Observations - Atlantic Canada Conservation Data Centre

BC Survey Observations - British Columbia Conservation Data Centre

BISON - [United States Geological Survey](#)

eBird - [eBird Basic Dataset. Version: EBD_relMar-2022. Cornell Lab of Ornithology, Ithaca, New York. Mar 2022. eBird: An online database of bird distribution and abundance \[web application\]. eBird, Cornell Lab of Ornithology, Ithaca, New York. Available: <http://www.ebird.org>](#)

FWMIS - Fish and Wildlife Management Information System (FWMIS), Alberta Environment and Parks.

iDigBio - [Integrated Digital Biocollection](#)

iNaturalist.ca - [California Academy of Sciences and the National Geographic Society](#)

iNaturalist.ca (original coordinates for obscured records) - [California Academy of Sciences and the National Geographic Society](#)

MB Breeding Bird Atlas - Manitoba Breeding Bird Atlas. 2014. Data accessed from NatureCounts, a node of the Avian Knowledge Network, Birds Canada. Available: <https://www.naturecounts.ca/>

MB Element Occurrences - Manitoba Conservation Data Centre

MB Source Feature Polygons - Manitoba Conservation Data Centre

NCC Endemics Records - Nature Conservancy of Canada

NCC GBIF Download - Nature Conservancy of Canada

ON Breeding Bird Atlas - Birds Canada, Environment Canada's Canadian Wildlife Service, Ontario Nature, Ontario Field Ornithologists and Ontario Ministry of Natural Resources. 2008. Ontario Breeding Bird Atlas Database. Data accessed from NatureCounts, a node of the Avian Knowledge Network, Birds Canada.

ON Observations and Source Features - Natural Heritage Information Centre, Ontario Ministry of Natural Resources and Forestry

SK Breeding Bird Atlas - Saskatchewan Breeding Bird Atlas. 2017. Data accessed from NatureCounts, a node of the Avian Knowledge Network, Birds Canada. Available: <https://www.naturecounts.ca/>

SK Element Occurrences - Saskatchewan Conservation Data Centre

SK Observation Points - Saskatchewan Conservation Data Centre

SK Source Feature Points - Saskatchewan Conservation Data Centre

SK Source Feature Polygons - Saskatchewan Conservation Data Centre

Reviewers by Taxa:

[Reviewers by Taxa](#)