

Cynomys ludovicianus

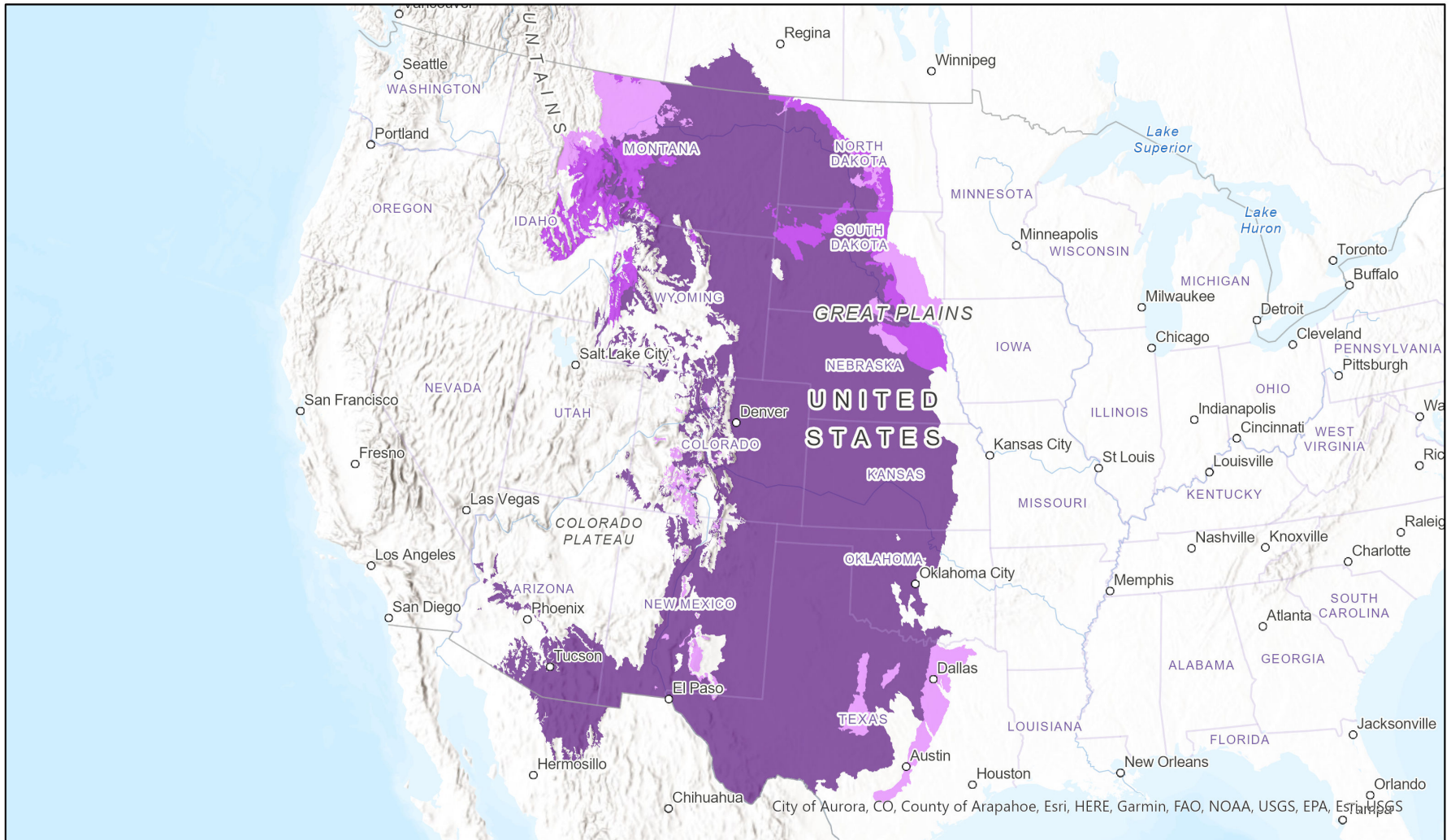


- Present
- Presence Expected
- Historical

Ecosystem-based Automated Range (EBAR)

Date Generated: August 5, 2022; Version: 1.0; Stage: Expert Reviewed; Scope: Global

Synonyms Used: None



0 420 840 km

Input Records - 6 AZ Element Occurrences, 1261 BISON, 3 Ecoengine, 3842 GBIF, 131 iDigBio, 232 iNaturalist.ca, 4503 iNaturalist.org, 10809 MT Observation Points, 102 MT Ranges, 31 SK Element Occurrences, 9 SK Source Feature Points, 190 SK Source Feature Polygons, 6098 US Element Occurrences, 68 VertNet; Expert Reviews

Map centre: 105.4375° W 39.6835° N
 © NatureServe Canada 2020 under CC BY 4.0

EBAR is relatively coarse scale data and not intended for all applications and analysis. Please see full disclaimer in metadata.

- Colleen Matzke

Ecosystem-based Automated Range (EBAR) Metadata

Species

National Scientific Name:	<i>Cynomys ludovicianus</i> (Ord, 1815)
Scientific Name Reference:	Wilson, D. E., and D. M. Reeder (editors). 1993. Mammal species of the world: a taxonomic and geographic reference. Second edition. Smithsonian Institution Press, Washington, DC. xviii + 1206 pp. Available online at: http://www.nmnh.si.edu/msw/ .
National English Name:	Black-tailed Prairie Dog
National French Name:	Chien de prairie
Element National ID:	168668
Element Global ID:	100941 (go to NatureServe Explorer)
Element Code:	AMAFB06010
Endemism Type:	N

Rank/Status

Global Rank:	G4 (reviewed April 04, 2016)
National Rank (Canada):	N2 (reviewed 2016)
Subnational Ranks (Canada):	AB=SNA, SK=S2
National Rank (United States):	N4 (reviewed 2006)
Subnational Ranks (United States):	AZ=SX,S1, CO=S3, KS=S3, MT=S3, ND=SU, NE=S3, NM=S2, OK=S3, SD=S4, TX=S3, WY=S2
National Rank (Mexico):	None
Subnational Ranks (Mexico):	None
Canadian SARA Status:	Threatened/Menacée (June 05, 2003)
Canadian COSEWIC Status:	Threatened (November 25, 2011)
US ESA Status:	None

Range Map

Date Generated:	August 05, 2022
Version:	1.0
Stage:	Expert Reviewed
Scope:	Global
Metadata:	Primary Species - <i>Cynomys ludovicianus</i> (Ord, 1815) Input Records - 6 AZ Element Occurrences, 1261 BISON, 3 Ecoengine, 3842 GBIF, 131 iDigBio, 232 iNaturalist.ca, 4503 iNaturalist.org, 10809 MT Observation Points, 102 MT Ranges, 31 SK Element Occurrences, 9 SK Source Feature Points, 190 SK Source Feature Polygons, 6098 US Element Occurrences, 68 VertNet; Expert Reviews - Colleen Matzke
Comments:	Please see spatial data for reviewer comments.
Disclaimer:	Please review our methods document before using EBAR. EBAR range data are relatively coarse scale and appropriate for screening and education purposes, but are not intended for all types of applications and analysis. The absence of data in any geographic areas does not necessarily mean that a species is not present. An ecoshape with a presence value does not necessarily mean that a species is present throughout the entire geographic area.
Presence Definitions:	Present - the species is found within the ecoshape based on species observation data, Element Occurrences, Source Features, Canadian Federal Critical Habitat, or expert opinion. Presence Expected - expert opinion the species may be present, or the ecoshape overlapped with a range estimate or a habitat suitability model. Historical - all species occurrence data within the ecoshape contains observation data greater than 40 years old or an Element Occurrence (EO) that was ranked as Extirpated or Historical (EO Rank of H, H?, X or X?).
Usage Type Definitions:	Breeding - the species is thought to breed within the ecoshape based on eBird Breeding and Behaviour Codes or expert opinion. Possible Breeding - the species is probably or possibly breeding within the ecoshape based on eBird Breeding and Behaviour Codes or expert opinion. Migration - the species is thought to migrate within the ecoshape based on eBird Breeding and Behaviour Codes or expert opinion.
Map Projection:	North America Albers Equal Area Conic (WKID 4269)

Credits

- Suggested Citation:** NatureServe Canada, 2020. Ecosystem-based Automated Range (EBAR) for *Cynomys ludovicianus*, Version 1.0, Expert Reviewed (Global Scope). Ottawa, Canada. Retrieved from [insert url] on [insert date]
- License:** Ecosystem-based Automated Range (EBAR) Project, Copyright NatureServe Canada 2022 under CC BY 4.0 (creativecommons.org/licenses/by/4.0/)
- Project Website:** www.natureserve.org/canada/ebar
- Contact:** ebar-kba@natureserve.ca
- Input References:**
- AZ Element Occurrences - Arizona Natural Heritage Program
 - BISON - United States Geological Survey (<https://bison.usgs.gov/>)
 - Ecoengine - Berkeley Ecoinformatics Engine (<https://ecoengine.berkeley.edu/>)
 - GBIF - Global Biodiversity Information Facility (<https://www.gbif.org>)
 - iDigBio - Integrated Digital Biocollection (<https://www.idigbio.org/>)
 - iNaturalist.ca - California Academy of Sciences and the National Geographic Society (<https://www.inaturalist.ca/>)
 - iNaturalist.org - California Academy of Sciences and the National Geographic Society (<https://www.inaturalist.org/>)
 - MT Observation Points - Montana Natural Heritage Program
 - MT Ranges - Montana Natural Heritage Program
 - SK Element Occurrences - Saskatchewan Conservation Data Centre
 - SK Source Feature Points - Saskatchewan Conservation Data Centre
 - SK Source Feature Polygons - Saskatchewan Conservation Data Centre
 - US Element Occurrences - NatureServe and its Natural Heritage Programs
 - VertNet - National Science Foundation (<http://vertnet.org/>)
- Reviewers by Taxa:** [Reviewers by Taxa](#)