

Microtus pinetorum

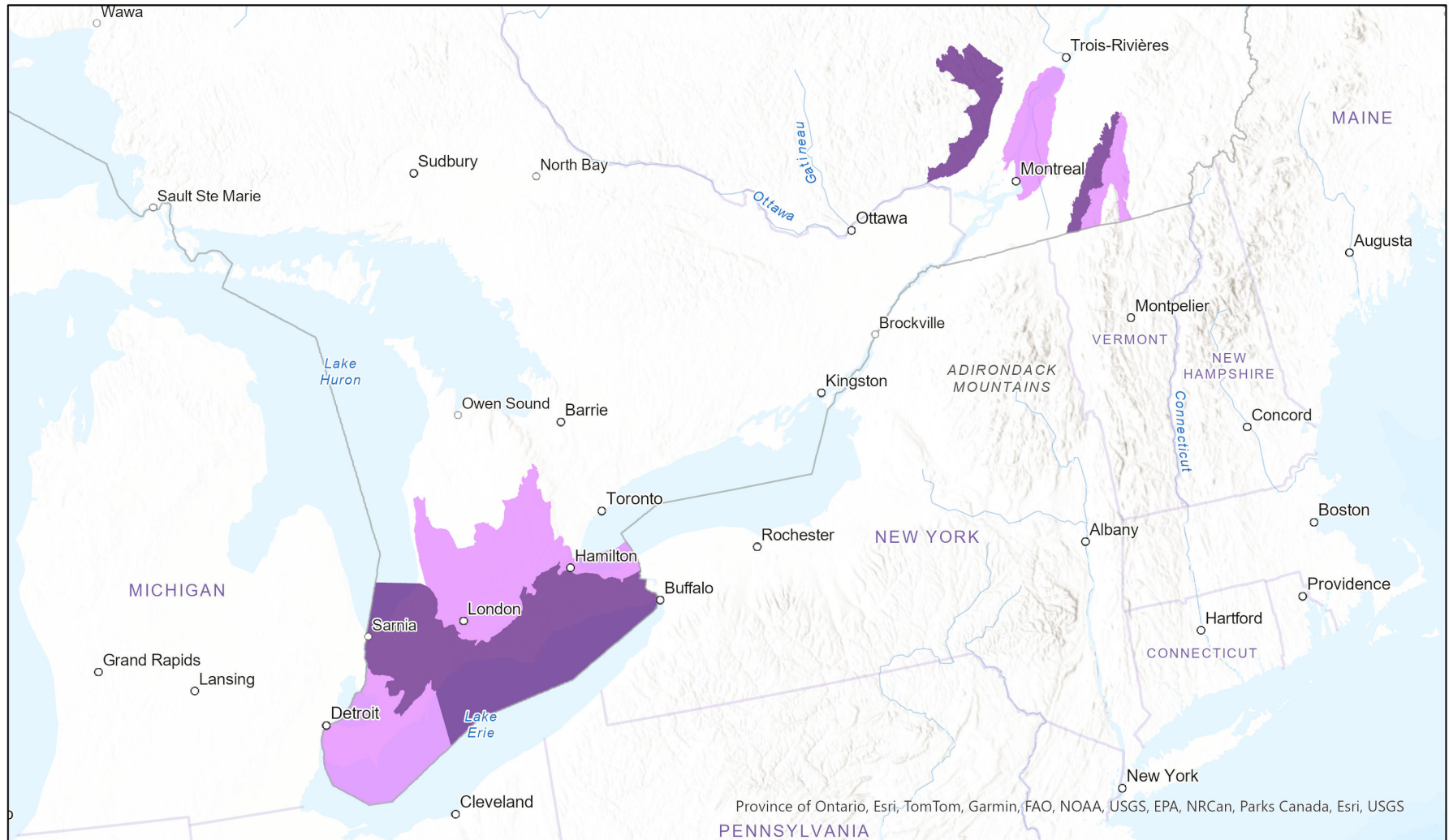


Ecosystem-based Automated Range (EBAR)

Date Generated: February 22, 2023; Version: 1.0; Stage: Expert Reviewed (National); Scope: Canadian

Synonyms Used: None

- Present
- Presence Expected
- Historical



0 110 220 km

Input Records - 52 BISON, 74 GBIF, 84 iDigBio, 1 iNaturalist.ca, 47 ON Element Occurrences, 76 ON Observations and Source Features, 2 ON Observations not in Biotics, 5 QC Element Occurrences, 64 VertNet; Expert Reviews - Mike Burrell, 1 Anonymous

Map centre: 77.6879° W 44.1392° N
© NatureServe Canada 2020 under CC BY 4.0

EBAR is relatively coarse scale data and not intended for all applications and analysis. Please see full disclaimer in metadata.

Ecosystem-based Automated Range (EBAR) Metadata

Species

National Scientific Name:	<i>Microtus pinetorum</i> (Le Conte, 1830)
Scientific Name Reference:	Wilson, D. E., and D. M. Reeder (editors). 1993. Mammal species of the world: a taxonomic and geographic reference. Second edition. Smithsonian Institution Press, Washington, DC. xviii + 1206 pp. Available online at: http://www.nmnh.si.edu/msw/ .
National English Name:	Woodland Vole
National French Name:	Campagnol sylvestre
Element National ID:	168770
Element Global ID:	100495 (go to NatureServe Explorer)
Element Code:	AMAFF11150
Endemism Type:	N
Canadian COSEWIC Name:	
Canadian COSEWIC ID:	526

Rank/Status

Global Rank:	G5 (reviewed April 04, 2016)
National Rank (Canada):	N3 (reviewed 2017)
Subnational Ranks (Canada):	ON=S3?, QC=S2
National Rank (United States):	N5 (reviewed 1996)
Subnational Ranks (United States):	AL=S5, AR=S5, CT=S5, DC=S4, DE=S4, FL=SNR, GA=S5, IA=S3, IL=S5, IN=S4, KS=S5, KY=S5, LA=S4, MA=S5, MD=S5, ME=S1, MI=S3S4, MN=S3, MO=S4, MS=S5, NC=S5, NE=S1, NH=S4, NJ=S5, NY=S5, OH=SNR, OK=SNR, PA=S5, RI=SU, SC=S4S5, TN=S5, TX=S3, VA=S5, VT=S3, WI=S2, WV=S4
National Rank (Mexico):	None
Subnational Ranks (Mexico):	None
Canadian SARA Status:	Special Concern/Préoccupante (June 05, 2003)
Canadian COSEWIC Status:	Special Concern (November 26, 2010)
US ESA Status:	None

Range Map

Date Generated:	February 22, 2023
Version:	1.0
Stage:	Expert Reviewed (National)
Scope:	Canadian
Metadata:	Primary Species - <i>Microtus pinetorum</i> (Le Conte, 1830) Input Records - 52 BISON, 74 GBIF, 84 iDigBio, 1 iNaturalist.ca, 47 ON Element Occurrences, 76 ON Observations and Source Features, 2 ON Observations not in Biotics, 5 QC Element Occurrences, 64 VertNet; Expert Reviews - Mike Burrell, 1 Anonymous
Comments:	None Please see spatial data for Ecoshape-level reviewer comments.
Disclaimer:	Please review our methods document before using EBAR. EBAR range data are relatively coarse scale and appropriate for screening and education purposes, but are not intended for all types of applications and analysis. The absence of data in any geographic areas does not necessarily mean that a species is not present. An ecoshape with a presence value does not necessarily mean that a species is present throughout the entire geographic area.
Presence Definitions:	(Please see Comments above for any exceptions) Present - the species is found within the ecoshape based on species observation data, Element Occurrences, Source Features, Canadian Federal Critical Habitat, or expert opinion. Presence Expected - expert opinion the species may be present, or the ecoshape overlapped with a range estimate or a habitat suitability model. Historical - all species occurrence data within the ecoshape contains observation data greater than 40 years old or an Element Occurrence (EO) that was ranked as Extirpated or Historical (EO Rank of H, H?, X or X?).
Usage Type Definitions:	(Please see Comments above for any exceptions) Breeding - the species is thought to breed within the ecoshape based on eBird Breeding and Behaviour Codes or expert opinion. Possible Breeding - the species is probably or possibly breeding within the ecoshape based on eBird, BBA or jurisdiction Breeding and Behaviour Codes, or on expert opinion.
Map Projection:	North America Albers Equal Area Conic (WKID 4269)

Credits

Suggested Citation:	NatureServe Canada, 2020. Ecosystem-based Automated Range (EBAR) for <i>Microtus pinetorum</i> , Version 1.0, Expert Reviewed (National) (Canadian Scope). Ottawa, Canada. Retrieved from [insert url] on [insert date]
License:	Ecosystem-based Automated Range (EBAR) Project, Copyright NatureServe Canada 2022 under CC BY 4.0 (creativecommons.org/licenses/by/4.0/)
Project Website:	www.natureserve.org/canada/ebar
Contact:	ebar-kba@natureserve.ca
Input References:	BISON - United States Geological Survey GBIF - Global Biodiversity Information Facility iDigBio - Integrated Digital Biocollection iNaturalist.ca - California Academy of Sciences and the National Geographic Society ON Element Occurrences - Natural Heritage Information Centre, Ontario Ministry of Natural Resources and Forestry ON Observations and Source Features - Natural Heritage Information Centre, Ontario Ministry of Natural Resources and Forestry QC Element Occurrences - Centre de Données sur le Patrimoine Naturel du Québec VertNet - National Science Foundation
Reviewers by Taxa:	Reviewers by Taxa