

Glyptemys insculpta

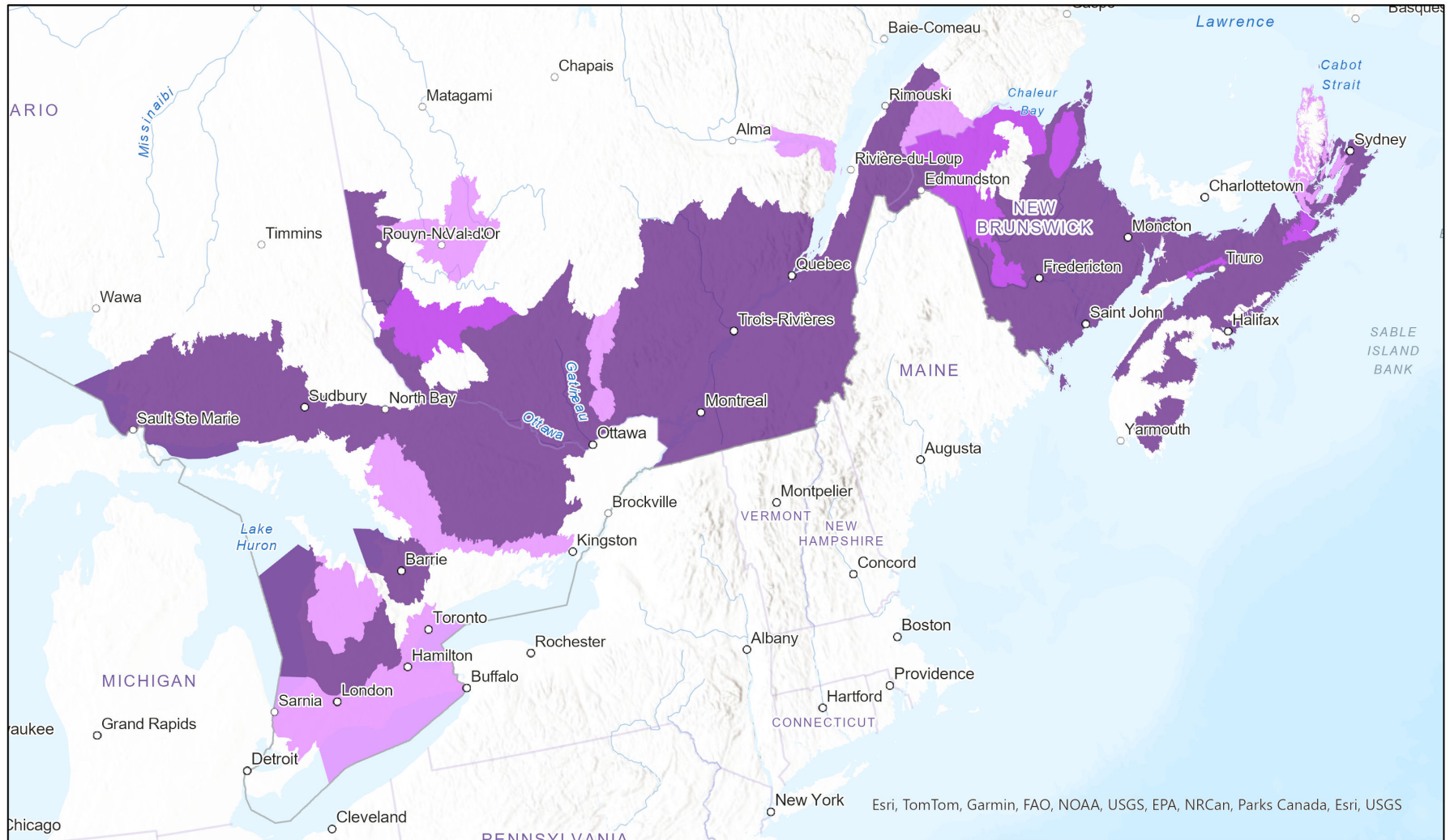


- Present
- Presence Expected
- Historical

Ecosystem-based Automated Range (EBAR)

Date Generated: March 27, 2024; Version: 1.0; Stage: Expert Reviewed (National); Scope: Canadian

Synonyms Used: *Clemmys insculpta*



0 175 350 km

Input Records - 3373 ACCDC Observations, 120 BISON, 149 GBIF, 36 iDigBio, 272 iNaturalist.ca (original coordinates for obscured records), 19 iNaturalist.org, 75 ON Element Occurrences, 14729 ON Observations and Source Features, 444 QC Element Occurrences, 32 VertNet; Expert Reviews - Sylvain Giguere, Christopher Edge, Damien Mullin, Patrick Moldowan, Jeffie McNeil, Ryan Wolfe, 4 Anonymous

Map centre: 73.1415° W 45.3144° N
 © NatureServe Canada 2020 under CC BY 4.0

EBAR is relatively coarse scale data and not intended for all applications and analysis. Please see full disclaimer in metadata.

Ecosystem-based Automated Range (EBAR) Metadata

Species

National Scientific Name:	<i>Glyptemys insculpta</i> (Le Conte, 1830)
Scientific Name Reference:	Turtle Taxonomy Working Group (TTWG) [Rhodin, A. G. J., J. B. Iverson, R. Bour, U. Fritz, A. Georges, H. B. Shaffer, and P. P. van Dijk]. 2021. Turtles of the World: Annotated Checklist and Atlas of Taxonomy, Synonymy, Distribution, and Conservation Status (9th Ed.). In: Rhodin, A. G. J., J. B. Iverson, P. P. van Dijk, C. B. Stanford, E. V. Goode, K. A. Buhlmann, and R. A. Mittermeier (Eds.). Conservation Biology of Freshwater Turtles and Tortoises: A Compilation Project of the IUCN/SSC Tortoise and Freshwater Turtle Specialist Group. Chelonian Research Monographs 8:1-472. doi: 10.3854/crm.8.checklist.atlas.v9.2021.
National English Name:	Wood Turtle
National French Name:	Tortue des bois
Element National ID:	167966
Element Global ID:	100280 (go to NatureServe Explorer)
Element Code:	ARAAD02020
Endemism Type:	N
Canadian COSEWIC Name:	
Canadian COSEWIC ID:	286

Rank/Status

Global Rank:	G2G3 (reviewed January 17, 2024)
National Rank (Canada):	N3 (reviewed 2024)
Subnational Ranks (Canada):	NB=S2S3, NS=S2, ON=S2, QC=S3
National Rank (United States):	N3 (reviewed 2010)
Subnational Ranks (United States):	CT=S3, DC=SH, IA=S1, MA=S3, MD=S2S3, ME=S4, MI=S2, MN=S2, NH=S3, NJ=S2, NY=S3, PA=S3S4, RI=S2, VA=S2, VT=S3, WI=S3, WV=S3
National Rank (Mexico):	None
Subnational Ranks (Mexico):	None
Canadian SARA Status:	Threatened/Menacée (February 23, 2010)
Canadian COSEWIC Status:	Threatened (November 01, 2018)
US ESA Status:	None

Range Map

Date Generated:	March 27, 2024
Version:	1.0
Stage:	Expert Reviewed (National)
Scope:	Canadian
Metadata:	Primary Species - <i>Glyptemys insculpta</i> (Le Conte, 1830); Synonyms - <i>Clemmys insculpta</i> (Le Conte, 1830) Input Records - 3373 ACCDC Observations, 120 BISON, 149 GBIF, 36 iDigBio, 272 iNaturalist.ca (original coordinates for obscured records), 19 iNaturalist.org, 75 ON Element Occurrences, 14729 ON Observations and Source Features, 444 QC Element Occurrences, 32 VertNet; Expert Reviews - Sylvain Giguere, Christopher Edge, Damien Mullin, Patrick Moldowan, Jeffie McNeil, Ryan Wolfe, 4 Anonymous
Comments:	None Please see spatial data for Ecoshape-level reviewer comments.
Disclaimer:	Please review our methods document before using EBAR. EBAR range data are relatively coarse scale and appropriate for screening and education purposes, but are not intended for all types of applications and analysis. The absence of data in any geographic areas does not necessarily mean that a species is not present. An ecoshape with a presence value does not necessarily mean that a species is present throughout the entire geographic area.
Presence Definitions:	(Please see Comments above for any exceptions) Present - the species is found within the ecoshape based on species observation data, Element Occurrences, Source Features, Canadian Federal Critical Habitat, or expert opinion. Presence Expected - expert opinion the species may be present, or the ecoshape overlapped with a range estimate or a habitat suitability model. Historical - all species occurrence data within the ecoshape contains observation data greater than 40 years old or an Element Occurrence (EO) that was ranked as Extirpated or Historical (EO Rank of H, H?, X or X?).
Usage Type Definitions:	(Please see Comments above for any exceptions) Breeding - the species is thought to breed within the ecoshape based on eBird Breeding and Behaviour Codes or expert opinion. Possible Breeding - the species is probably or possibly breeding within the ecoshape based on eBird, BBA or jurisdiction Breeding and Behaviour Codes, or on expert opinion.
Map Projection:	North America Albers Equal Area Conic (WKID 4269)

Credits

Suggested Citation:	NatureServe Canada, 2020. Ecosystem-based Automated Range (EBAR) for <i>Glyptemys insculpta</i> , Version 1.0, Expert Reviewed (National) (Canadian Scope). Ottawa, Canada. Retrieved from [insert url] on [insert date]
License:	Ecosystem-based Automated Range (EBAR) Project, Copyright NatureServe Canada 2022 under CC BY 4.0 (creativecommons.org/licenses/by/4.0/)
Project Website:	www.natureserve.org/canada/ebar
Contact:	ebar-kba@natureserve.ca
Input References:	ACCDC Observations - Atlantic Canada Conservation Data Centre BISON - United States Geological Survey GBIF - Global Biodiversity Information Facility iDigBio - Integrated Digital Biocollection iNaturalist.ca (original coordinates for obscured records) - California Academy of Sciences and the National Geographic Society iNaturalist.org - California Academy of Sciences and the National Geographic Society ON Element Occurrences - Natural Heritage Information Centre, Ontario Ministry of Natural Resources and Forestry ON Observations and Source Features - Natural Heritage Information Centre, Ontario Ministry of Natural Resources and Forestry QC Element Occurrences - Centre de Données sur le Patrimoine Naturel du Québec VertNet - National Science Foundation
Reviewers by Taxa:	Reviewers by Taxa