

# *Plestiodon septentrionalis*

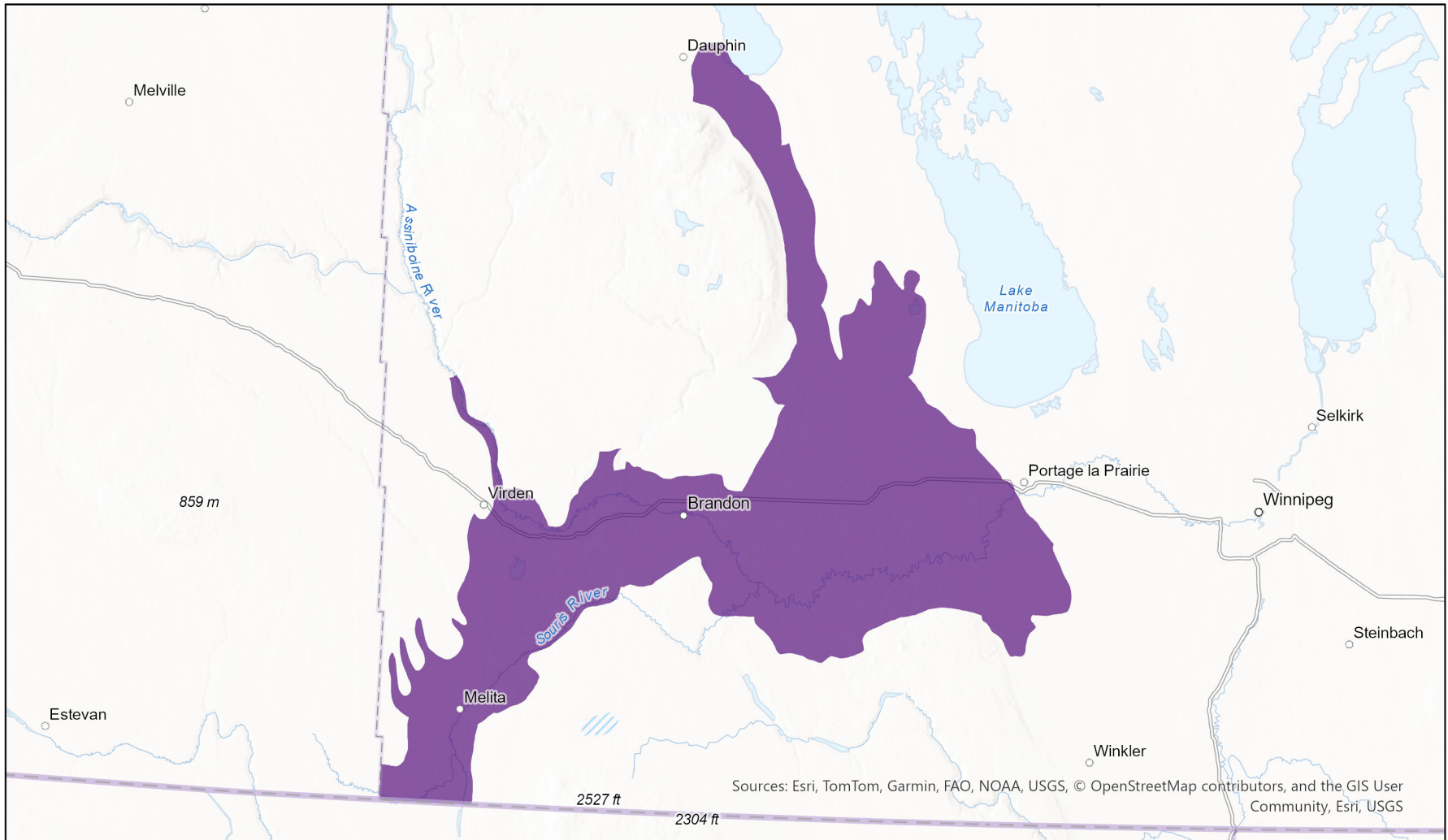


## Ecosystem-based Automated Range (EBAR)

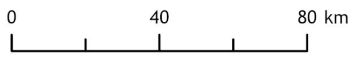
Date Generated: March 10, 2026; Version: 1.0; Stage: Expert Reviewed (National); Scope: Canadian

Synonyms Used: None

- Present
- Presence Expected
- Historical



Sources: Esri, TomTom, Garmin, FAO, NOAA, USGS, © OpenStreetMap contributors, and the GIS User Community, Esri, USGS



Input Records - 162 GBIF (1929-2024), 8 iNaturalist.ca (2019), 181 iNaturalist.ca (original coordinates for obscured records) (2007-2025), 25 iNaturalist.org (2013-2024), 60 MB Element Occurrences (1919-2023), 743 MB Source Feature Points (1965-2024), 60 MB Source Feature Polygons (1919-2024); Expert Reviews - Michelle Sawatzky

Map centre: 99.7666° W 50.1127° N  
© NatureServe Canada 2026 under CC BY 4.0

EBAR is relatively coarse scale data and not intended for all applications and analysis. Please see full disclaimer in metadata.

## Ecosystem-based Automated Range (EBAR) Metadata

---

### Species

National Scientific Name:	<i>Plestiodon septentrionalis</i> Baird, 1858
Scientific Name Reference:	Committee on the Status of Endangered Wildlife in Canada (COSEWIC). 2017. COSEWIC Assessment Results, November 2017. Online. Available: <a href="http://www.cosewic.ca/index.php/en-ca/assessment-process">http://www.cosewic.ca/index.php/en-ca/assessment-process</a> .
National English Name:	Prairie Skink
National French Name:	Scinque des prairies
Element National ID:	164587
Element Global ID:	100228 ( <a href="#">go to NatureServe Explorer</a> )
Element Code:	ARACH01100
Endemism Type:	N
Canadian COSEWIC Name:	
Canadian COSEWIC ID:	282
English COSEWIC Common Name:	Prairie Skink
French COSEWIC Common Name:	Scinque des prairies

## Rank/Status

<b>Global Rank:</b>	G5 (reviewed February 02, 2016)
<b>National Rank (Canada):</b>	N1 (reviewed 2024)
<b>Subnational Ranks (Canada):</b>	MB=S1
<b>National Rank (United States):</b>	N5 (reviewed 1996)
<b>Subnational Ranks (United States):</b>	AR=S2, IA=S3, KS=S4, LA=SNR, MN=S5, MO=S3, ND=S2S3, NE=S5, OK=SNR, SD=S5, TX=S2, WI=S3
<b>National Rank (Mexico):</b>	None
<b>Subnational Ranks (Mexico):</b>	None
<b>Canadian SARA Status:</b>	Special Concern/Préoccupante (July 14, 2005)
<b>Canadian COSEWIC Status:</b>	Special Concern
<b>US ESA Status:</b>	None

## Range Map

<b>Date Generated:</b>	March 10, 2026
<b>Version:</b>	1.0
<b>Stage:</b>	Expert Reviewed (National)
<b>Scope:</b>	Canadian
<b>Metadata:</b>	Primary Species - <i>Plestiodon septentrionalis</i> Baird, 1858; Secondary Species - <i>Plestiodon septentrionalis septentrionalis</i> Baird, 1858 Input Records - 162 GBIF (1929-2024), 8 iNaturalist.ca (2019), 181 iNaturalist.ca (original coordinates for obscured records) (2007-2025), 25 iNaturalist.org (2013-2024), 60 MB Element Occurrences (1919-2023), 743 MB Source Feature Points (1965-2024), 60 MB Source Feature Polygons (1919-2024); Expert Reviews - Michelle Sawatzky
<b>Comments:</b>	None <a href="#">Please see spatial data for Ecoshape-level reviewer comments.</a>
<b>Disclaimer:</b>	Please review our <a href="#">methods document</a> before using EBAR.  EBAR range data are relatively coarse scale and appropriate for screening and education purposes, but are not intended for all types of applications and analysis.  The absence of data in any geographic areas does not necessarily mean that a species is not present.  An ecoshape with a presence value does not necessarily mean that a species is present throughout the entire geographic area.
<b>Presence Definitions:</b>	(Please see Comments above for any exceptions)  Present - the species is found within the ecoshape based on species observation data, Element Occurrences, Source Features, Canadian Federal Critical Habitat, or expert opinion.  Presence Expected - expert opinion the species may be present, or the ecoshape overlapped with a range estimate or a habitat suitability model.  Historical - all species occurrence data within the ecoshape contains observation data greater than 40 years old or an Element Occurrence (EO) that was ranked as Extirpated or Historical (EO Rank of H, H?, X or X?), or expert opinion that the species is extirpated or historical.
<b>Usage Type Definitions:</b>	(Please see Comments above for any exceptions)  Breeding - the species is thought to breed within the ecoshape based on eBird Breeding and Behaviour Codes or expert opinion.  Possible Breeding - the species is probably or possibly breeding within the ecoshape based on eBird, BBA or jurisdiction Breeding and Behaviour Codes, or on expert opinion.
<b>Map Projection:</b>	North America Albers Equal Area Conic (WKID 4269)

## Credits

<b>Suggested Citation:</b>	NatureServe Canada, 2026. Ecosystem-based Automated Range (EBAR) for <i>Plestiodon septentrionalis</i> , Version 1.0, Expert Reviewed (National) (Canadian Scope). Ottawa, Canada. Retrieved from [insert url] on [insert date]
<b>License:</b>	Ecosystem-based Automated Range (EBAR) Project, Copyright NatureServe Canada 2026 under CC BY 4.0 ( <a href="https://creativecommons.org/licenses/by/4.0/">creativecommons.org/licenses/by/4.0/</a> )
<b>Project Website:</b>	<a href="http://www.natureserve.org/canada/ebar">www.natureserve.org/canada/ebar</a>
<b>Contact:</b>	<a href="mailto:ebar-kba@natureserve.ca">ebar-kba@natureserve.ca</a>
<b>Input References:</b>	GBIF - <a href="#">Global Biodiversity Information Facility</a> GBIF - <a href="https://doi.org/10.15468/dl.e3ax32">GBIF Occurrence Download https://doi.org/10.15468/dl.e3ax32</a> Accessed from R via <a href="#">rgbif</a> ( <a href="https://github.com/ropensci/rgbif">https://github.com/ropensci/rgbif</a> ) on 2024-06-21 iNaturalist.ca - <a href="#">California Academy of Sciences and the National Geographic Society</a> iNaturalist.ca (original coordinates for obscured records) - <a href="#">California Academy of Sciences and the National Geographic Society</a> iNaturalist.org - <a href="#">California Academy of Sciences and the National Geographic Society</a> MB Element Occurrences - Manitoba Conservation Data Centre MB Source Feature Points - Manitoba Conservation Data Centre MB Source Feature Polygons - Manitoba Conservation Data Centre
<b>Reviewers by Taxa:</b>	<a href="#">Reviewers by Taxa</a>